

Product datasheet for CR561973

Tissue Total RNA, Lymphoid tissue

Product data:

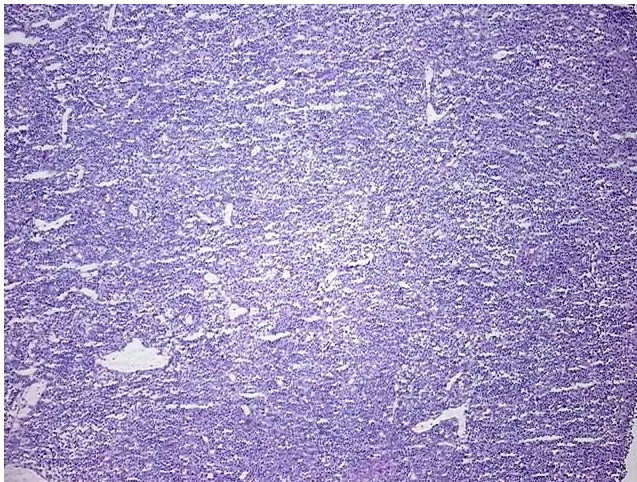
Product Type:	Total RNA
Disease State:	Cancer
Diagnosis Category:	Lymphoma
Tissue:	Lymphoid tissue
Frozen Sample ID:	FR0003790A
Case ID:	CU0000013999
Prep:	1
Vial ID:	RN00002C7D
Tissue of Origin:	Lymphoid tissue
Site of Finding:	Lymph node
Appearance:	Tumor
Sample Diagnosis (from Pathology Verification):	Lymphoma, peripheral T-cell
Normal:	0%
Lesional:	0%
Tumor:	90%
Tumor Hypo/Acellular Stroma:	5%
Tumor Hypercellular Stroma:	5%
Necrosis:	0%
Pathology Verification notes from H&E review:	Flow cytometry studies are suggestive of adult T cell leukemia/lymphoma (HTLV-1) associated lymphoma
Bioanalyzer Ratio (28S/18S):	1.48



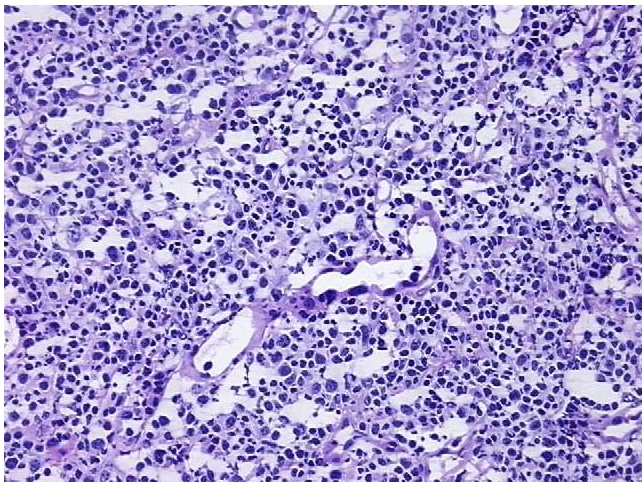
[View online »](#)

CASE Diagnosis (from medical center path report):	Lymphoma, peripheral T-cell
Age:	71
Gender:	Male
Tumor Grade:	Not Reported
Minimum Stage Grouping:	I
T (Extent of Primary Tumor):	Not applicable
N (Lymph node metastasis):	Not applicable
M (Distant metastasis):	Not applicable
Diagnostic Test Results:	CD3 ~ Leu4 ~ UCHT1 ! by IHC,Positive; CD7 ~ Leu9 ! by FC,Positive; CD4 ~ Leu3a ! by IHC,Positive; CD7 ~ Leu9 ! by IHC,Positive; CD25 ~ Tac ! by IHC,Positive; CD20 ~ B1 ~ Leu16 ! by IHC,Positive, focal
Storage:	Store tissue total RNA at -80°C.
Stability:	These products are stable for one year from date of shipping when stored at -80°C without repeated freeze/thaws.

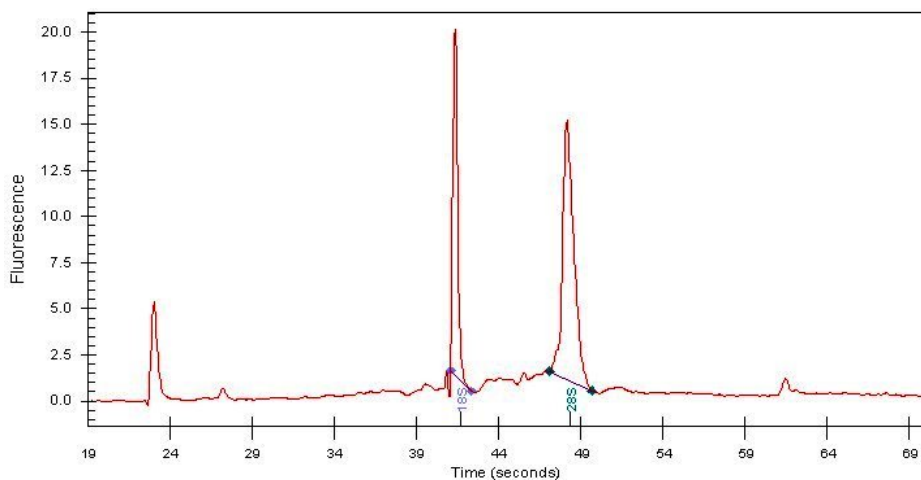
Product images:



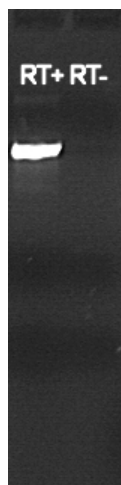
4x Image



20x Image



RNA Electropherogram Image



RNA RT-PCR Image