

## Product datasheet for CR561968

### Tissue Total RNA, Lung: right middle lobe

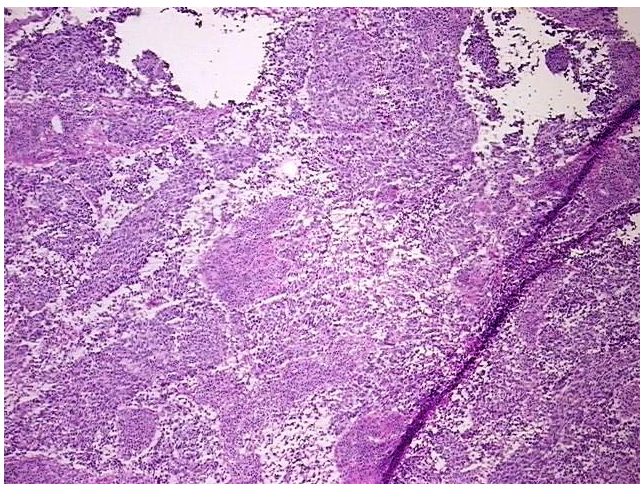
#### Product data:

Product Type:	Total RNA
Disease State:	Cancer
Diagnosis Category:	Lung Cancer
Tissue:	Lung
Frozen Sample ID:	FR5B3466D7
Case ID:	CU0000014767
Prep:	1
Vial ID:	RN00002FBB
Tissue of Origin:	Lung: right middle lobe
Site of Finding:	Lymph node
Appearance:	Tumor
Sample Diagnosis (from Pathology Verification):	Carcinoma of lung, small cell, metastatic
Normal:	0%
Lesional:	0%
Tumor:	50%
Tumor Hypo/Acellular Stroma:	5%
Tumor Hypercellular Stroma:	5%
Necrosis:	40%
Bioanalyzer Ratio (28S/18S):	1.51
CASE Diagnosis (from medical center path report):	Carcinoma of lung, small cell
Age:	63

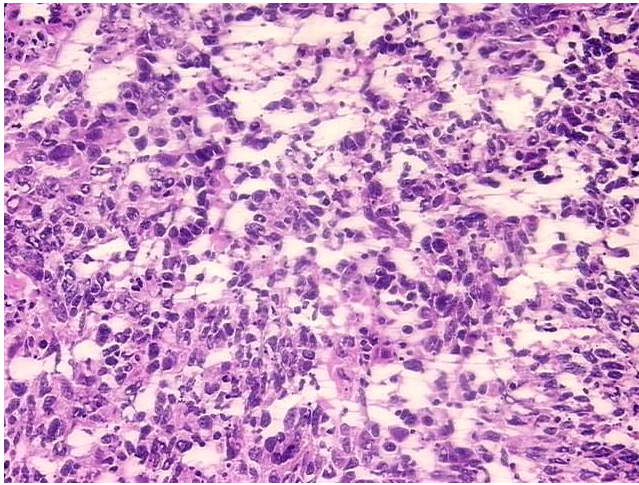

[View online »](#)

<b>Gender:</b>	Male
<b>Tumor Grade:</b>	AJCC G3: Poorly differentiated
<b>Minimum Stage Grouping:</b>	IIA
<b>T (Extent of Primary Tumor):</b>	T1
<b>N (Lymph node metastasis):</b>	N1
<b>M (Distant metastasis):</b>	MX
<b>Diagnostic Test Results:</b>	Neuron specific enolase ~ NSE ! by IHC,Positive; Synaptophysin ~ SYN ! by IHC,Positive, focal; Chromogranin A ~ Parathyroid secretory protein 1 ! by IHC,Positive, focal; Cytokeratin AE1/AE3 ~ AE1/AE3 ! by IHC,Positive; Thyroid transcription factor
<b>Storage:</b>	Store tissue total RNA at -80°C.
<b>Stability:</b>	These products are stable for one year from date of shipping when stored at -80°C without repeated freeze/thaws.

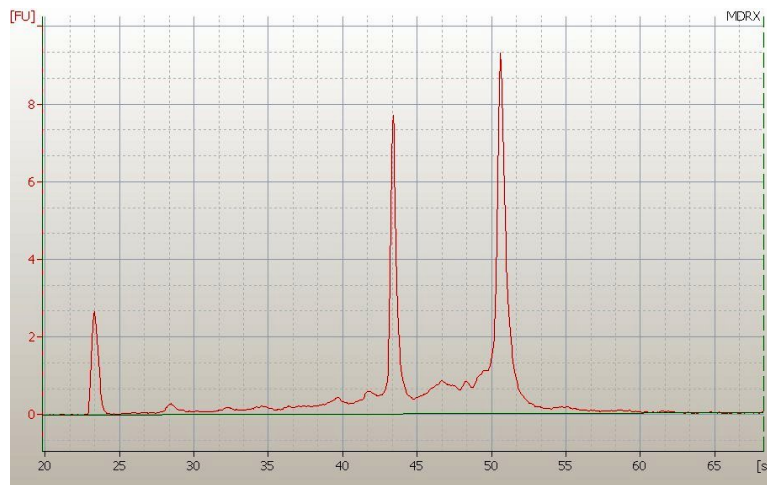
### Product images:



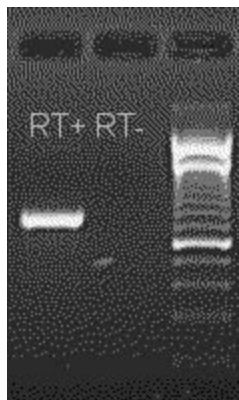
4x Image



20x Image



RNA Electropherogram Image



RNA RT-PCR Image