

## Product datasheet for CR561962

### Tissue Total RNA, Lung

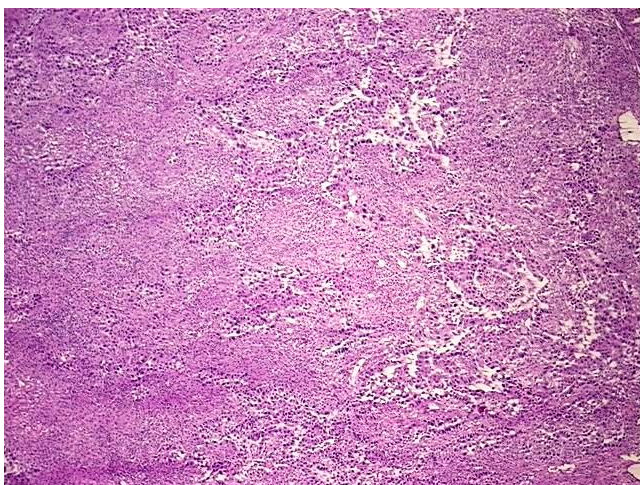
#### Product data:

Product Type:	Total RNA
Disease State:	Cancer
Diagnosis Category:	Lung Cancer
Tissue:	Lung
Frozen Sample ID:	FR00041014
Case ID:	CU0000014809
Prep:	1
Vial ID:	RN000038D3
Tissue of Origin:	Lung
Site of Finding:	Lymph node
Appearance:	Tumor
Sample Diagnosis (from Pathology Verification):	Carcinoma of lung, non-small cell, metastatic
Normal:	0%
Lesional:	0%
Tumor:	80%
Tumor Hypo/Acellular Stroma:	10%
Tumor Hypercellular Stroma:	10%
Necrosis:	0%
Bioanalyzer Ratio (28S/18S):	2
CASE Diagnosis (from medical center path report):	Carcinoma of lung, non-small cell, metastatic
Age:	63

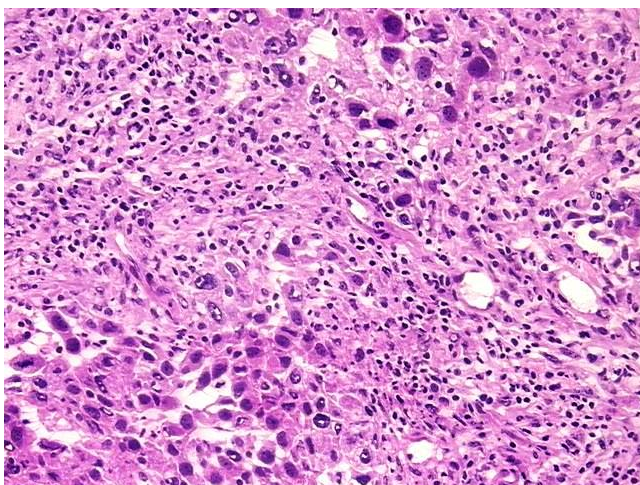


[View online »](#)

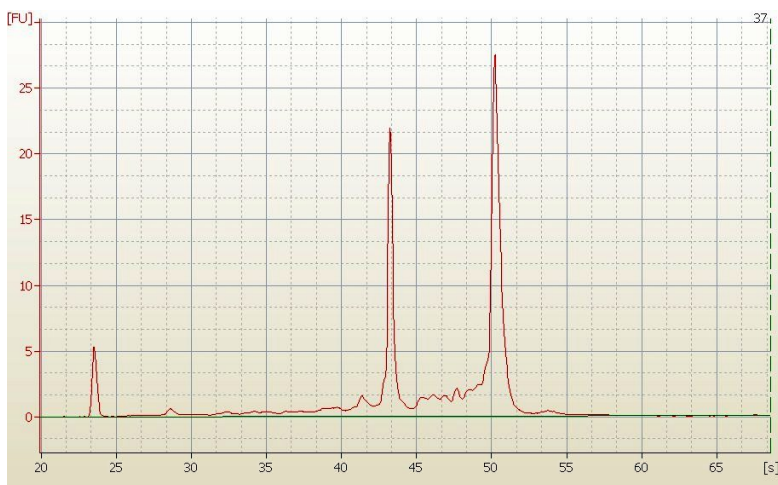
Gender:	Male
Tumor Grade:	AJCC G3: Poorly differentiated
Minimum Stage Grouping:	IIIB
T (Extent of Primary Tumor):	TX
N (Lymph node metastasis):	N3
M (Distant metastasis):	MX
Storage:	Store tissue total RNA at -80°C.
Stability:	These products are stable for one year from date of shipping when stored at -80°C without repeated freeze/thaws.

**Product images:**

4x Image



20x Image



RNA Electropherogram Image



RNA RT-PCR Image