

Product datasheet for CR561954

Tissue Total RNA, Soft tissue

Product data:

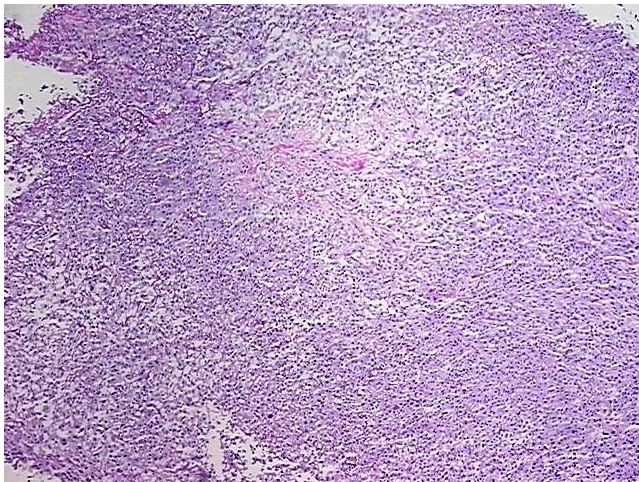
Product Type:	Total RNA
Disease State:	Cancer
Diagnosis Category:	Sarcoma
Tissue:	Soft tissue
Frozen Sample ID:	FR00038036
Case ID:	CU0000014034
Prep:	1
Vial ID:	RN00003B9A
Tissue of Origin:	Soft tissue
Site of Finding:	Thigh
Appearance:	Tumor
Sample Diagnosis (from Pathology Verification):	Sarcoma, pleomorphic
Normal:	0%
Lesional:	0%
Tumor:	90%
Tumor Hypo/Acellular Stroma:	5%
Tumor Hypercellular Stroma:	5%
Necrosis:	0%
Pathology Verification notes from H&E review:	Tumor: with myoid differentiation
Bioanalyzer Ratio (28S/18S):	1.95



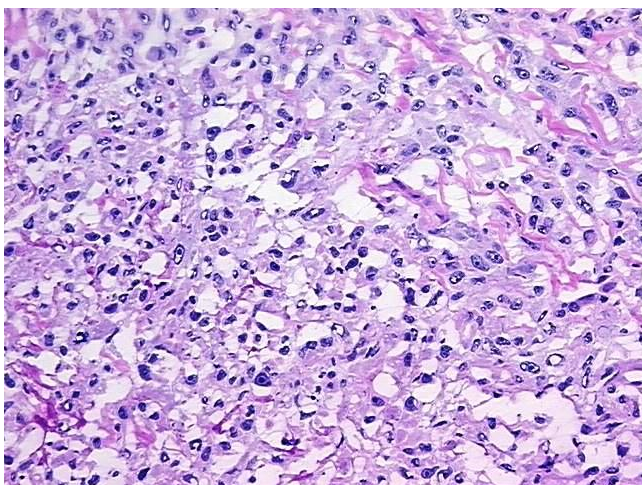
[View online »](#)

CASE Diagnosis (from medical center path report):	Sarcoma, pleomorphic
Age:	66
Gender:	Female
Tumor Grade:	AJCC G3: Poorly differentiated
Minimum Stage Grouping:	IV
T (Extent of Primary Tumor):	T2b
N (Lymph node metastasis):	NX
M (Distant metastasis):	M1
Diagnostic Test Results:	Caldesmon (h),Negative; Calponin,Negative; MART-1 ~ Melanoma Marker ~ Melan-A,Negative; Smooth muscle actin ~ SMA ~ Alpha-SMA ! by IHC,Positive; S100 protein,Negative; HMB45 melanoma antigen ~ GP100 ! by IHC,Negative; Desmin ! by IHC,Negative; C
Storage:	Store tissue total RNA at -80°C.
Stability:	These products are stable for one year from date of shipping when stored at -80°C without repeated freeze/thaws.

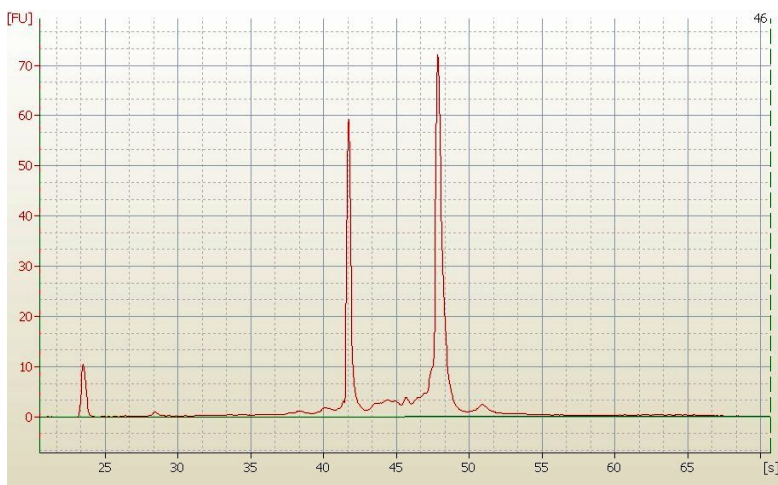
Product images:



4x Image



20x Image



RNA Electropherogram Image



RNA RT-PCR Image