

## Product datasheet for **CR561930**

### Tissue Total RNA, Ovary: left

#### Product data:

Product Type:	Total RNA
Disease State:	Cancer
Diagnosis Category:	Ovarian Cancer
Tissue:	Ovary
Frozen Sample ID:	FR00047311
Case ID:	CU0000018841
Prep:	1
Vial ID:	RN000039C0
Tissue of Origin:	Ovary: left
Site of Finding:	Ovary: left
Appearance:	Tumor
Sample Diagnosis (from Pathology Verification):	Adenocarcinoma of ovary, papillary serous
Normal:	0%
Lesional:	0%
Tumor:	70%
Tumor Hypo/Acellular Stroma:	30%
Tumor Hypercellular Stroma:	0%
Necrosis:	0%
Pathology Verification notes from H&E review:	Tumor Stroma (Cellular): Desmoplastic reaction
Bioanalyzer Ratio (28S/18S):	1.58


[View online »](#)

**CASE Diagnosis (from medical center path report):** Carcinoma of ovary, papillary serous

**Age:** 64

**Gender:** Female

**Tumor Grade:** FIGO G2: Moderately differentiated

**Minimum Stage** IIIB

**Grouping:**

**T (Extent of Primary Tumor):** T3b

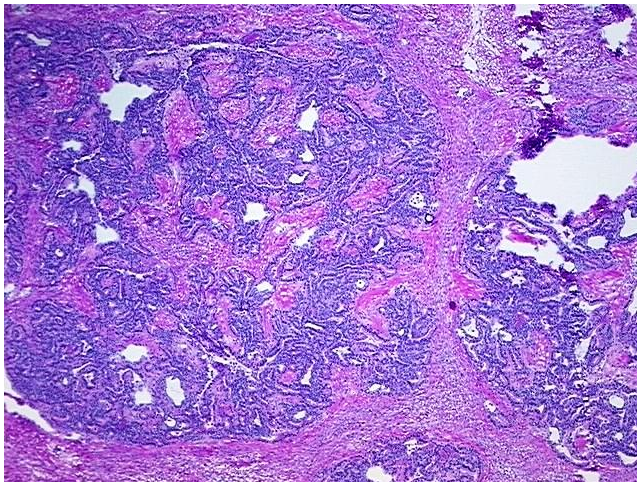
**N (Lymph node metastasis):** NX

**M (Distant metastasis):** MX

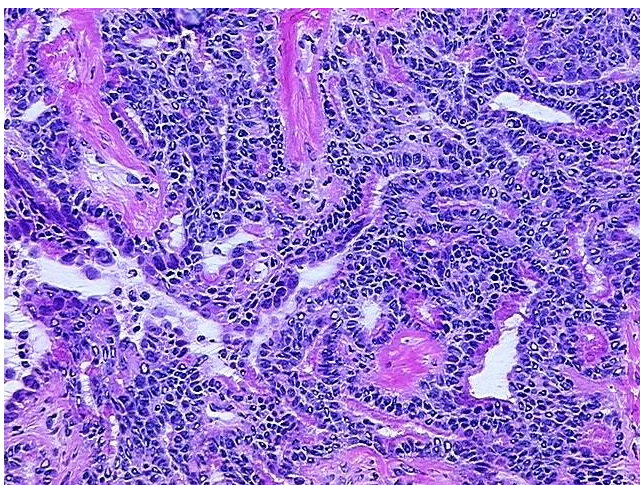
**Storage:** Store tissue total RNA at -80°C.

**Stability:** These products are stable for one year from date of shipping when stored at -80°C without repeated freeze/thaws.

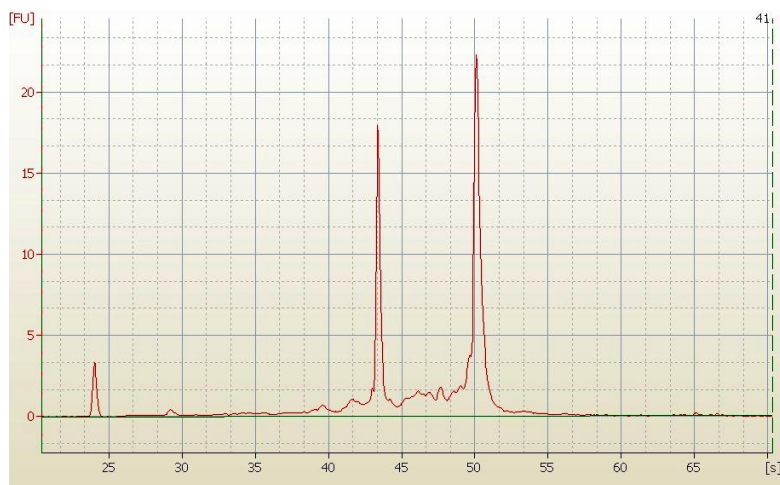
## Product images:



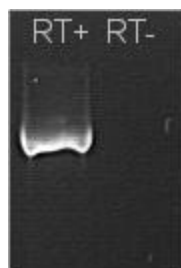
4x Image



20x Image



RNA Electropherogram Image



RNA RT-PCR Image