

Product datasheet for CR561926

Tissue Total RNA, Breast, left

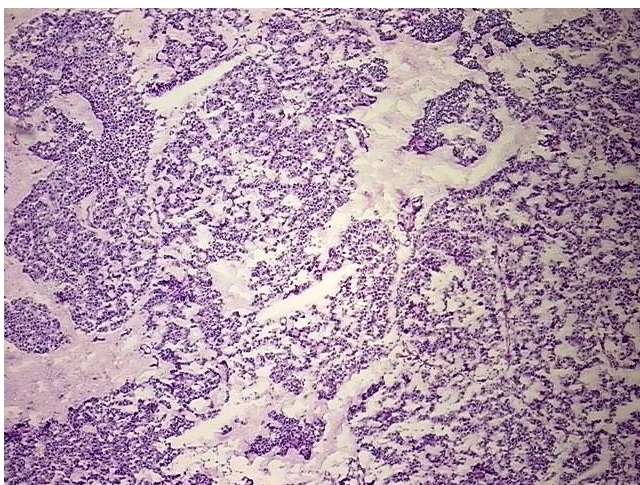
Product data:

Product Type:	Total RNA
Disease State:	Cancer
Diagnosis Category:	Breast Cancer
Tissue:	Breast
Frozen Sample ID:	SX0000285C
Case ID:	CX0000000182
Prep:	1
Vial ID:	RN000031FC
Tissue of Origin:	Breast, left
Site of Finding:	Breast, left
Appearance:	Tumor
Sample Diagnosis (from Pathology Verification):	Adenocarcinoma of breast, ductal, mucinous
Normal:	0%
Lesional:	0%
Tumor:	85%
Tumor Hypo/Acellular Stroma:	5%
Tumor Hypercellular Stroma:	10%
Necrosis:	0%
Bioanalyzer Ratio (28S/18S):	1.55
CASE Diagnosis (from medical center path report):	Adenocarcinoma of breast, ductal, mucinous
Age:	86

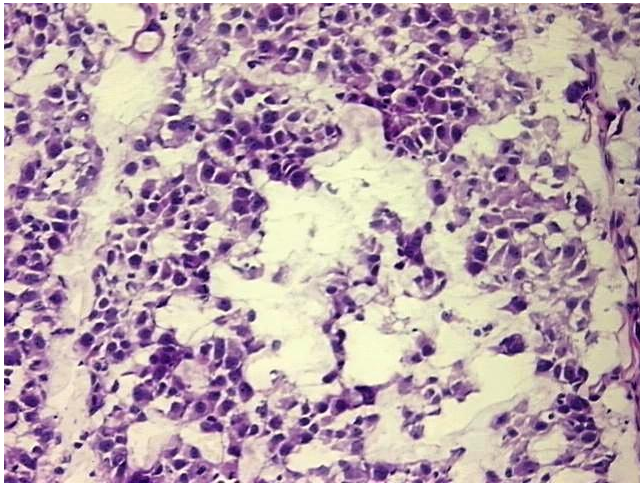


[View online »](#)

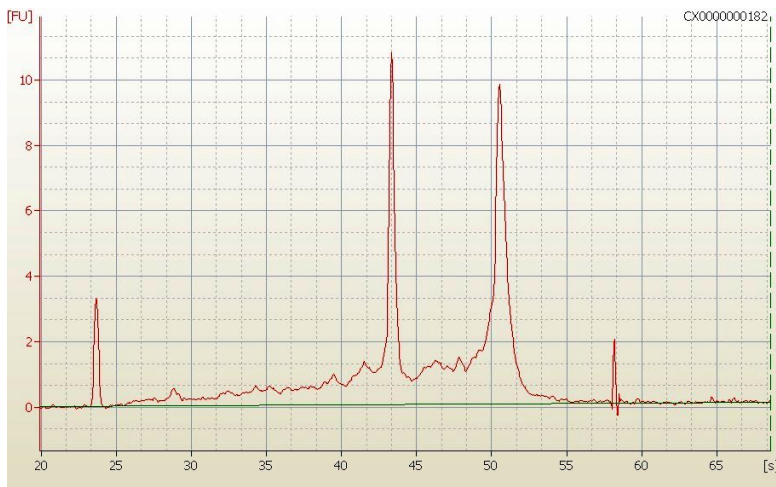
Gender:	Female
Tumor Grade:	Nottingham G2: 6-7 points Intermediate combined grade (moderately favorable)
Minimum Stage Grouping:	IIIB
T (Extent of Primary Tumor):	T4b
N (Lymph node metastasis):	NX
M (Distant metastasis):	MX
Storage:	Store tissue total RNA at -80°C.
Stability:	These products are stable for one year from date of shipping when stored at -80°C without repeated freeze/thaws.

Product images:

4x Image



20x Image



RNA Electropherogram Image



RNA RT-PCR Image