

Product datasheet for CR561915

Tissue Total RNA, Breast, left

Product data:

Product Type:	Total RNA
Disease State:	Cancer
Diagnosis Category:	Breast Cancer
Tissue:	Breast
Frozen Sample ID:	SX0000269B
Case ID:	CX0000000343
Prep:	1
Vial ID:	RN000037CD
Tissue of Origin:	Breast, left
Site of Finding:	Breast, left
Appearance:	Tumor
Sample Diagnosis (from Pathology Verification):	Adenocarcinoma of breast, ductal
Normal:	40%
Lesional:	0%
Tumor:	55%
Tumor Hypo/Acellular Stroma:	0%
Tumor Hypercellular Stroma:	5%
Necrosis:	0%
Pathology Verification notes from H&E review:	Non Tumor Structures: 100% Adipose tissue
Bioanalyzer Ratio (28S/18S):	1.09



[View online »](#)

CASE Diagnosis (from medical center path report): Adenocarcinoma of breast, ductal

Age: 54

Gender: Female

Tumor Grade: Nottingham G3: 8-9 points High combined grade (unfavorable)

Minimum Stage Grouping: IIIA

T (Extent of Primary Tumor): T1c

N (Lymph node metastasis): N2a

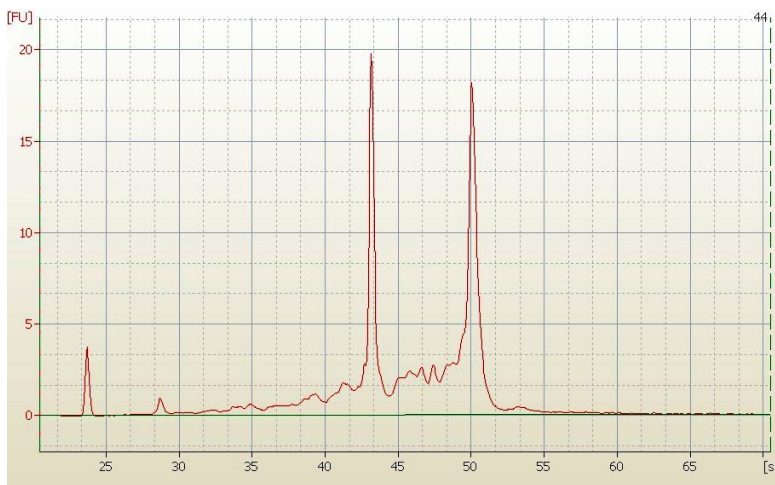
M (Distant metastasis): MX

Diagnostic Test Results: Progesterone receptor ~ PR ! by IHC,Positive; Estrogen receptor ~ ER ! by IHC,Positive; HER2 ~ ERBB2 ~ Neu ! by IHC,Positive

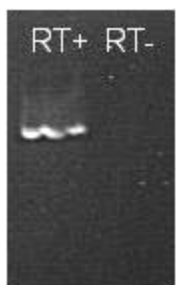
Storage: Store tissue total RNA at -80°C.

Stability: These products are stable for one year from date of shipping when stored at -80°C without repeated freeze/thaws.

Product images:



RNA Electropherogram Image



RNA RT-PCR Image