

Product datasheet for CR561914

Tissue Total RNA, Lymphoid tissue

Product data:

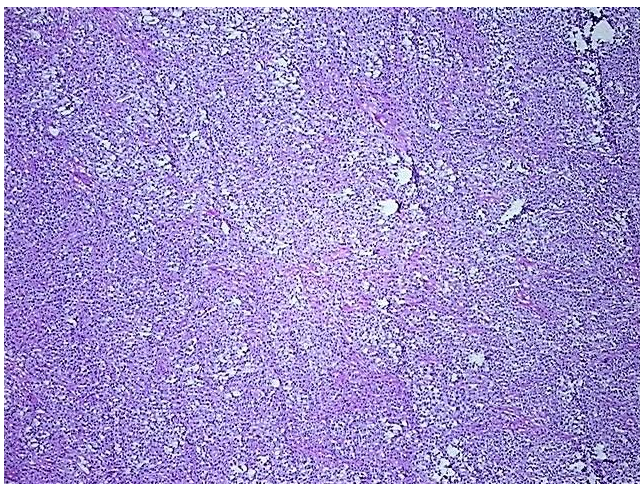
Product Type:	Total RNA
Disease State:	Cancer
Diagnosis Category:	Lymphoma
Tissue:	Lymphoid tissue
Frozen Sample ID:	SX000026E9
Case ID:	CX0000000347
Prep:	1
Vial ID:	RN00003A80
Tissue of Origin:	Lymphoid tissue
Site of Finding:	Lung: left lower lobe
Appearance:	Tumor
Sample Diagnosis (from Pathology Verification):	Lymphoma, large B-cell, diffuse
Normal:	0%
Lesional:	0%
Tumor:	85%
Tumor Hypo/Acellular Stroma:	0%
Tumor Hypercellular Stroma:	10%
Necrosis:	5%
Pathology Verification notes from H&E review:	Viable tumor area: 6 mm x 5 mm
Bioanalyzer Ratio (28S/18S):	1.3



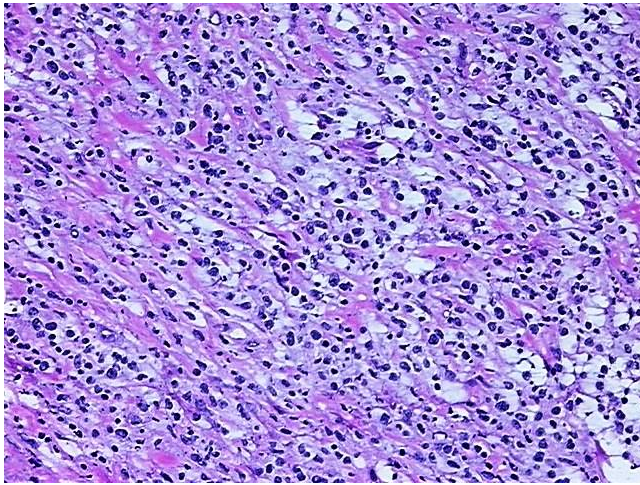
[View online »](#)

CASE Diagnosis (from medical center path report):	Lymphoma, large B-cell, diffuse
Gender:	Female
Tumor Grade:	Not Reported
Minimum Stage Grouping:	II
T (Extent of Primary Tumor):	Not applicable
N (Lymph node metastasis):	Not applicable
M (Distant metastasis):	Not applicable
Storage:	Store tissue total RNA at -80°C.
Stability:	These products are stable for one year from date of shipping when stored at -80°C without repeated freeze/thaws.

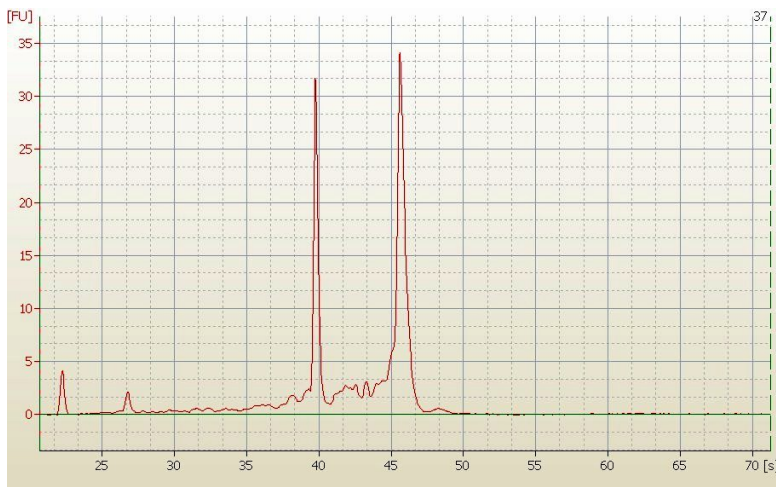
Product images:



4x Image



20x Image



RNA Electropherogram Image



RNA RT-PCR Image