

## Product datasheet for CR561913

### Tissue Total RNA, Lymphoid tissue

#### Product data:

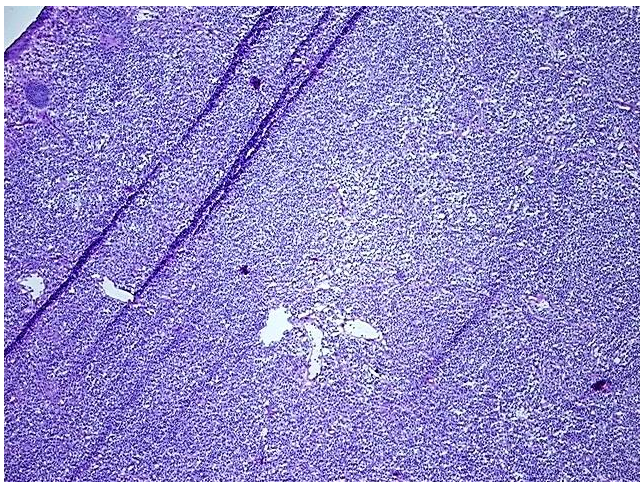
Product Type:	Total RNA
Disease State:	Cancer
Diagnosis Category:	Lymphoma
Tissue:	Lymphoid tissue
Frozen Sample ID:	SX000026EF
Case ID:	CX0000000423
Prep:	1
Vial ID:	RN00003A81
Tissue of Origin:	Lymphoid tissue
Site of Finding:	Colon: transverse
Appearance:	Tumor
Sample Diagnosis (from Pathology Verification):	Lymphoma, mantle cell
Normal:	4%
Lesional:	0%
Tumor:	95%
Tumor Hypo/Acellular Stroma:	0%
Tumor Hypercellular Stroma:	1%
Necrosis:	0%
Pathology Verification notes from H&E review:	Tumor area: 7 mm x 3 mm
Bioanalyzer Ratio (28S/18S):	1.14



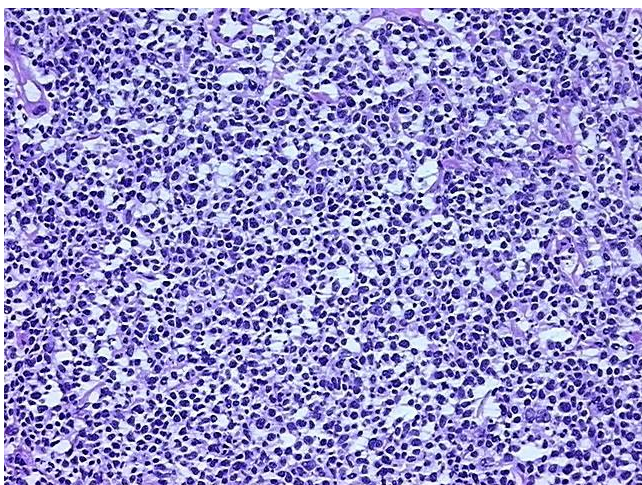
[View online »](#)

CASE Diagnosis (from medical center path report):	Lymphoma, mantle cell
Age:	67
Gender:	Male
Tumor Grade:	Not Reported
Minimum Stage Grouping:	IIE
T (Extent of Primary Tumor):	Not applicable
N (Lymph node metastasis):	Not applicable
M (Distant metastasis):	Not applicable
Diagnostic Test Results:	CD3 ~ Leu4 ~ UCHT1 ! by IHC,Negative; CD5 ~ Leu1 ! by IHC,Negative; Cyclin D1 ~ BCL1 ! by IHC,Positive; CD10 ~ CALLA ~ Common ALL antigen ! by IHC,Negative; CD20 ~ B1 ~ Leu16 ! by IHC,Positive
Storage:	Store tissue total RNA at -80°C.
Stability:	These products are stable for one year from date of shipping when stored at -80°C without repeated freeze/thaws.

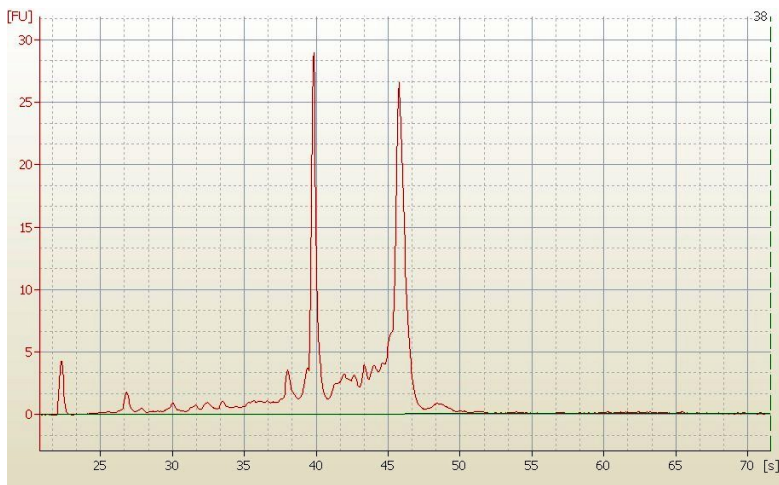
### Product images:



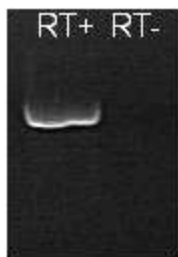
4x Image



20x Image



RNA Electropherogram Image



RNA RT-PCR Image