

Product datasheet for CR561903

Tissue Total RNA, Breast

Product data:

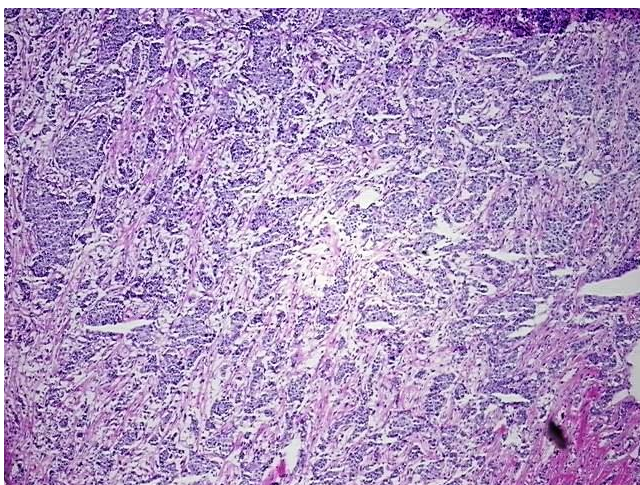
| | |
|---|----------------------------------|
| Product Type: | Total RNA |
| Disease State: | Cancer |
| Diagnosis Category: | Breast Cancer |
| Tissue: | Breast |
| Frozen Sample ID: | FR00034AB8 |
| Case ID: | CU0000013993 |
| Prep: | 1 |
| Vial ID: | RN00001B80 |
| Tissue of Origin: | Breast |
| Site of Finding: | Breast |
| Appearance: | Tumor |
| Sample Diagnosis (from Pathology Verification): | Adenocarcinoma of breast, ductal |
| Normal: | 10% |
| Lesional: | 0% |
| Tumor: | 75% |
| Tumor Hypo/Acellular Stroma: | 15% |
| Tumor Hypercellular Stroma: | 0% |
| Necrosis: | 0% |
| Bioanalyzer Ratio (28S/18S): | 1.22 |
| CASE Diagnosis (from medical center path report): | Adenocarcinoma of breast, ductal |
| Age: | 62 |



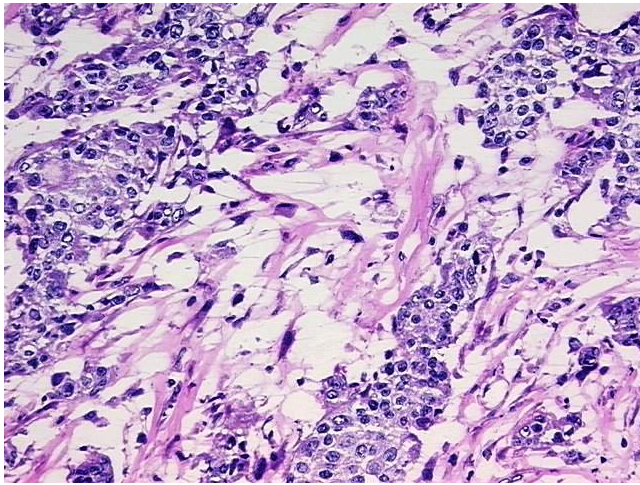
[View online »](#)

| | |
|------------------------------|--|
| Gender: | Female |
| Tumor Grade: | Nottingham G2: 6-7 points Intermediate combined grade (moderately favorable) |
| Minimum Stage Grouping: | IIA |
| T (Extent of Primary Tumor): | T2 |
| N (Lymph node metastasis): | N0 (i-) |
| M (Distant metastasis): | MX |
| Diagnostic Test Results: | HER2 ~ ERBB2 ~ Neu ! by IHC,Positive, strong; Cytokeratin AE1/AE3 ~ AE1/AE3 ! by IHC,Negative |
| Storage: | Store tissue total RNA at -80°C. |
| Stability: | These products are stable for one year from date of shipping when stored at -80°C without repeated freeze/thaws. |

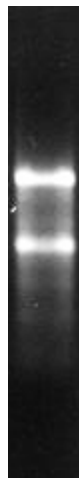
Product images:



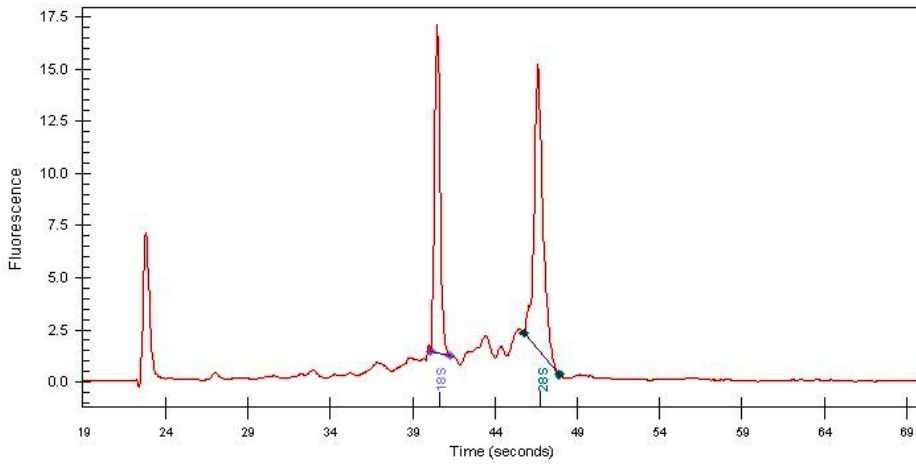
4x Image



20x Image



RNA Gel Image



RNA Electropherogram Image



RNA RT-PCR Image