

Product datasheet for CR561873

Tissue Total RNA, Kidney

Product data:

Product Type:	Total RNA
Disease State:	Cancer
Diagnosis Category:	Renal Cell Carcinoma
Tissue:	Kidney
Frozen Sample ID:	FR5B33F59D
Case ID:	CU0000012611
Prep:	2
Vial ID:	RN00001B82
Tissue of Origin:	Kidney
Site of Finding:	Kidney
Appearance:	Tumor
Sample Diagnosis (from Pathology Verification):	Carcinoma of kidney, renal cell, clear cell
Normal:	0%
Lesional:	0%
Tumor:	95%
Tumor Hypo/Acellular Stroma:	3%
Tumor Hypercellular Stroma:	2%
Necrosis:	0%
Pathology Verification notes from H&E review:	Tumor Stroma (Hypo/Acellular): Fibrosis
Bioanalyzer Ratio (28S/18S):	1.27



[View online »](#)

CASE Diagnosis (from medical center path report): Carcinoma of kidney, renal cell, clear cell

Age: 67

Gender: Male

Tumor Grade: Fuhrman G2: Nuclei slightly irregular

Minimum Stage Grouping: I

T (Extent of Primary Tumor): T1b

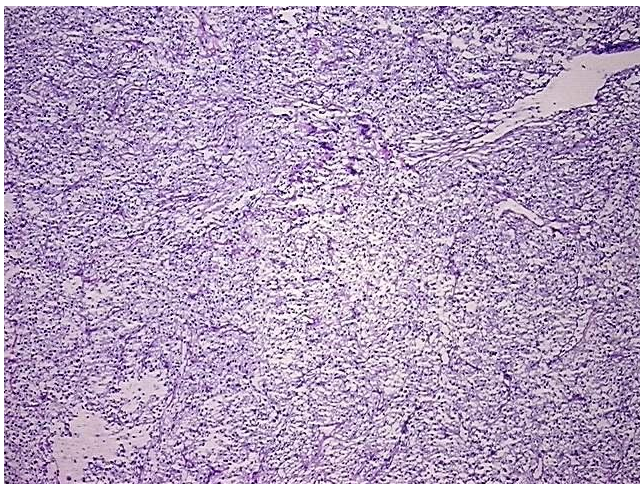
N (Lymph node metastasis): NX

M (Distant metastasis): MX

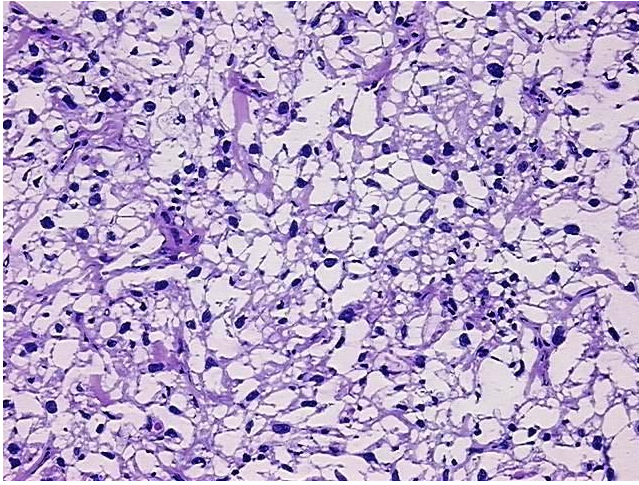
Storage: Store tissue total RNA at -80°C.

Stability: These products are stable for one year from date of shipping when stored at -80°C without repeated freeze/thaws.

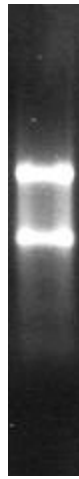
Product images:



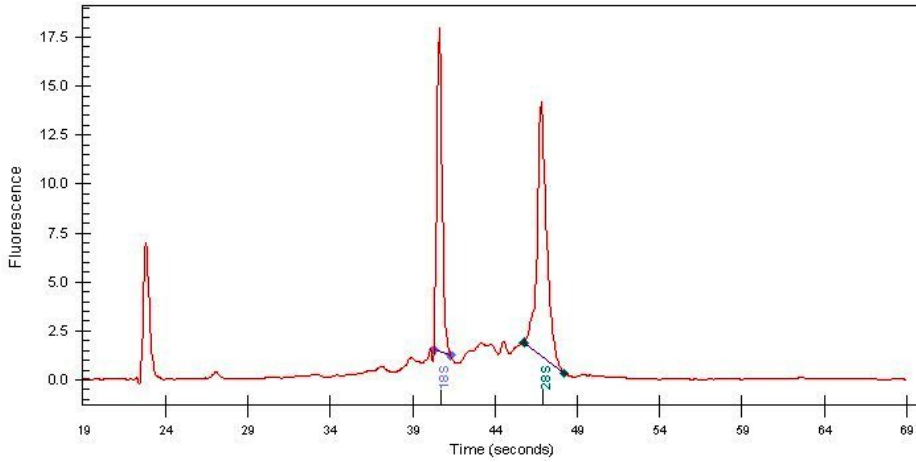
4x Image



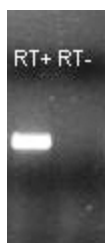
20x Image



RNA Gel Image



RNA Electropherogram Image



RNA RT-PCR Image