

## Product datasheet for **CR561862**

### Tissue Total RNA, Liver

#### Product data:

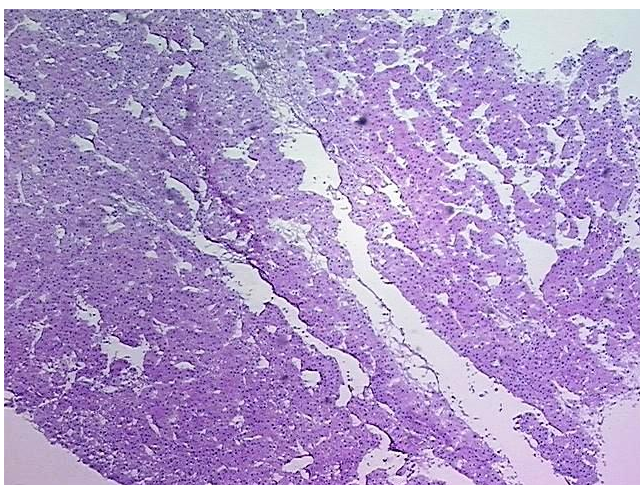
Product Type:	Total RNA
Disease State:	Cancer
Diagnosis Category:	Liver Cancer
Tissue:	Liver
Frozen Sample ID:	FR65EE24F1
Case ID:	CU0000011777
Prep:	2
Vial ID:	RN00002448
Tissue of Origin:	Liver
Site of Finding:	Liver
Appearance:	Tumor
Sample Diagnosis (from Pathology Verification):	Carcinoma of liver, hepatocellular
Normal:	0%
Lesional:	0%
Tumor:	85%
Tumor Hypo/Acellular Stroma:	5%
Tumor Hypercellular Stroma:	0%
Necrosis:	10%
Pathology Verification notes from H&E review:	Tumor: Moderately differentiated hepatocellular carcinoma arising in a background of chronic hepatitis
Bioanalyzer Ratio (28S/18S):	1.33



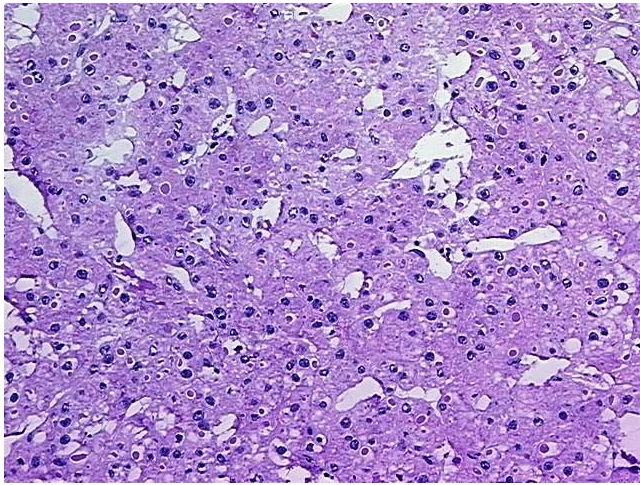
[View online »](#)

CASE Diagnosis (from medical center path report):	Carcinoma of liver, hepatocellular
Age:	58
Gender:	Female
Tumor Grade:	Not Reported
Minimum Stage Grouping:	I
T (Extent of Primary Tumor):	T1
N (Lymph node metastasis):	NX
M (Distant metastasis):	MX
Storage:	Store tissue total RNA at -80°C.
Stability:	These products are stable for one year from date of shipping when stored at -80°C without repeated freeze/thaws.

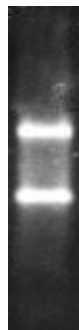
### Product images:



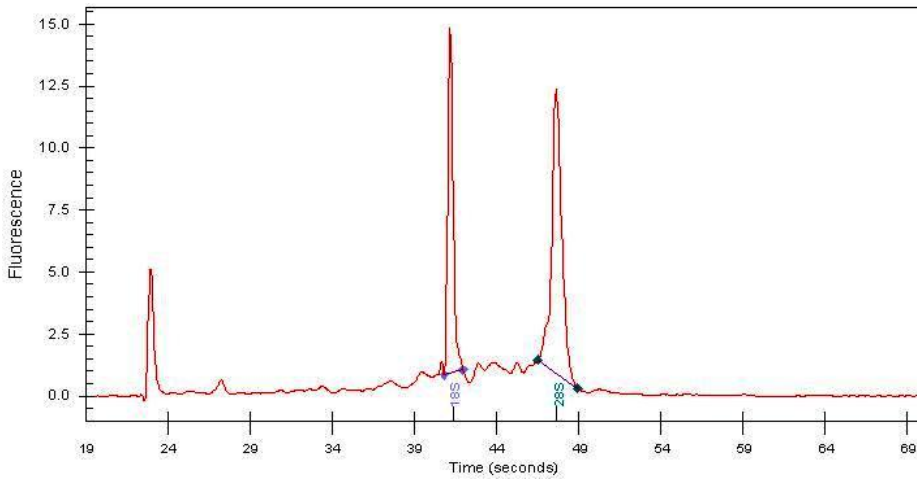
4x Image



20x Image



RNA Gel Image



RNA Electropherogram Image



RNA RT-PCR Image