

Product datasheet for CR561859

Tissue Total RNA, Esophagus

Product data:

Product Type:	Total RNA
Disease State:	Cancer
Diagnosis Category:	Esophageal/Gastroesophageal Cancer
Tissue:	Esophagus
Frozen Sample ID:	FR5B33D5BD
Case ID:	CU0000011781
Prep:	1
Vial ID:	RN000024A8
Tissue of Origin:	Esophagus
Site of Finding:	Stomach
Appearance:	Tumor
Sample Diagnosis (from Pathology Verification):	Carcinoma of esophagus, squamous cell
Normal:	0%
Lesional:	0%
Tumor:	70%
Tumor Hypo/Acellular Stroma:	20%
Tumor Hypercellular Stroma:	0%
Necrosis:	10%
Pathology Verification notes from H&E review:	Tumor: direct extension; Tumor Stroma (Cellular): Inflammatory cells
Bioanalyzer Ratio (28S/18S):	2.03



[View online »](#)

CASE Diagnosis (from medical center path report): Carcinoma of esophagus, squamous cell

Age: 79

Gender: Male

Tumor Grade: AJCC G2: Moderately differentiated

Minimum Stage III

Grouping:

T (Extent of Primary Tumor): T3

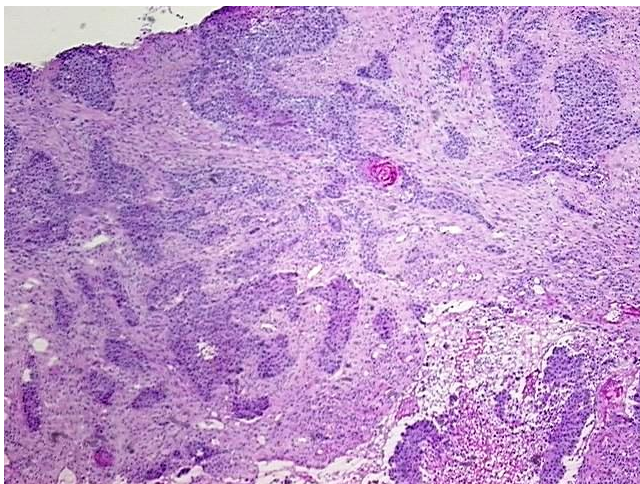
N (Lymph node metastasis): N1

M (Distant metastasis): MX

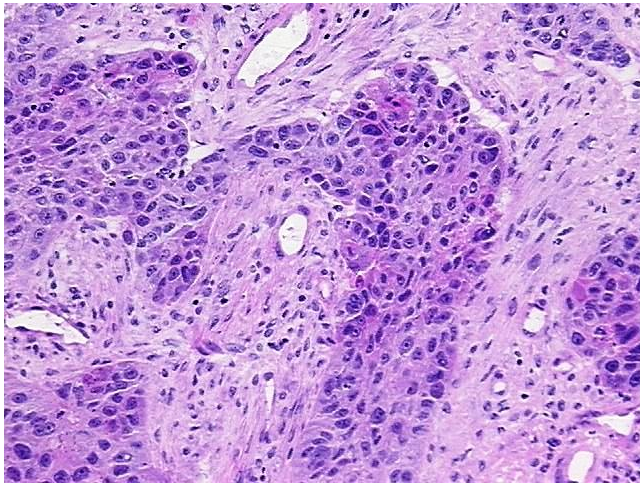
Storage: Store tissue total RNA at -80°C.

Stability: These products are stable for one year from date of shipping when stored at -80°C without repeated freeze/thaws.

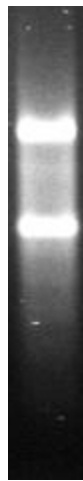
Product images:



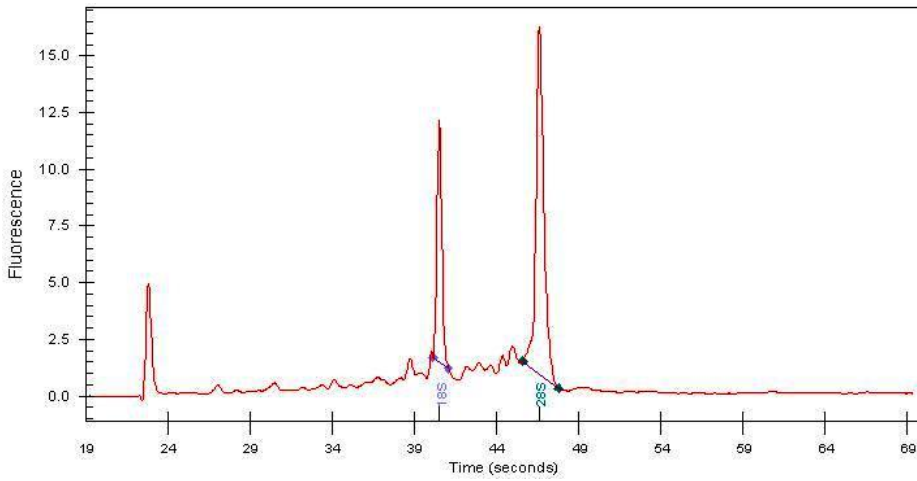
4x Image



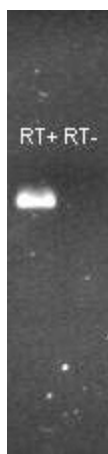
20x Image



RNA Gel Image



RNA Electropherogram Image



RNA RT-PCR Image