

Product datasheet for **CR561843**

Tissue Total RNA, Breast

Product data:

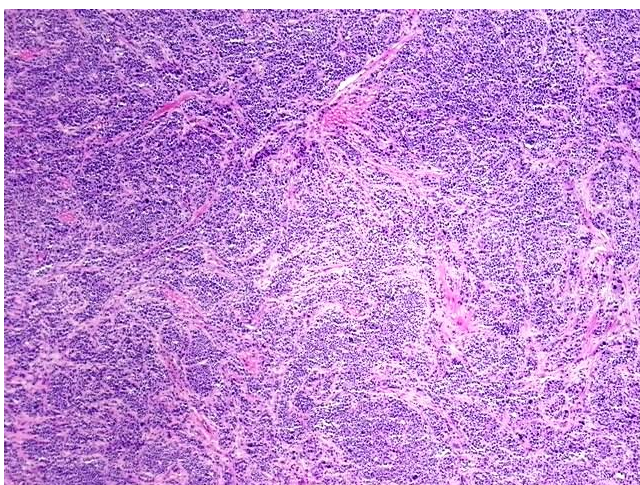
| | |
|---|---|
| Product Type: | Total RNA |
| Disease State: | Cancer |
| Diagnosis Category: | Breast Cancer |
| Tissue: | Breast |
| Frozen Sample ID: | FR0002E3D7 |
| Case ID: | CU0000011469 |
| Prep: | 1 |
| Vial ID: | RN00001BC7 |
| Tissue of Origin: | Breast |
| Site of Finding: | Chest wall |
| Appearance: | Tumor |
| Sample Diagnosis (from Pathology Verification): | Adenocarcinoma, metastatic, consistent with breast primary |
| Normal: | 10% |
| Lesional: | 0% |
| Tumor: | 80% |
| Tumor Hypo/Acellular Stroma: | 5% |
| Tumor Hypercellular Stroma: | 5% |
| Necrosis: | 0% |
| Pathology Verification notes from H&E review: | Tumor Stroma (Cellular): Desmoplastic reaction; Tumor Stroma (Hypo/Acellular): Fibrosis |
| Bioanalyzer Ratio (28S/18S): | 1.45 |



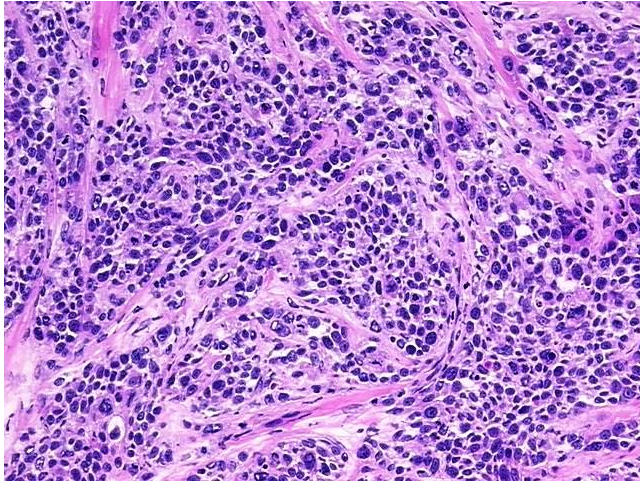
[View online »](#)

| | |
|--|--|
| CASE Diagnosis (from medical center path report): | Adenocarcinoma, metastatic, consistent with breast primary |
| Age: | 45 |
| Gender: | Female |
| Tumor Grade: | Not Reported |
| Minimum Stage Grouping: | IV |
| T (Extent of Primary Tumor): | TX |
| N (Lymph node metastasis): | NX |
| M (Distant metastasis): | M1 |
| Storage: | Store tissue total RNA at -80°C. |
| Stability: | These products are stable for one year from date of shipping when stored at -80°C without repeated freeze/thaws. |

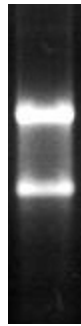
Product images:



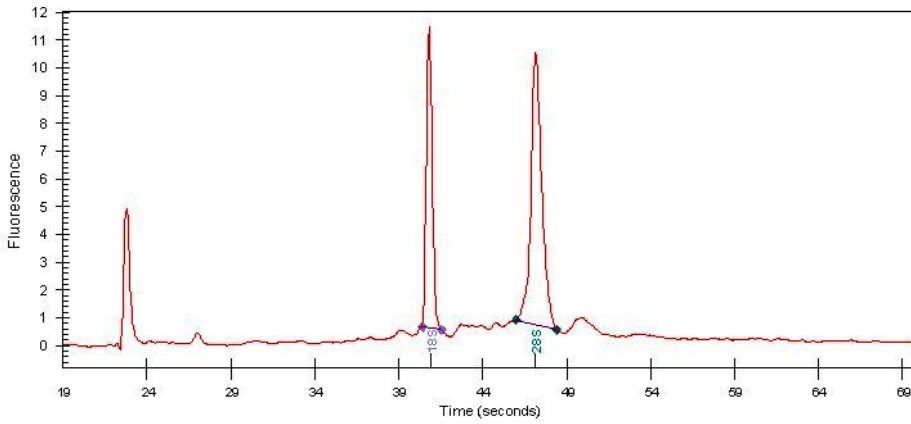
4x Image



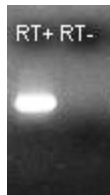
20x Image



RNA Gel Image



RNA Electropherogram Image



RNA RT-PCR Image