

## Product datasheet for **CR561834**

### Tissue Total RNA, Lymphoid tissue

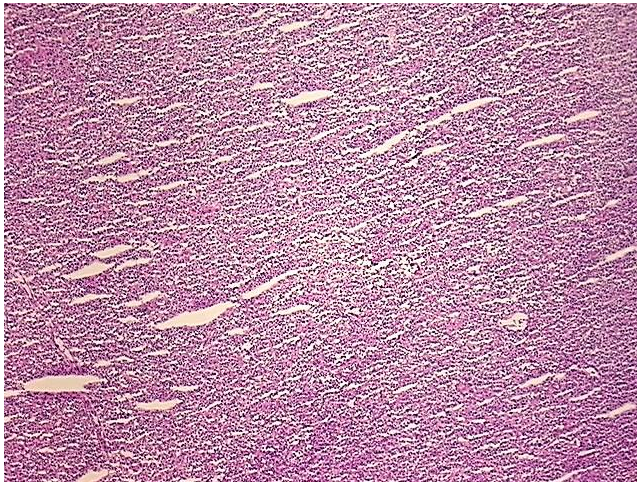
#### Product data:

Product Type:	Total RNA
Disease State:	Cancer
Diagnosis Category:	Lymphoma
Tissue:	Lymphoid tissue
Frozen Sample ID:	FR0002E9FB
Case ID:	CU0000011519
Prep:	1
Vial ID:	RN000016E6
Tissue of Origin:	Lymphoid tissue
Site of Finding:	Lymph node
Appearance:	Tumor
Sample Diagnosis (from Pathology Verification):	Lymphoma, large B-cell, diffuse
Normal:	25%
Lesional:	0%
Tumor:	70%
Tumor Hypo/Acellular Stroma:	0%
Tumor Hypercellular Stroma:	5%
Necrosis:	0%
Bioanalyzer Ratio (28S/18S):	1.52
CASE Diagnosis (from medical center path report):	Lymphoma, large B-cell, diffuse
Age:	68

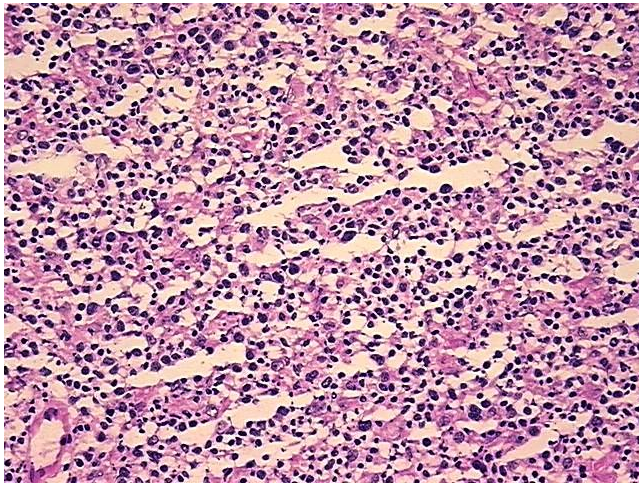

[View online »](#)

<b>Gender:</b>	Female
<b>Tumor Grade:</b>	Not Reported
<b>Minimum Stage Grouping:</b>	I
<b>T (Extent of Primary Tumor):</b>	Not applicable
<b>N (Lymph node metastasis):</b>	Not applicable
<b>M (Distant metastasis):</b>	Not applicable
<b>Diagnostic Test Results:</b>	CD3 ~ Leu4 ~ UCHT1 ! by IHC,Positive in non-tumor cells; CD45RO ~ A6 ~ UCHL1 ! by IHC,Positive; Lambda light chain ! by IHC,Positive; BCL6 oncoprotein ! by IHC,Positive; CD5 ~ Leu1 ! by IHC,Negative; CD10 ~ CALLA ~ Common ALL antigen ! by IH
<b>Storage:</b>	Store tissue total RNA at -80°C.
<b>Stability:</b>	These products are stable for one year from date of shipping when stored at -80°C without repeated freeze/thaws.

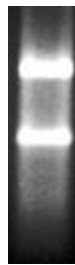
### Product images:



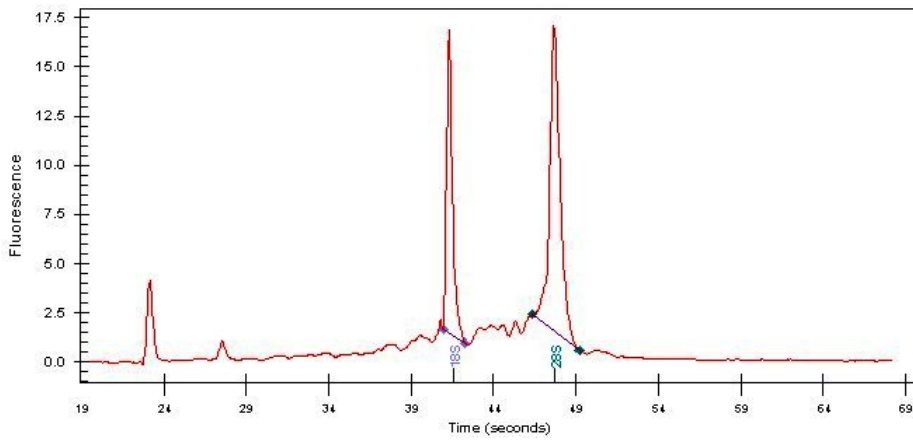
4x Image



20x Image



RNA Gel Image



RNA Electropherogram Image



RNA RT-PCR Image