

Product datasheet for CR561824

Tissue Total RNA, Breast

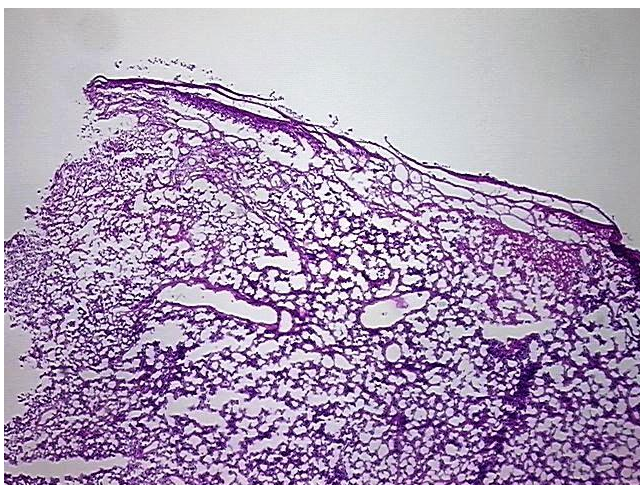
Product data:

Product Type:	Total RNA
Disease State:	Cancer
Diagnosis Category:	Breast Cancer
Tissue:	Breast
Frozen Sample ID:	FR0002E7A6
Case ID:	CU0000011502
Prep:	1
Vial ID:	RN00001A5B
Tissue of Origin:	Breast
Site of Finding:	Brain
Appearance:	Tumor
Sample Diagnosis (from Pathology Verification):	Adenocarcinoma of breast, metastatic
Normal:	0%
Lesional:	0%
Tumor:	95%
Tumor Hypo/Acellular Stroma:	3%
Tumor Hypercellular Stroma:	0%
Necrosis:	2%
Bioanalyzer Ratio (28S/18S):	1.47
CASE Diagnosis (from medical center path report):	Adenocarcinoma of breast, metastatic
Age:	46

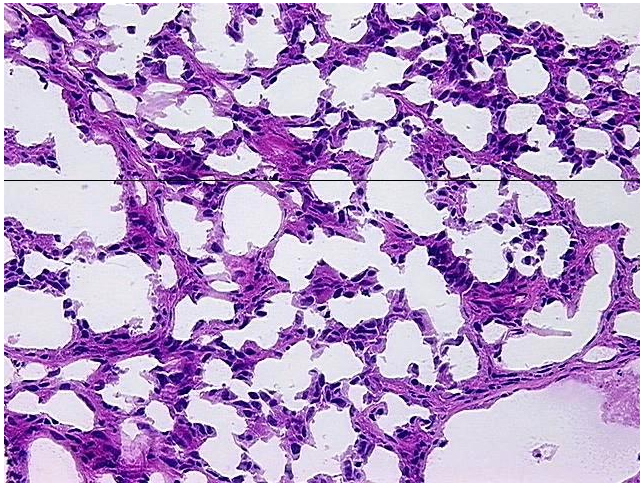


[View online »](#)

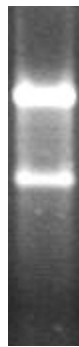
Gender:	Female
Tumor Grade:	See pathology report
Minimum Stage Grouping:	IV
T (Extent of Primary Tumor):	TX
N (Lymph node metastasis):	NX
M (Distant metastasis):	M1
Storage:	Store tissue total RNA at -80°C.
Stability:	These products are stable for one year from date of shipping when stored at -80°C without repeated freeze/thaws.

Product images:

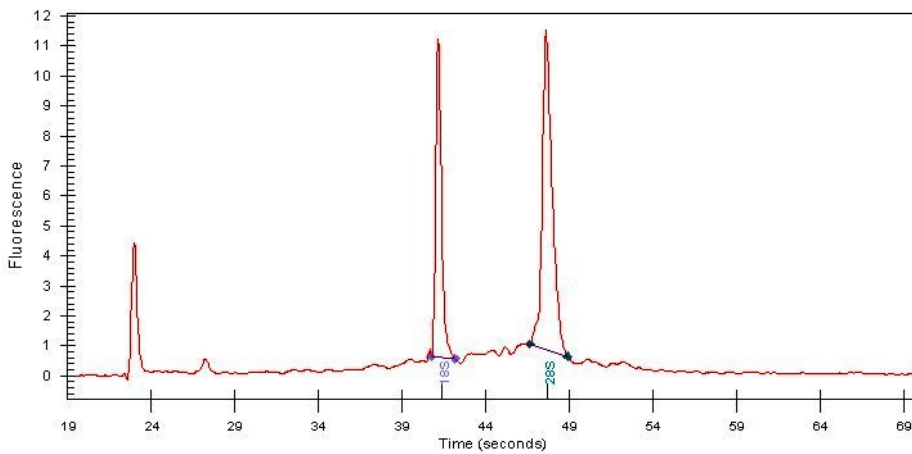
4x Image



20x Image



RNA Gel Image



RNA Electropherogram Image



RNA RT-PCR Image