

Product datasheet for CR561810

Tissue Total RNA, Breast

Product data:

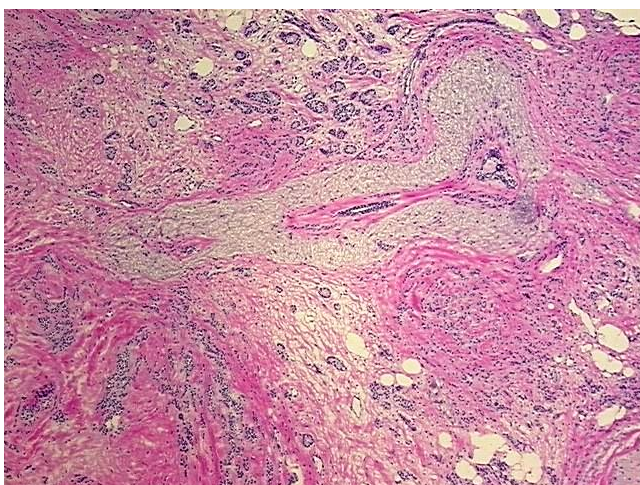
Product Type:	Total RNA
Disease State:	Cancer
Diagnosis Category:	Breast Cancer
Tissue:	Breast
Frozen Sample ID:	FR00036C01
Case ID:	CU0000012837
Prep:	1
Vial ID:	RN000031F7
Tissue of Origin:	Breast
Site of Finding:	Breast
Appearance:	Tumor
Sample Diagnosis (from Pathology Verification):	Adenocarcinoma of breast, ductal
Normal:	15%
Lesional:	0%
Tumor:	60%
Tumor Hypo/Acellular Stroma:	0%
Tumor Hypercellular Stroma:	25%
Necrosis:	0%
Pathology Verification notes from H&E review:	Tumor: An immunohistochemical stain for E-Cadherin reveals diffuse membrane positivity, a feature more suggestive of an infiltrating ductal carcinoma than an infiltrating lobular carcinoma.
Bioanalyzer Ratio (28S/18S):	1.49



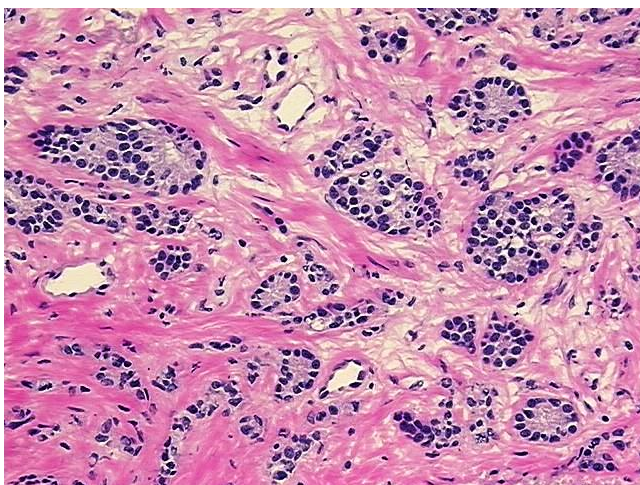
[View online »](#)

CASE Diagnosis (from medical center path report):	Adenocarcinoma of breast, ductal
Age:	78
Gender:	Female
Tumor Grade:	Nottingham G1: 3-5 points Low combined grade (favorable)
Minimum Stage Grouping:	I
T (Extent of Primary Tumor):	T1c
N (Lymph node metastasis):	N0 (i-)
M (Distant metastasis):	MX
Diagnostic Test Results:	E-Cadherin ~ Uvomorulin ~ Cadherin-E ! by IHC,Positive; Cytokeratin (Pan) ~ Keratin, Pan ! by IHC,Negative
Storage:	Store tissue total RNA at -80°C.
Stability:	These products are stable for one year from date of shipping when stored at -80°C without repeated freeze/thaws.

Product images:



4x Image



20x Image