

Product datasheet for CR561806

Tissue Total RNA, Soft tissue

Product data:

Product Type:	Total RNA
Disease State:	Cancer
Diagnosis Category:	Sarcoma
Tissue:	Soft tissue
Frozen Sample ID:	FR5B3399BA
Case ID:	CU0000013960
Prep:	1
Vial ID:	RN0000326C
Tissue of Origin:	Soft tissue
Site of Finding:	Leg
Appearance:	Tumor
Sample Diagnosis (from Pathology Verification):	Sarcoma, synovial
Normal:	0%
Lesional:	0%
Tumor:	85%
Tumor Hypo/Acellular Stroma:	15%
Tumor Hypercellular Stroma:	0%
Necrosis:	0%
Bioanalyzer Ratio (28S/18S):	0.94
CASE Diagnosis (from medical center path report):	Sarcoma, synovial
Age:	41

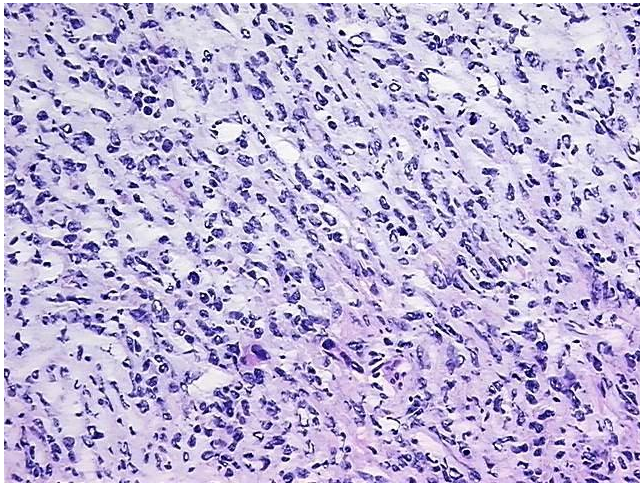


[View online »](#)

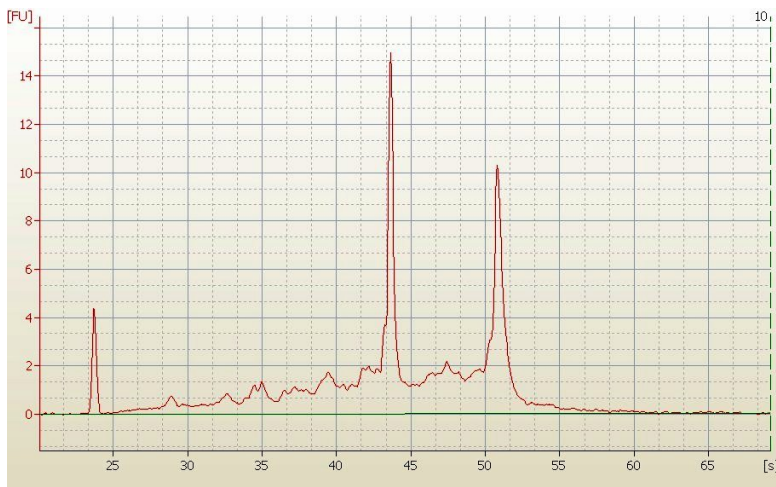
Gender:	Male
Tumor Grade:	Not Reported
Minimum Stage Grouping:	I
T (Extent of Primary Tumor):	T1b
N (Lymph node metastasis):	NX
M (Distant metastasis):	MX
Storage:	Store tissue total RNA at -80°C.
Stability:	These products are stable for one year from date of shipping when stored at -80°C without repeated freeze/thaws.

Product images:

4x Image



20x Image



RNA Electropherogram Image



RNA RT-PCR Image