

Product datasheet for CR561800

Tissue Total RNA, Kidney

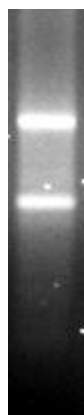
Product data:

Product Type:	Total RNA
Disease State:	Cancer
Diagnosis Category:	Renal Cell Carcinoma
Tissue:	Kidney
Frozen Sample ID:	FR00034A83
Case ID:	CU0000013992
Prep:	1
Vial ID:	RN000019A2
Tissue of Origin:	Kidney
Site of Finding:	Kidney
Appearance:	Tumor
Sample Diagnosis (from Pathology Verification):	Carcinoma of kidney, renal cell
Normal:	0%
Lesional:	0%
Tumor:	95%
Tumor Hypo/Acellular Stroma:	0%
Tumor Hypercellular Stroma:	5%
Necrosis:	0%
Pathology Verification notes from H&E review:	Tumor Stroma (Hypo/Acellular): Fibrosis; Inflammation: Mild Lymphoid infiltrate
Bioanalyzer Ratio (28S/18S):	1.26

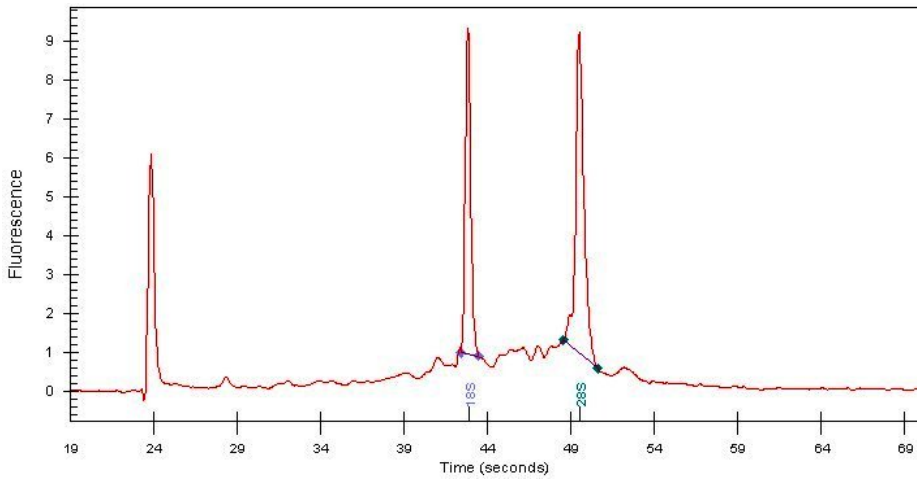


[View online »](#)

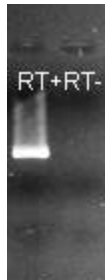
CASE Diagnosis (from medical center path report):	Carcinoma of kidney, renal cell
Age:	59
Gender:	Male
Tumor Grade:	Fuhrman G1: Nuclei round, uniform
Minimum Stage Grouping:	I
T (Extent of Primary Tumor):	T1a
N (Lymph node metastasis):	NX
M (Distant metastasis):	MX
Storage:	Store tissue total RNA at -80°C.
Stability:	These products are stable for one year from date of shipping when stored at -80°C without repeated freeze/thaws.

Product images:

RNA Gel Image



RNA Electropherogram Image



RNA RT-PCR Image