

## Product datasheet for CR561786

### Tissue Total RNA, Thyroid gland

#### Product data:

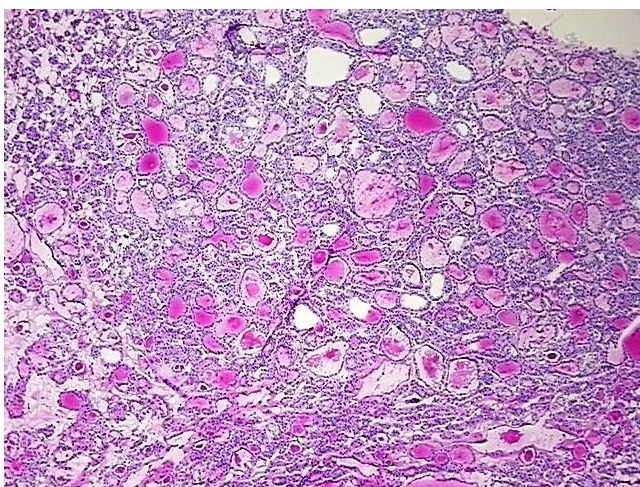
Product Type:	Total RNA
Disease State:	Cancer
Diagnosis Category:	Thyroid Cancer
Tissue:	Thyroid gland
Frozen Sample ID:	FR000309BB
Case ID:	CU0000012201
Prep:	1
Vial ID:	RN00002C1D
Tissue of Origin:	Thyroid gland
Site of Finding:	Thyroid gland
Appearance:	Tumor
Sample Diagnosis (from Pathology Verification):	Carcinoma of thyroid, papillary, follicular variant
Normal:	0%
Lesional:	0%
Tumor:	80%
Tumor Hypo/Acellular Stroma:	0%
Tumor Hypercellular Stroma:	20%
Necrosis:	0%
Pathology Verification notes from H&E review:	Tumor Stroma (Hypo/Acellular): Fibrosis, Edema fluid
Bioanalyzer Ratio (28S/18S):	1.58



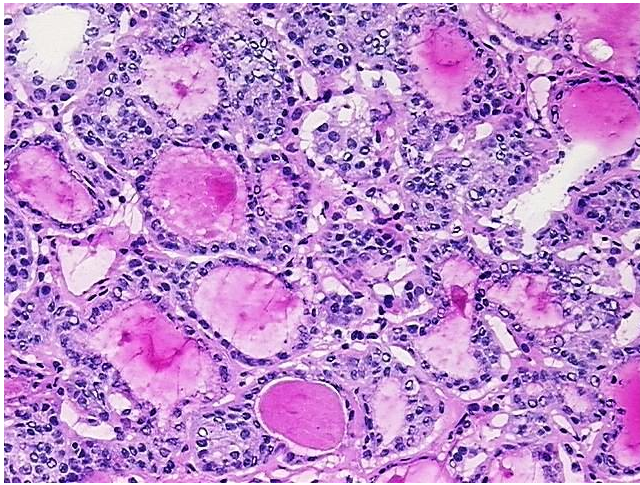
[View online »](#)

CASE Diagnosis (from medical center path report):	Carcinoma of thyroid, papillary, follicular variant
Age:	48
Gender:	Female
Tumor Grade:	Not Reported
Minimum Stage Grouping:	I
T (Extent of Primary Tumor):	T1
N (Lymph node metastasis):	N0
M (Distant metastasis):	MX
Storage:	Store tissue total RNA at -80°C.
Stability:	These products are stable for one year from date of shipping when stored at -80°C without repeated freeze/thaws.

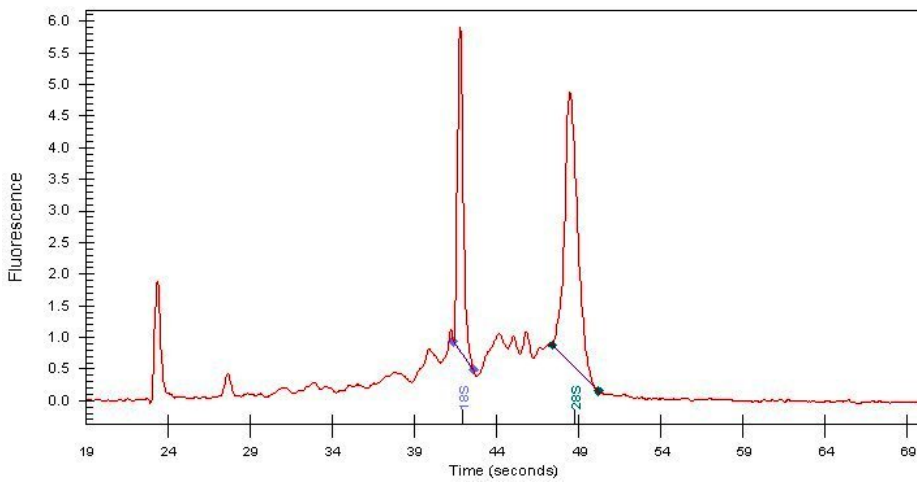
### Product images:



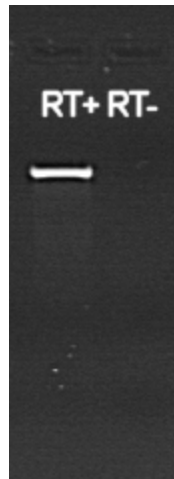
4x Image



20x Image



RNA Electropherogram Image



RNA RT-PCR Image