

## Product datasheet for CR561743

### Tissue Total RNA, Liver

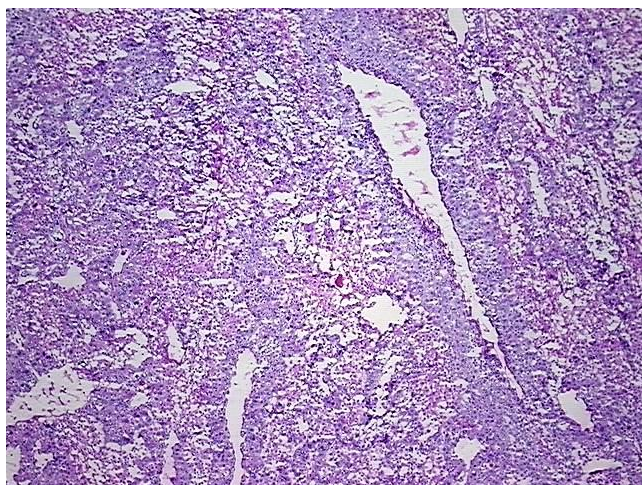
#### Product data:

Product Type:	Total RNA
Disease State:	Cancer
Diagnosis Category:	Liver Cancer
Tissue:	Liver
Frozen Sample ID:	FR00026FE3
Case ID:	CU0000005407
Prep:	1
Vial ID:	RN00000F2D
Tissue of Origin:	Liver
Site of Finding:	Liver
Appearance:	Tumor
Sample Diagnosis (from Pathology Verification):	Carcinoma of liver, hepatocellular
Normal:	0%
Lesional:	0%
Tumor:	50%
Tumor Hypo/Acellular Stroma:	10%
Tumor Hypercellular Stroma:	0%
Necrosis:	40%
Bioanalyzer Ratio (28S/18S):	1.57
CASE Diagnosis (from medical center path report):	Carcinoma of liver, hepatocellular
Age:	60

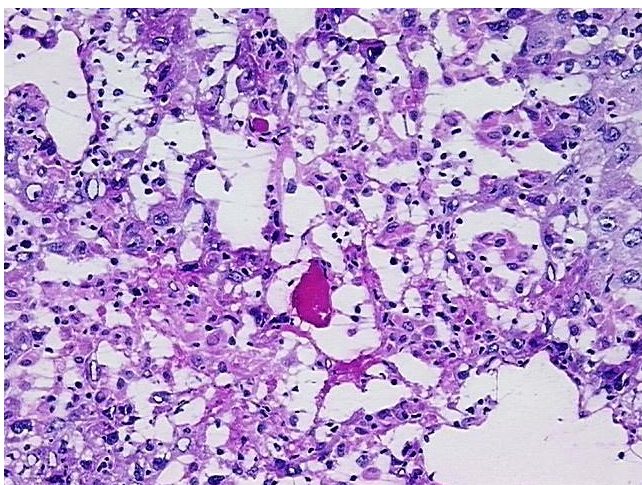


[View online »](#)

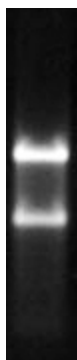
Gender:	Male
Tumor Grade:	AJCC G2: Moderately differentiated
Minimum Stage Grouping:	II
T (Extent of Primary Tumor):	T2
N (Lymph node metastasis):	NX
M (Distant metastasis):	MX
Storage:	Store tissue total RNA at -80°C.
Stability:	These products are stable for one year from date of shipping when stored at -80°C without repeated freeze/thaws.

**Product images:**

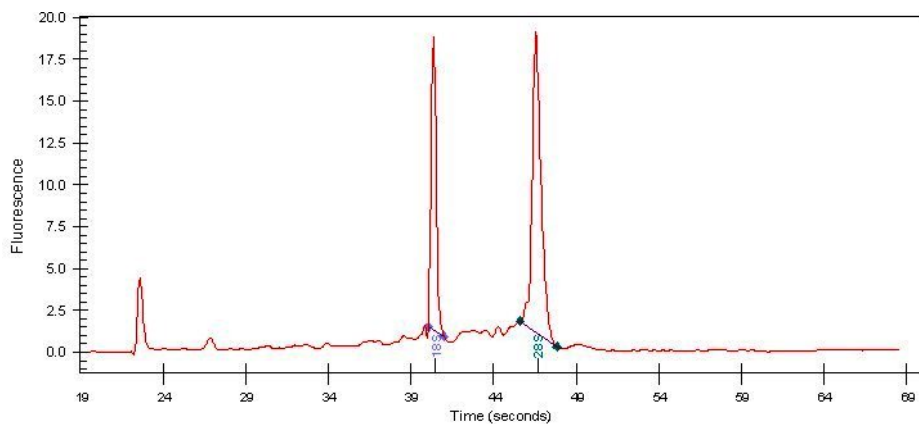
4x Image



20x Image



RNA Gel Image



RNA Electropherogram Image



RNA RT-PCR Image