

Product datasheet for CR561653

Tissue Total RNA, Lymphoid tissue

Product data:

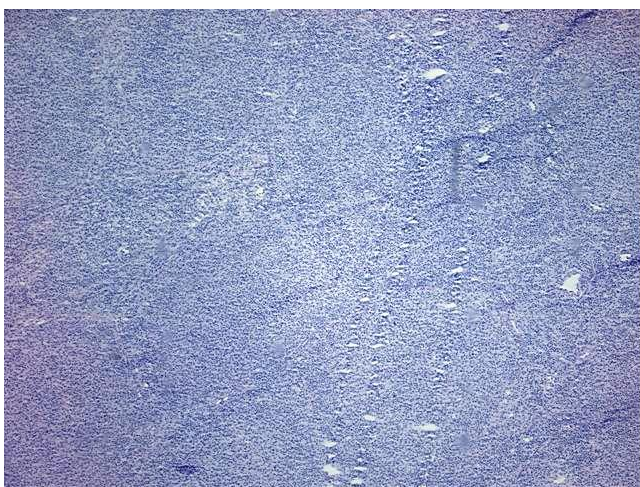
Product Type:	Total RNA
Disease State:	Cancer
Diagnosis Category:	Lymphoma
Tissue:	Lymphoid tissue
Frozen Sample ID:	FR00016130
Case ID:	CU0000005235
Prep:	1
Vial ID:	RN00000930
Tissue of Origin:	Lymphoid tissue
Site of Finding:	Neck
Appearance:	Tumor
Sample Diagnosis (from Pathology Verification):	Lymphoma, follicular
Normal:	10%
Lesional:	0%
Tumor:	80%
Tumor Hypo/Acellular Stroma:	0%
Tumor Hypercellular Stroma:	10%
Necrosis:	0%
Pathology Verification notes from H&E review:	The original path report stated that the flow cytometric analysis confirms the diagnosis of monoclonal B cell lymphoproliferative disorder compatible with follicular cell lymphoma
Bioanalyzer Ratio (28S/18S):	1.63



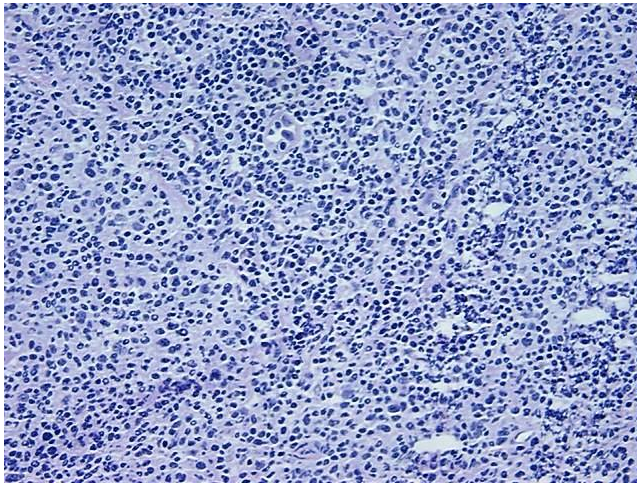
[View online »](#)

CASE Diagnosis (from medical center path report):	Lymphoma, follicular
Age:	67
Gender:	Not specified
Tumor Grade:	WHO Grade I
Minimum Stage Grouping:	I
T (Extent of Primary Tumor):	Not applicable
N (Lymph node metastasis):	Not applicable
M (Distant metastasis):	Not applicable
Storage:	Store tissue total RNA at -80°C.
Stability:	These products are stable for one year from date of shipping when stored at -80°C without repeated freeze/thaws.

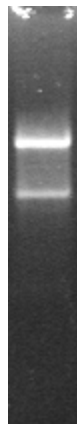
Product images:



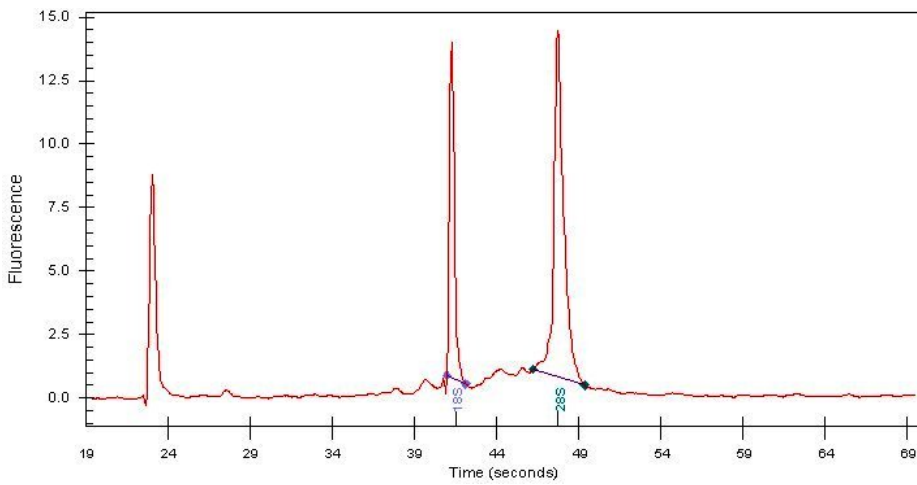
4x Image



20x Image



RNA Gel Image



RNA Electropherogram Image



RNA RT-PCR Image