

## Product datasheet for CR561636

### Tissue Total RNA, Endometrium

#### Product data:

Product Type:	Total RNA
Disease State:	Cancer
Diagnosis Category:	Endometrial Cancer
Tissue:	Endometrium
Frozen Sample ID:	FR000161C0
Case ID:	CU00000005243
Prep:	1
Vial ID:	RN000000A5A
Tissue of Origin:	Endometrium
Site of Finding:	Omentum
Appearance:	Tumor
Sample Diagnosis (from Pathology Verification):	Adenocarcinoma of endometrium, serous, metastatic
Normal:	5%
Lesional:	0%
Tumor:	40%
Tumor Hypo/Acellular Stroma:	55%
Tumor Hypercellular Stroma:	0%
Necrosis:	0%
Pathology Verification notes from H&E review:	Metastatic adenocarcinoma of endometrium to omentum with desmoplastic changes (cellular stroma)
Bioanalyzer Ratio (28S/18S):	1.27


[View online »](#)

**CASE Diagnosis (from medical center path report):** Adenocarcinoma of endometrium, papillary serous

**Age:** 66

**Gender:** Female

**Tumor Grade:** FIGO G3: Poorly differentiated

**Minimum Stage** IVA

**Grouping:**

**T (Extent of Primary Tumor):** T4

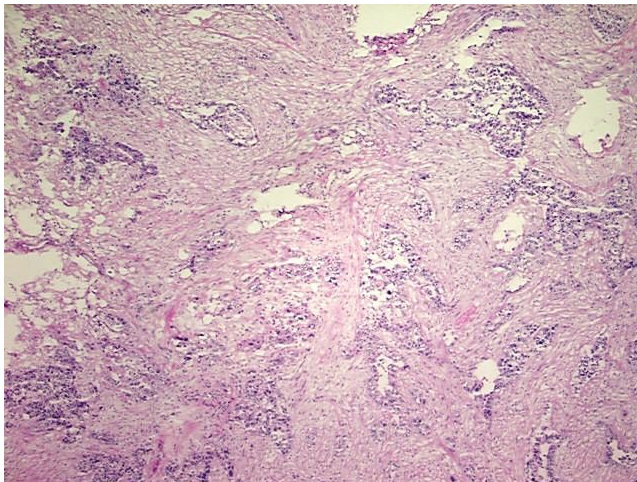
**N (Lymph node metastasis):** NX

**M (Distant metastasis):** MX

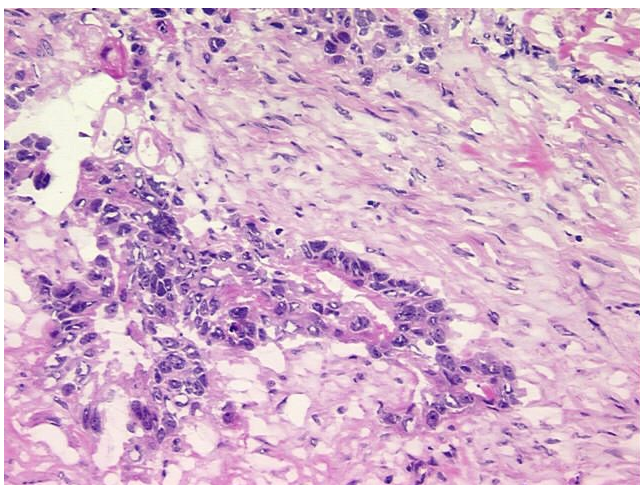
**Storage:** Store tissue total RNA at -80°C.

**Stability:** These products are stable for one year from date of shipping when stored at -80°C without repeated freeze/thaws.

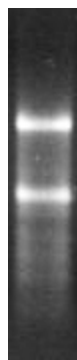
## Product images:



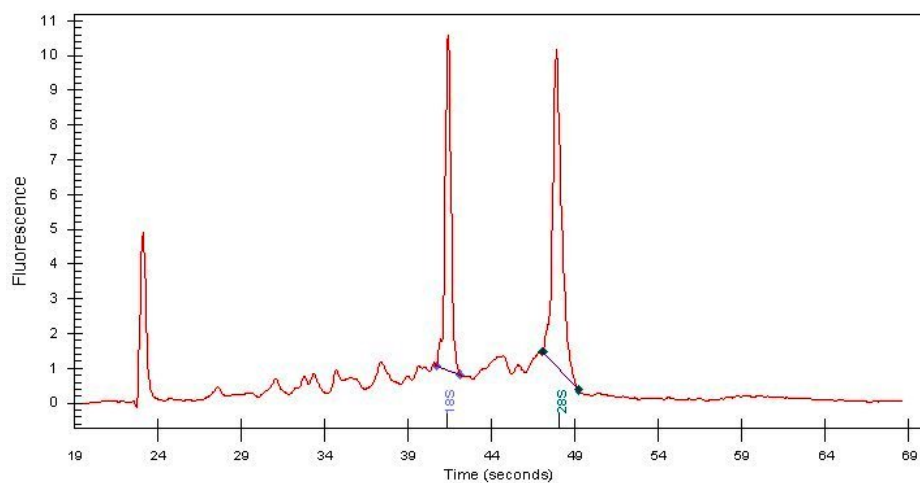
4x Image



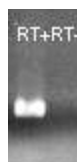
20x Image



RNA Gel Image



RNA Electropherogram Image



RNA RT-PCR Image