

## Product datasheet for CR561628

### Tissue Total RNA, Colon

#### Product data:

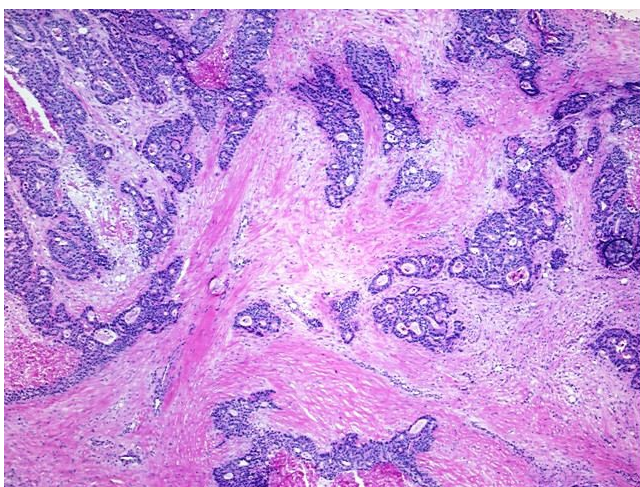
Product Type:	Total RNA
Disease State:	Cancer
Diagnosis Category:	Colorectal Cancer
Tissue:	Colon
Frozen Sample ID:	FR5B335670
Case ID:	CU0000005126
Prep:	4
Vial ID:	RN0000084E
Tissue of Origin:	Colon
Site of Finding:	Mesentery
Appearance:	Tumor
Sample Diagnosis (from Pathology Verification):	Adenocarcinoma of colon
Normal:	5%
Lesional:	0%
Tumor:	55%
Tumor Hypo/Acellular Stroma:	0%
Tumor Hypercellular Stroma:	35%
Necrosis:	5%
Pathology Verification notes from H&E review:	Tumor: normal component consists of adipose tissue of mesentery, colonic adenocarcinoma invading mesenteric fat
Bioanalyzer Ratio (28S/18S):	1.94



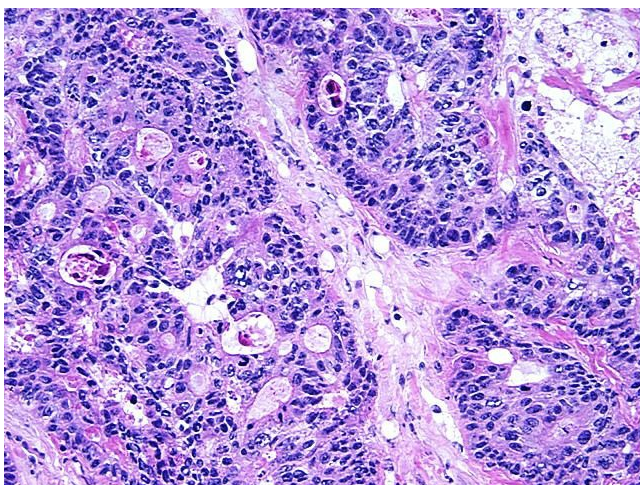
[View online »](#)

CASE Diagnosis (from medical center path report):	Adenocarcinoma of colon
Age:	36
Gender:	Female
Tumor Grade:	AJCC G2: Moderately differentiated
Minimum Stage Grouping:	III
T (Extent of Primary Tumor):	T3
N (Lymph node metastasis):	N2
M (Distant metastasis):	MX
Storage:	Store tissue total RNA at -80°C.
Stability:	These products are stable for one year from date of shipping when stored at -80°C without repeated freeze/thaws.

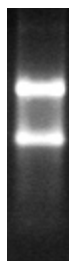
### Product images:



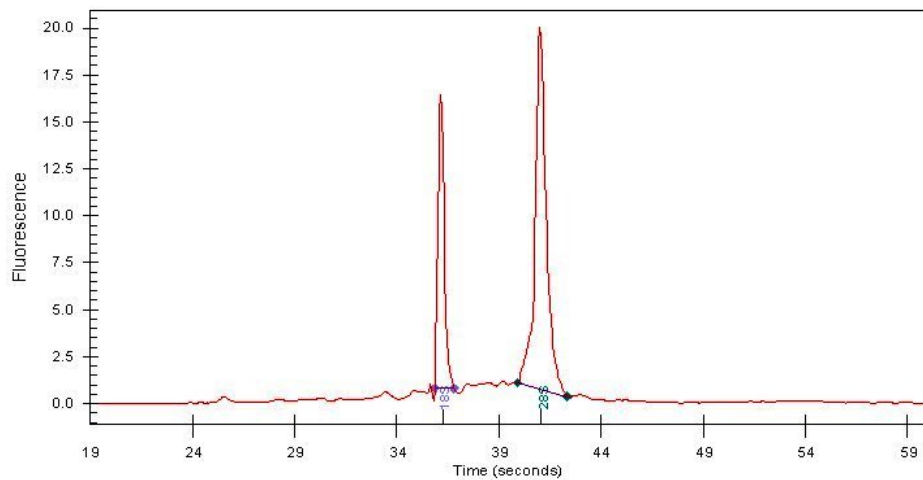
4x Image



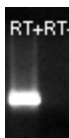
20x Image



RNA Gel Image



RNA Electropherogram Image



RNA RT-PCR Image