

## Product datasheet for CR561615

### Tissue Total RNA, Ovary

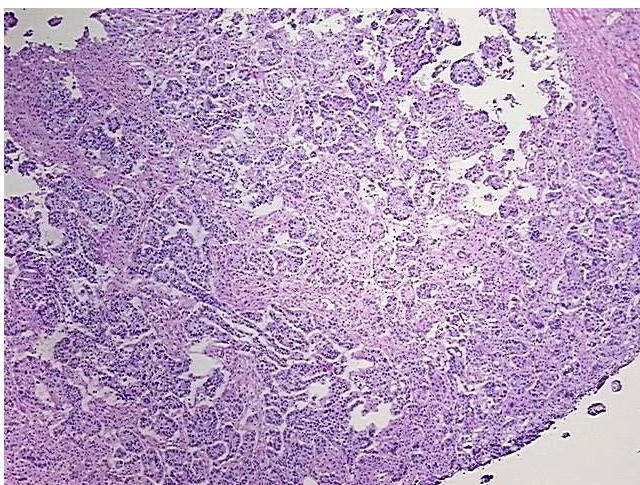
#### Product data:

Product Type:	Total RNA
Disease State:	Cancer
Diagnosis Category:	Ovarian Cancer
Tissue:	Ovary
Frozen Sample ID:	FR65EDE867
Case ID:	CU0000005167
Prep:	1
Vial ID:	RN000011E2
Tissue of Origin:	Ovary
Site of Finding:	Lymph node
Appearance:	Tumor
Sample Diagnosis (from Pathology Verification):	Adenocarcinoma of ovary, papillary serous, metastatic
Normal:	1%
Lesional:	0%
Tumor:	75%
Tumor Hypo/Acellular Stroma:	24%
Tumor Hypercellular Stroma:	0%
Necrosis:	0%
Bioanalyzer Ratio (28S/18S):	1.48
CASE Diagnosis (from medical center path report):	Adenocarcinoma of ovary, papillary serous
Age:	49

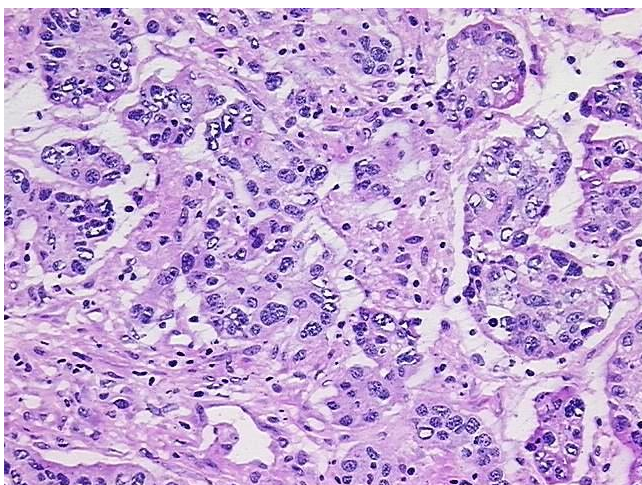


[View online »](#)

Gender:	Female
Tumor Grade:	FIGO G3: Poorly differentiated
Minimum Stage Grouping:	IIIC
T (Extent of Primary Tumor):	T1b
N (Lymph node metastasis):	N1
M (Distant metastasis):	MX
Storage:	Store tissue total RNA at -80°C.
Stability:	These products are stable for one year from date of shipping when stored at -80°C without repeated freeze/thaws.

**Product images:**

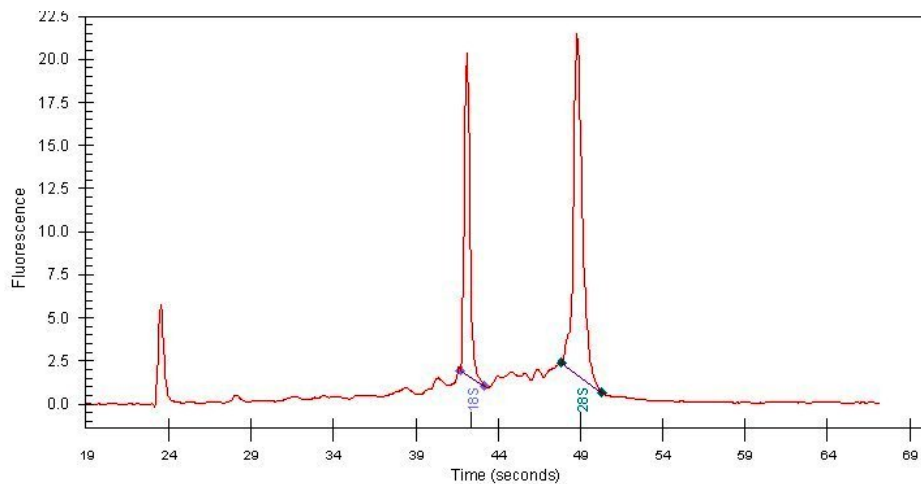
4x Image



20x Image



RNA Gel Image



RNA Electropherogram Image



RNA RT-PCR Image