

Product datasheet for CR561612

Tissue Total RNA, Ovary: right

Product data:

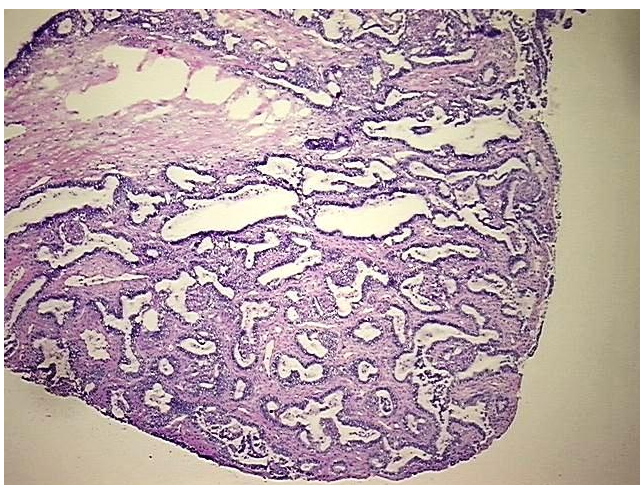
Product Type:	Total RNA
Disease State:	Cancer
Diagnosis Category:	Ovarian Cancer
Tissue:	Ovary
Frozen Sample ID:	FR00019E14
Case ID:	CU0000005186
Prep:	1
Vial ID:	RN000039CF
Tissue of Origin:	Ovary: right
Site of Finding:	Ovary: right
Appearance:	Tumor
Sample Diagnosis (from Pathology Verification):	Carcinoma of ovary, endometrioid
Normal:	0%
Lesional:	0%
Tumor:	70%
Tumor Hypo/Acellular Stroma:	30%
Tumor Hypercellular Stroma:	0%
Necrosis:	0%
Pathology Verification notes from H&E review:	Inflammation: Moderate Mixed inflammatory infiltrate
Bioanalyzer Ratio (28S/18S):	1.18



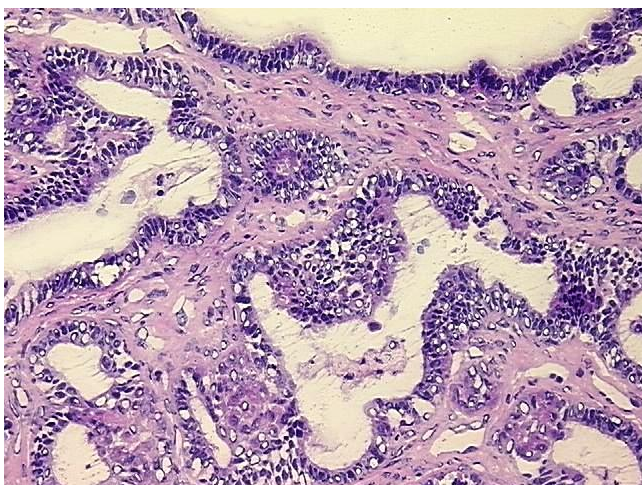
[View online »](#)

CASE Diagnosis (from medical center path report):	Carcinoma of ovary, endometrioid
Age:	31
Gender:	Female
Tumor Grade:	FIGO G2: Moderately differentiated
Minimum Stage Grouping:	IIIC
T (Extent of Primary Tumor):	T1c
N (Lymph node metastasis):	N1
M (Distant metastasis):	MX
Storage:	Store tissue total RNA at -80°C.
Stability:	These products are stable for one year from date of shipping when stored at -80°C without repeated freeze/thaws.

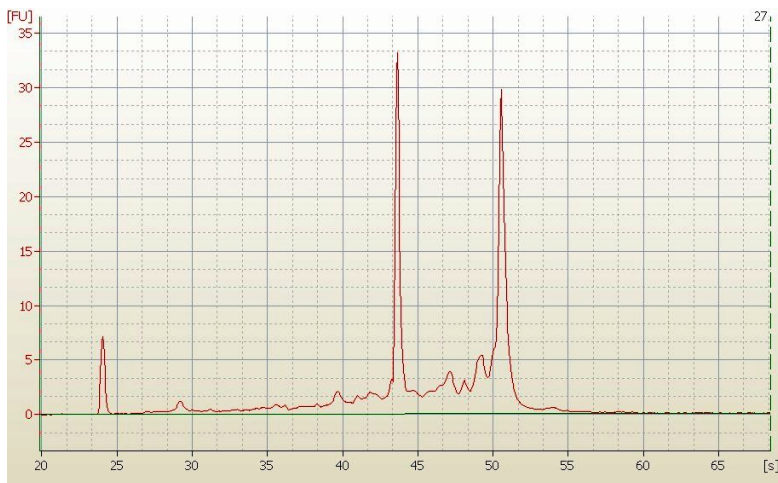
Product images:



4x Image



20x Image



RNA Electropherogram Image



RNA RT-PCR Image