

Product datasheet for **CR561584**

Tissue Total RNA, Lung

Product data:

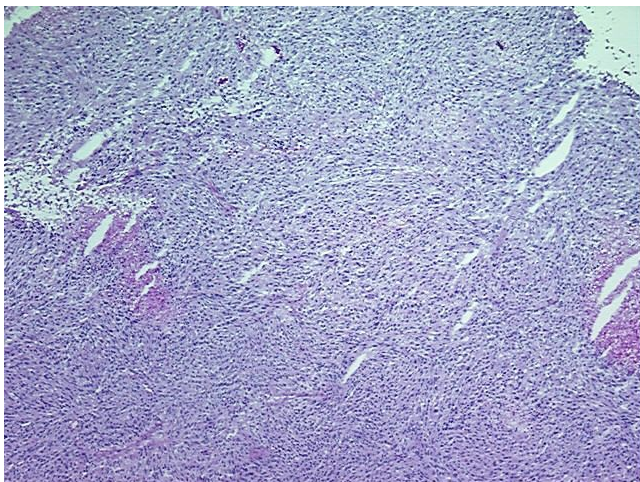
Product Type:	Total RNA
Disease State:	Cancer
Diagnosis Category:	Lung Cancer
Tissue:	Lung
Frozen Sample ID:	FR65EDEBDC
Case ID:	CU0000005343
Prep:	1
Vial ID:	RN00000DBA
Tissue of Origin:	Lung
Site of Finding:	Lung
Appearance:	Tumor
Sample Diagnosis (from Pathology Verification):	Carcinoma of lung, sarcomatoid
Normal:	0%
Lesional:	0%
Tumor:	90%
Tumor Hypo/Acellular Stroma:	3%
Tumor Hypercellular Stroma:	0%
Necrosis:	7%
Pathology Verification notes from H&E review:	Tumor contains mostly spindle component.
Bioanalyzer Ratio (28S/18S):	2.06



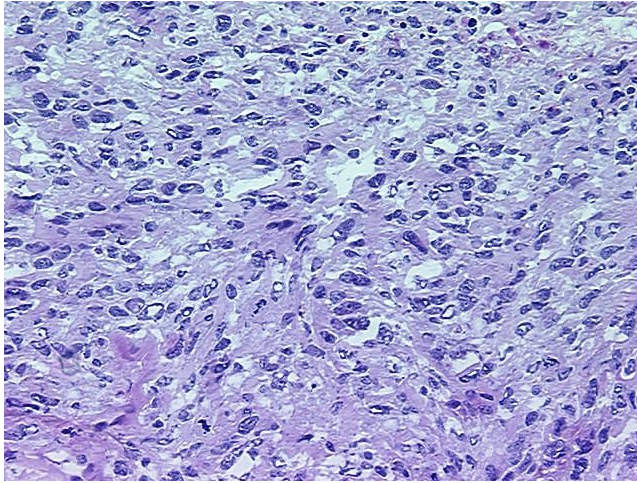
[View online »](#)

CASE Diagnosis (from medical center path report):	Carcinoma of lung, sarcomatoid
Age:	61
Gender:	Female
Tumor Grade:	AJCC G4: Undifferentiated
Minimum Stage Grouping:	IB
T (Extent of Primary Tumor):	T2
N (Lymph node metastasis):	N0
M (Distant metastasis):	MX
Diagnostic Test Results:	CD227 ~ MUC1 ~ EMA ~ CA15-3 ! by IHC,Positive, weak; Cytokeratin (Pan) ~ Keratin, Pan ! by IHC,Positive, weak; MART-1 ~ Melanoma Marker ~ Melan-A,Negative; Vimentin ~ VIM ! by IHC,Positive, weak; S100 protein,Negative; HMB45 melanoma antigen
Storage:	Store tissue total RNA at -80°C.
Stability:	These products are stable for one year from date of shipping when stored at -80°C without repeated freeze/thaws.

Product images:



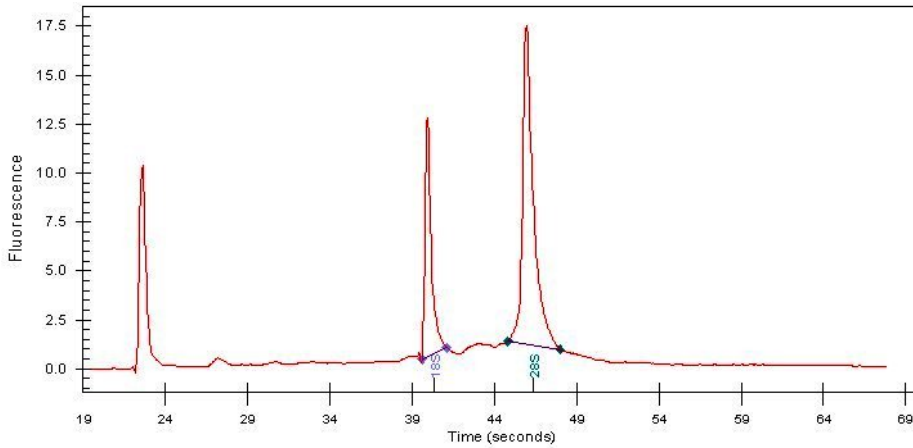
4x Image



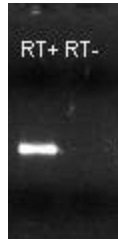
20x Image



RNA Gel Image



RNA Electropherogram Image



RNA RT-PCR Image