

Product datasheet for CR561553

Tissue Total RNA, Uterus

Product data:

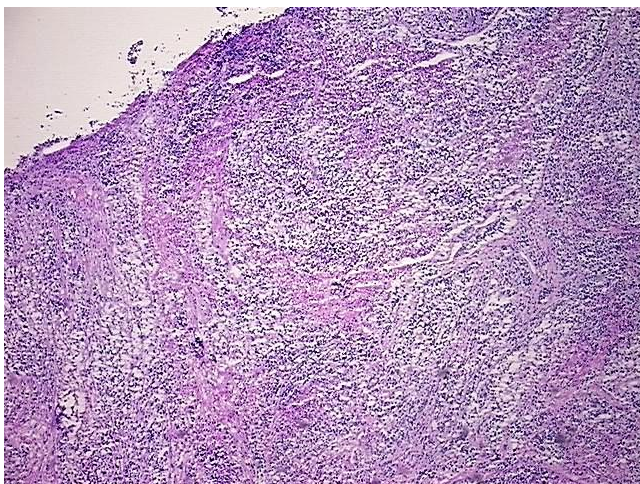
Product Type:	Total RNA
Disease State:	Cancer
Diagnosis Category:	Uterine Cancer
Tissue:	Uterus
Frozen Sample ID:	FR0001E6BA
Case ID:	CU0000006162
Prep:	1
Vial ID:	RN00002CB1
Tissue of Origin:	Uterus
Site of Finding:	Myometrium
Appearance:	Tumor
Sample Diagnosis (from Pathology Verification):	Carcinoma of uterus, neuroendocrine
Normal:	5%
Lesional:	0%
Tumor:	80%
Tumor Hypo/Acellular Stroma:	5%
Tumor Hypercellular Stroma:	5%
Necrosis:	5%
Bioanalyzer Ratio (28S/18S):	1.53
CASE Diagnosis (from medical center path report):	Carcinoma of uterus, neuroendocrine
Age:	67



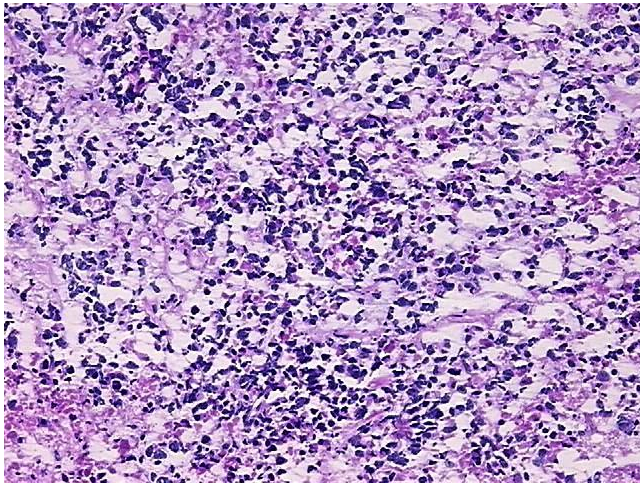
[View online »](#)

Gender:	Female
Tumor Grade:	FIGO G3: Poorly differentiated
Minimum Stage Grouping:	III
T (Extent of Primary Tumor):	T3
N (Lymph node metastasis):	NX
M (Distant metastasis):	MX
Diagnostic Test Results:	CD227 ~ MUC1 ~ EMA ~ CA15-3 ! by IHC,Negative; Cytokeratin (Pan) ~ Keratin, Pan ! by IHC,Positive; Synaptophysin ~ SYN ! by IHC,Positive; Neuron specific enolase ~ NSE ! by IHC,Positive; Vimentin ~ VIM ! by IHC,Positive; S100 protein,Negativ
Storage:	Store tissue total RNA at -80°C.
Stability:	These products are stable for one year from date of shipping when stored at -80°C without repeated freeze/thaws.

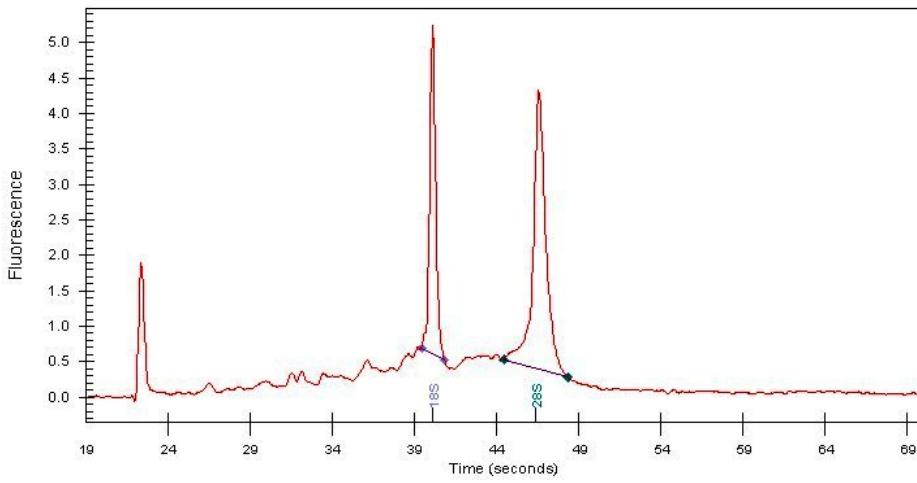
Product images:



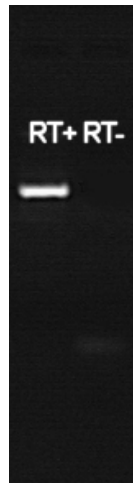
4x Image



20x Image



RNA Electropherogram Image



RNA RT-PCR Image