

## Product datasheet for **CR561545**

### Tissue Total RNA, Breast

#### Product data:

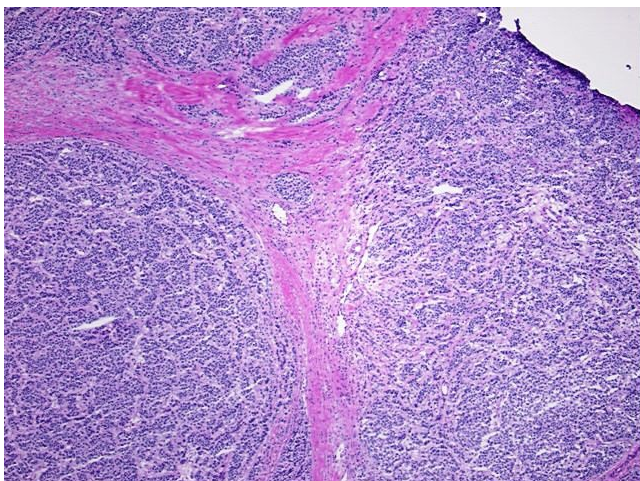
Product Type:	Total RNA
Disease State:	Cancer
Diagnosis Category:	Breast Cancer
Tissue:	Breast
Frozen Sample ID:	FR0001D736
Case ID:	CU0000006538
Prep:	1
Vial ID:	RN00000BA7
Tissue of Origin:	Breast
Site of Finding:	Breast
Appearance:	Tumor
Sample Diagnosis (from Pathology Verification):	Adenocarcinoma of breast, ductal
Normal:	0%
Lesional:	0%
Tumor:	80%
Tumor Hypo/Acellular Stroma:	10%
Tumor Hypercellular Stroma:	10%
Necrosis:	0%
Bioanalyzer Ratio (28S/18S):	1.82
CASE Diagnosis (from medical center path report):	Adenocarcinoma of breast, ductal
Age:	42



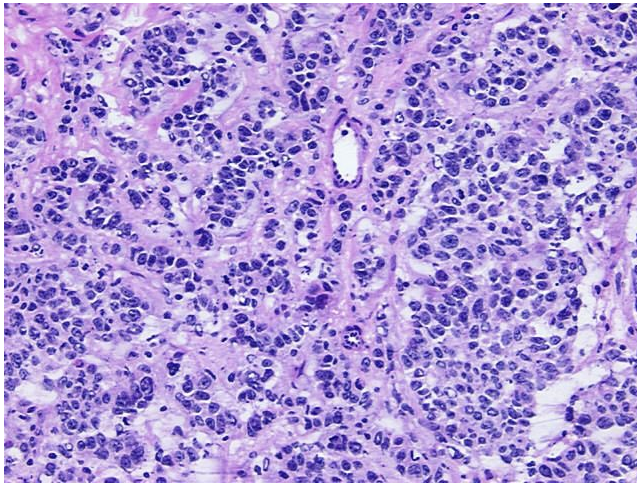
[View online »](#)

Gender:	Female
Tumor Grade:	Nottingham G2: 6-7 points Intermediate combined grade (moderately favorable)
Minimum Stage Grouping:	IIA
T (Extent of Primary Tumor):	T2
N (Lymph node metastasis):	N0
M (Distant metastasis):	MX
Diagnostic Test Results:	Progesterone receptor ~ PR ! by IHC,Positive; Synaptophysin ~ SYN ! by IHC,Positive; Neuron specific enolase ~ NSE ! by IHC,Positive; Estrogen receptor ~ ER ! by IHC,Positive; Chromogranin A ~ Parathyroid secretory protein 1 ! by IHC,Positive; H
Storage:	Store tissue total RNA at -80°C.
Stability:	These products are stable for one year from date of shipping when stored at -80°C without repeated freeze/thaws.

### Product images:



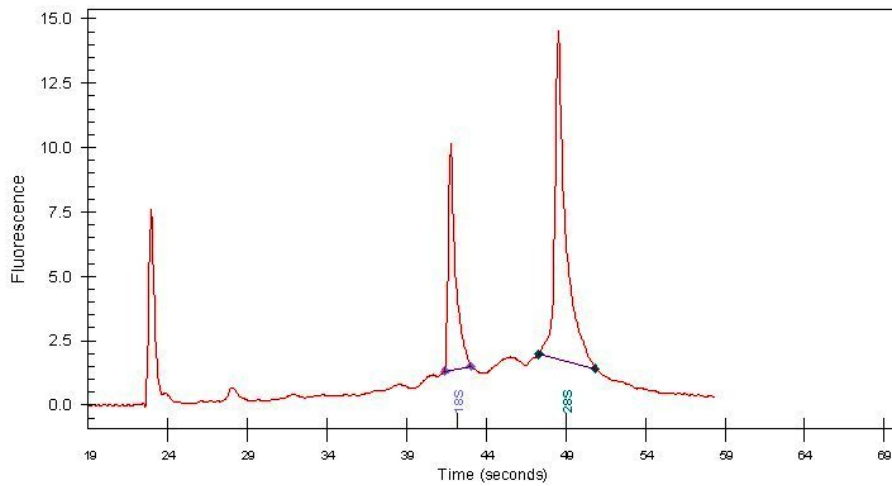
4x Image



20x Image



RNA Gel Image



RNA Electropherogram Image



RNA RT-PCR Image