

Product datasheet for CR561544

Tissue Total RNA, Lymphoid tissue

Product data:

Product Type:	Total RNA
Disease State:	Cancer
Diagnosis Category:	Lymphoma
Tissue:	Lymphoid tissue
Frozen Sample ID:	FR0001D73F
Case ID:	CU0000006539
Prep:	1
Vial ID:	RN00000CCB
Tissue of Origin:	Lymphoid tissue
Site of Finding:	Multiple digestive system sites
Appearance:	Tumor
Sample Diagnosis (from Pathology Verification):	Lymphoma, large B-cell, diffuse
Normal:	0%
Lesional:	0%
Tumor:	90%
Tumor Hypo/Acellular Stroma:	5%
Tumor Hypercellular Stroma:	0%
Necrosis:	5%
Pathology Verification notes from H&E review:	accurate estimate of tumor versus normal component in lymphoma can only be made based on immunostains; the percentage presented here may not be accurate
Bioanalyzer Ratio (28S/18S):	1.24



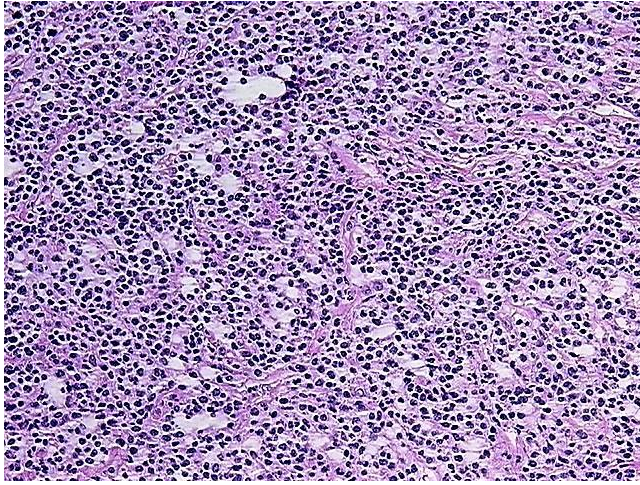
[View online »](#)

CASE Diagnosis (from medical center path report):	Lymphoma, large B-cell, diffuse
Age:	74
Gender:	Female
Tumor Grade:	Not Reported
Minimum Stage Grouping:	IIE
T (Extent of Primary Tumor):	Not applicable
N (Lymph node metastasis):	Not applicable
M (Distant metastasis):	Not applicable
Diagnostic Test Results:	CD19 ~ B4 ~ Leu12 ! by IHC,Positive; Ki67 ~ MIB1 ! by IHC,Positive; Kappa light chain ! by IHC,Positive; IgM ~ Mu-heavy chain ! by IHC,Positive; IgD ~ delta-Heavy Chain,Positive; CD5 ~ Leu1 ! by IHC,Negative; CD38 ~ Leu17 ~ T16 ! by IHC,Pos
Storage:	Store tissue total RNA at -80°C.
Stability:	These products are stable for one year from date of shipping when stored at -80°C without repeated freeze/thaws.

Product images:



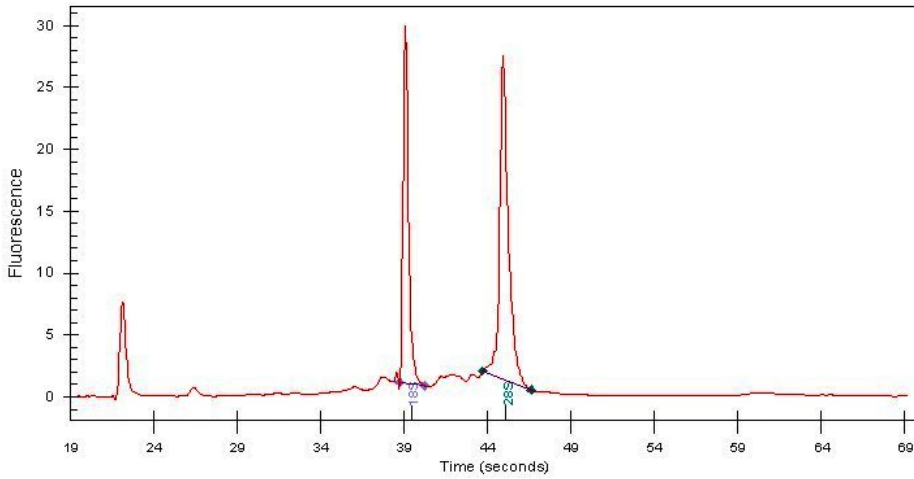
4x Image



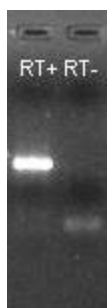
20x Image



RNA Gel Image



RNA Electropherogram Image



RNA RT-PCR Image