

Product datasheet for CR561522

Tissue Total RNA, Ovary

Product data:

Product Type:	Total RNA
Disease State:	Cancer
Diagnosis Category:	Ovarian Cancer
Tissue:	Ovary
Frozen Sample ID:	FR00027F64
Case ID:	CU0000006106
Prep:	2
Vial ID:	RN00002285
Tissue of Origin:	Ovary
Site of Finding:	Omentum
Appearance:	Tumor
Sample Diagnosis (from Pathology Verification):	Adenocarcinoma of ovary, papillary serous, metastatic
Normal:	0%
Lesional:	0%
Tumor:	60%
Tumor Hypo/Acellular Stroma:	35%
Tumor Hypercellular Stroma:	0%
Necrosis:	5%
Pathology Verification notes from H&E review:	Tumor Stroma (Cellular): Desmoplastic reaction, Fibroblastic cells, Inflammatory cells
Bioanalyzer Ratio (28S/18S):	1.33



[View online »](#)

CASE Diagnosis (from medical center path report): Adenocarcinoma of ovary, papillary serous

Age: 37

Gender: Female

Tumor Grade: FIGO G3: Poorly differentiated

Minimum Stage IIIB

Grouping:

T (Extent of Primary Tumor): T3b

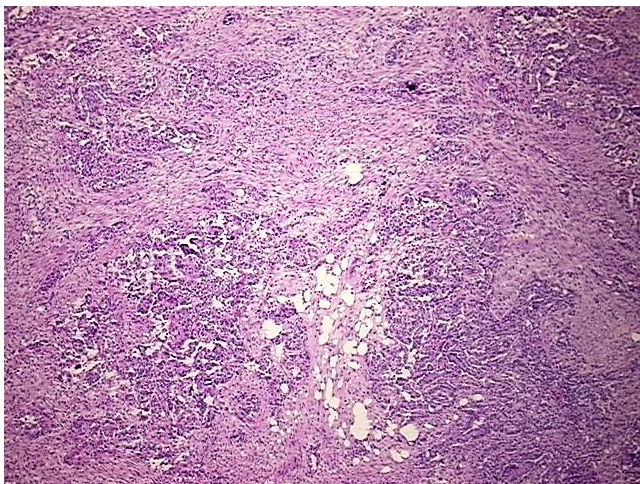
N (Lymph node metastasis): NX

M (Distant metastasis): MX

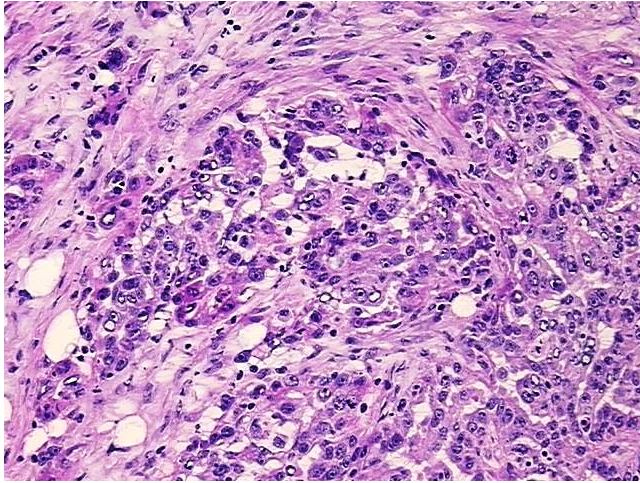
Storage: Store tissue total RNA at -80°C.

Stability: These products are stable for one year from date of shipping when stored at -80°C without repeated freeze/thaws.

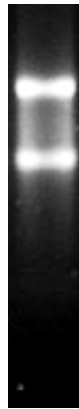
Product images:



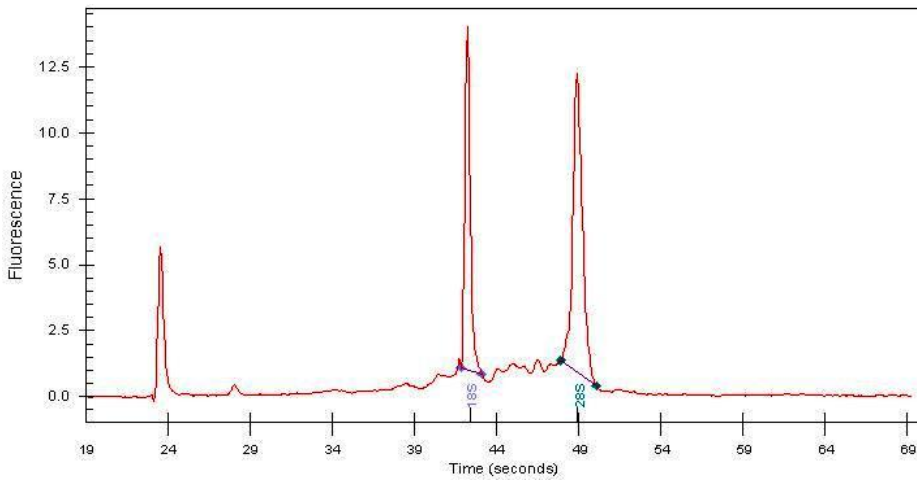
4x Image



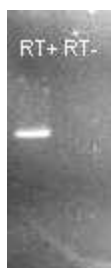
20x Image



RNA Gel Image



RNA Electropherogram Image



RNA RT-PCR Image