

Product datasheet for CR561520

Tissue Total RNA, Colon: transverse

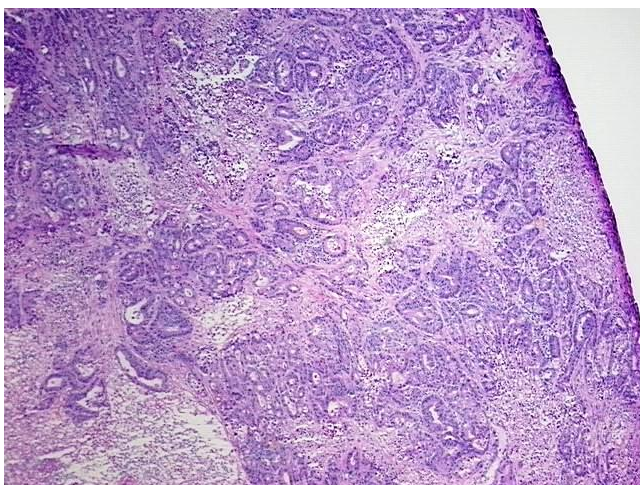
Product data:

Product Type:	Total RNA
Disease State:	Cancer
Diagnosis Category:	Colorectal Cancer
Tissue:	Colon
Frozen Sample ID:	FR5B338C8D
Case ID:	CU0000006114
Prep:	1
Vial ID:	RN00001222
Tissue of Origin:	Colon: transverse
Site of Finding:	Colon: transverse
Appearance:	Tumor
Sample Diagnosis (from Pathology Verification):	Adenocarcinoma of colon
Normal:	0%
Lesional:	0%
Tumor:	70%
Tumor Hypo/Acellular Stroma:	5%
Tumor Hypercellular Stroma:	0%
Necrosis:	25%
Bioanalyzer Ratio (28S/18S):	1.4
CASE Diagnosis (from medical center path report):	Adenocarcinoma of colon
Age:	89

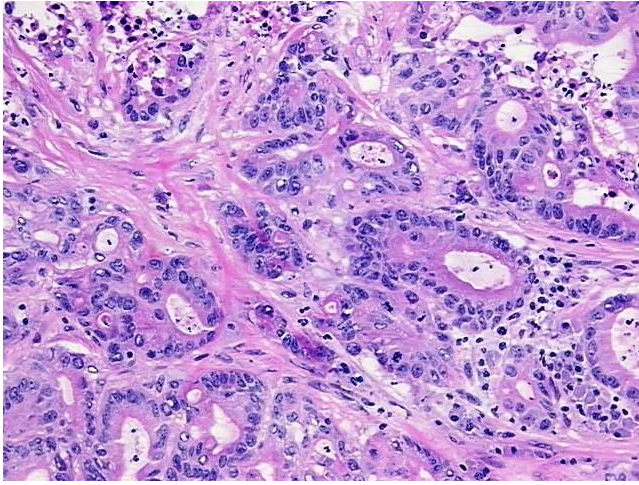


[View online »](#)

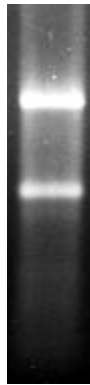
Gender:	Female
Tumor Grade:	AJCC G4: Undifferentiated
Minimum Stage Grouping:	III
T (Extent of Primary Tumor):	T4
N (Lymph node metastasis):	N2
M (Distant metastasis):	MX
Storage:	Store tissue total RNA at -80°C.
Stability:	These products are stable for one year from date of shipping when stored at -80°C without repeated freeze/thaws.

Product images:

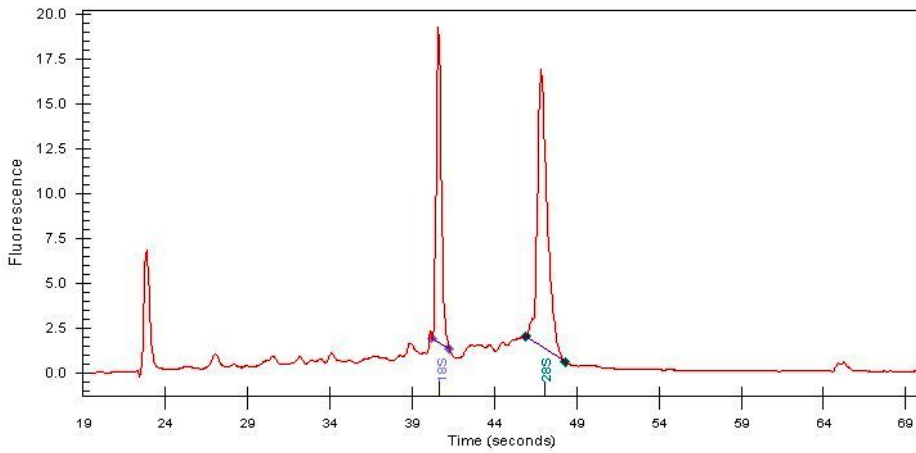
4x Image



20x Image



RNA Gel Image



RNA Electropherogram Image



RNA RT-PCR Image