

## Product datasheet for **CR561507**

### Tissue Total RNA, Breast

#### Product data:

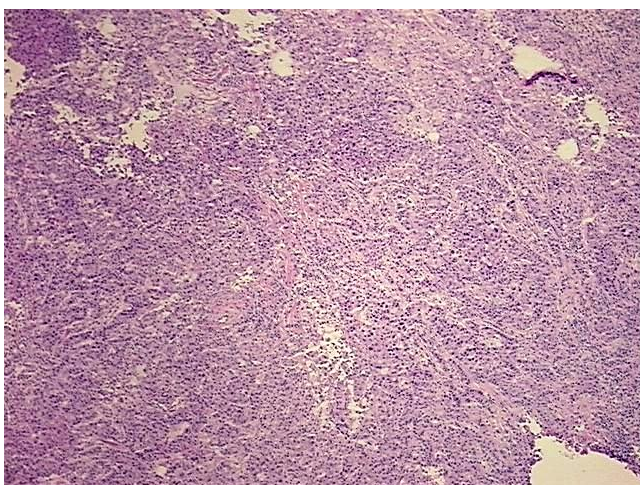
|   |  |
|---|--|
| Product Type:                                   | Total RNA  |
| Disease State:                                  | Cancer   |
| Diagnosis Category:                             | Breast Cancer  |
| Tissue:   | Breast   |
| Frozen Sample ID:                               | FR0001E41B   |
| Case ID:  | CU0000006155   |
| Prep:   | 1  |
| Vial ID:  | RN0000258B   |
| Tissue of Origin:                               | Breast   |
| Site of Finding:                                | Breast   |
| Appearance:                                     | Tumor  |
| Sample Diagnosis (from Pathology Verification): | Adenocarcinoma of breast, ductal (HER2+)               |
| Normal:   | 0%   |
| Lesional:                                       | 0%   |
| Tumor:  | 90%  |
| Tumor Hypo/Acellular Stroma:                    | 5%   |
| Tumor Hypercellular Stroma:                     | 0%   |
| Necrosis:                                       | 5%   |
| Pathology Verification notes from H&E review:   | tumor stroma: prominent lympho- plasmacytic infiltrate |
| Bioanalyzer Ratio (28S/18S):                    | 1.07   |



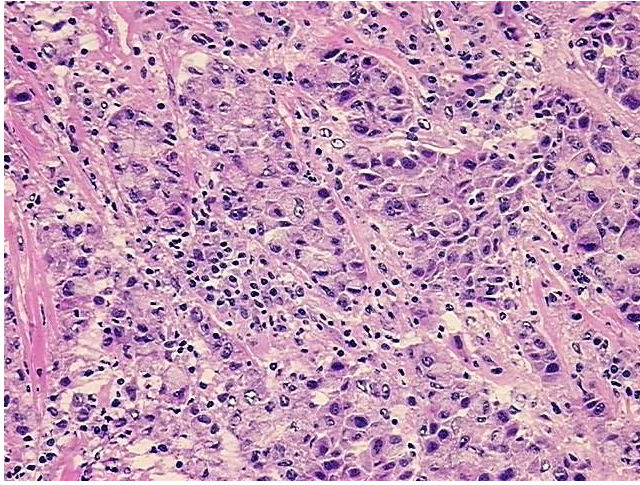
[View online »](#)

|  |  |
|--|--|
| <b>CASE Diagnosis (from medical center path report):</b> | Adenocarcinoma of breast, ductal   |
| <b>Age:</b>  | 57   |
| <b>Gender:</b>   | Female   |
| <b>Tumor Grade:</b>                                      | Nottingham G3: 8-9 points High combined grade (unfavorable)  |
| <b>Minimum Stage Grouping:</b>                           | IIA  |
| <b>T (Extent of Primary Tumor):</b>                      | T2   |
| <b>N (Lymph node metastasis):</b>                        | N0   |
| <b>M (Distant metastasis):</b>                           | MX   |
| <b>Diagnostic Test Results:</b>                          | Progesterone receptor ~ PR ! by IHC,Negative; Estrogen receptor ~ ER ! by IHC,Negative; HER2 ~ ERBB2 ~ Neu ! by IHC,Positive, strong |
| <b>Storage:</b>  | Store tissue total RNA at -80°C.   |
| <b>Stability:</b>  | These products are stable for one year from date of shipping when stored at -80°C without repeated freeze/thaws.                     |

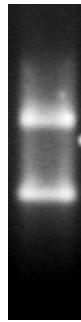
### Product images:



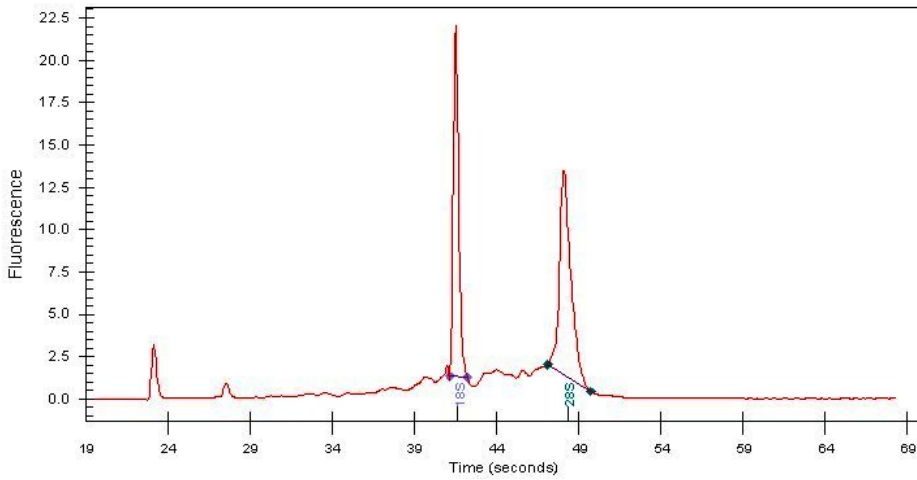
4x Image



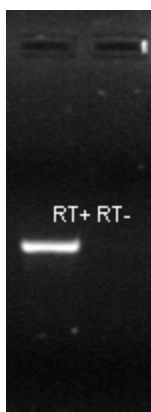
20x Image



RNA Gel Image



RNA Electropherogram Image



RNA RT-PCR Image