

Product datasheet for CR561487

Tissue Total RNA, Urinary bladder

Product data:

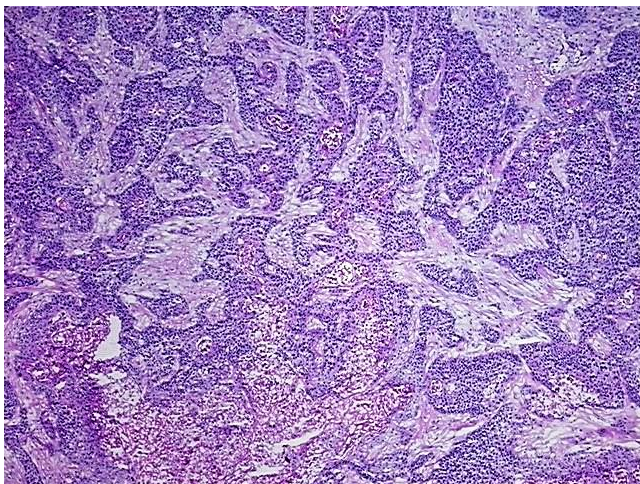
Product Type:	Total RNA
Disease State:	Cancer
Diagnosis Category:	Bladder Cancer
Tissue:	Urinary bladder
Frozen Sample ID:	FR00024CE0
Case ID:	CU0000006471
Prep:	3
Vial ID:	RN000012E0
Tissue of Origin:	Urinary bladder
Site of Finding:	Urinary bladder
Appearance:	Tumor
Sample Diagnosis (from Pathology Verification):	Carcinoma of bladder, transitional cell
Normal:	2%
Lesional:	0%
Tumor:	65%
Tumor Hypo/Acellular Stroma:	8%
Tumor Hypercellular Stroma:	5%
Necrosis:	20%
Pathology Verification notes from H&E review:	Invasive high grade urothelial carcinoma with squamous differentiation; Normal: 2% smooth muscles of bladder wall
Bioanalyzer Ratio (28S/18S):	2.01



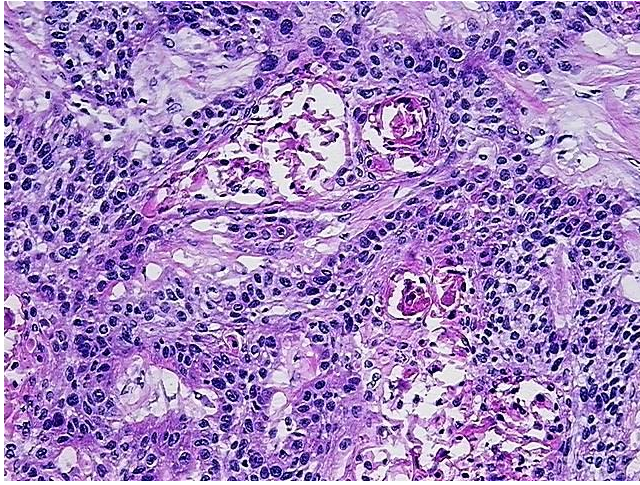
[View online »](#)

CASE Diagnosis (from medical center path report):	Carcinoma of bladder, urothelial
Age:	42
Gender:	Female
Tumor Grade:	AJCC G3: Poorly differentiated
Minimum Stage Grouping:	III
T (Extent of Primary Tumor):	T3
N (Lymph node metastasis):	N0
M (Distant metastasis):	MX
Storage:	Store tissue total RNA at -80°C.
Stability:	These products are stable for one year from date of shipping when stored at -80°C without repeated freeze/thaws.

Product images:



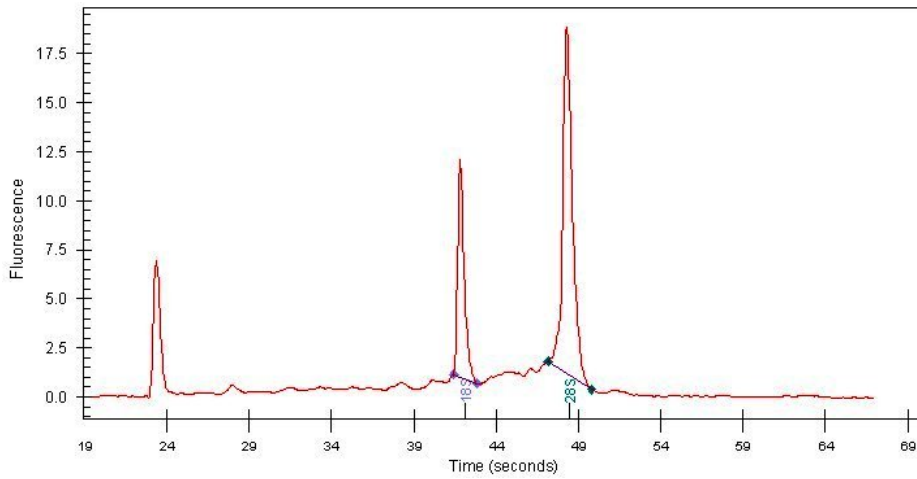
4x Image



20x Image



RNA Gel Image



RNA Electropherogram Image



RNA RT-PCR Image