

Product datasheet for **CR561477**

Tissue Total RNA, Pancreas

Product data:

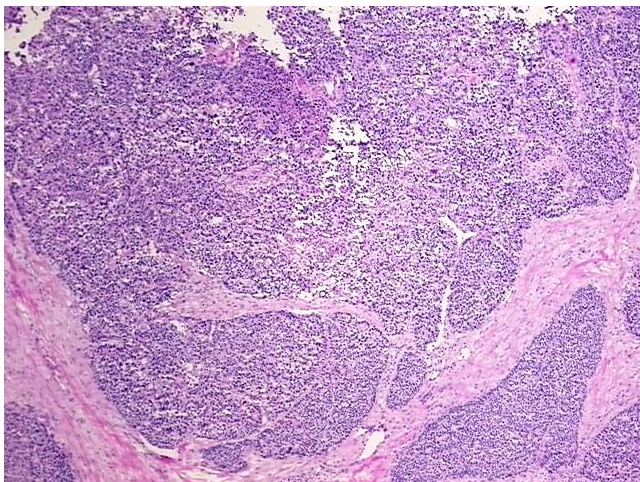
Product Type:	Total RNA
Disease State:	Cancer
Diagnosis Category:	Pancreatic Cancer
Tissue:	Pancreas
Frozen Sample ID:	FR5B339680
Case ID:	CU0000006488
Prep:	1
Vial ID:	RN000015D9
Tissue of Origin:	Pancreas
Site of Finding:	Pancreas
Appearance:	Tumor
Sample Diagnosis (from Pathology Verification):	Carcinoma of pancreas, acinar cell
Normal:	0%
Lesional:	0%
Tumor:	55%
Tumor Hypo/Acellular Stroma:	20%
Tumor Hypercellular Stroma:	0%
Necrosis:	25%
Pathology Verification notes from H&E review:	tumor stroma: 100% desmoplasia
Bioanalyzer Ratio (28S/18S):	1.2



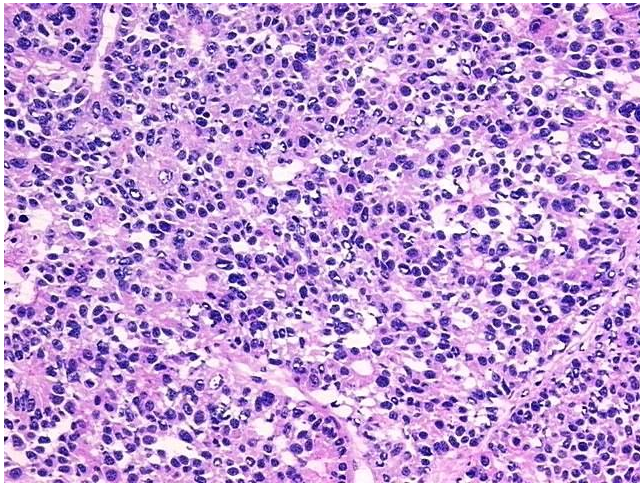
[View online »](#)

CASE Diagnosis (from medical center path report):	Carcinoma of pancreas, acinar cell
Age:	43
Gender:	Male
Tumor Grade:	Not Reported
Minimum Stage Grouping:	IB
T (Extent of Primary Tumor):	T2
N (Lymph node metastasis):	N0
M (Distant metastasis):	MX
Diagnostic Test Results:	Neuron specific enolase ~ NSE ! by IHC,Negative; CD56 ~ NCAM ~ NKH1 ! by IHC,Negative; Synaptophysin ~ SYN ! by IHC,Negative; Cytokeratin 7 ~ CK7 ! by IHC,Positive; Cytokeratin 20 ~ CK20 ! by IHC,Negative; Cytokeratin CAM5.2 ~ CAM5.2 ! by IH
Storage:	Store tissue total RNA at -80°C.
Stability:	These products are stable for one year from date of shipping when stored at -80°C without repeated freeze/thaws.

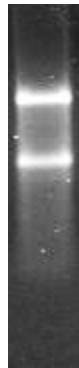
Product images:



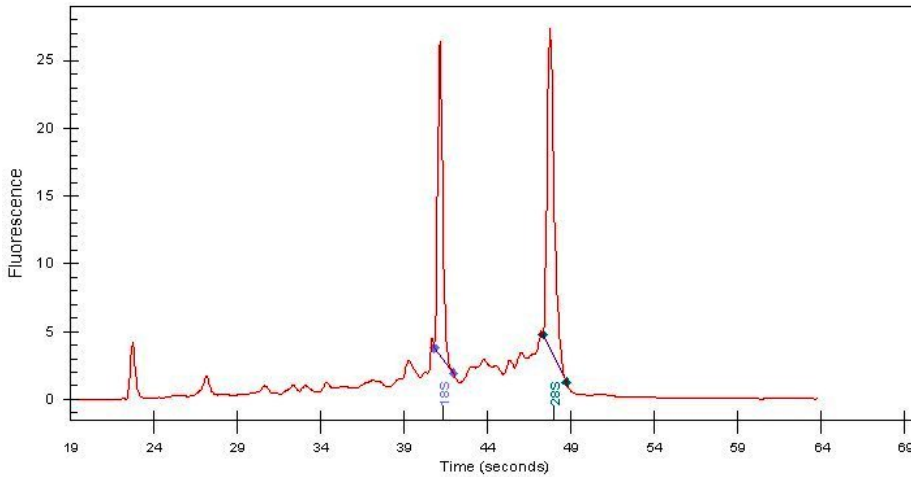
4x Image



20x Image



RNA Gel Image



RNA Electropherogram Image



RNA RT-PCR Image