

## Product datasheet for CR561432

### Tissue Total RNA, Lymphoid tissue

#### Product data:

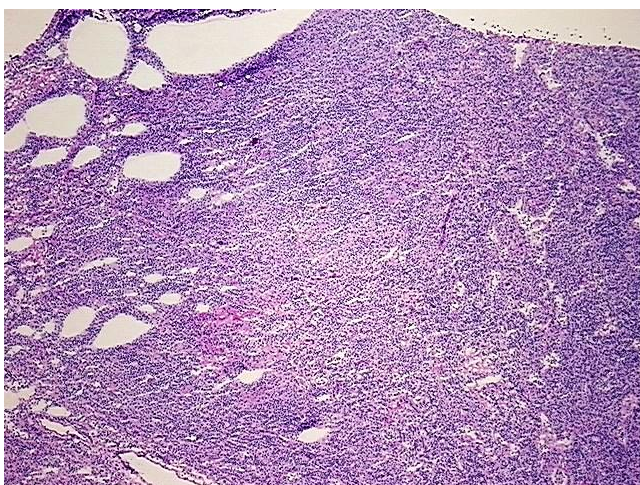
Product Type:	Total RNA
Disease State:	Cancer
Diagnosis Category:	Lymphoma
Tissue:	Lymphoid tissue
Frozen Sample ID:	FR000209EF
Case ID:	CU0000005888
Prep:	1
Vial ID:	RN00000DF0
Tissue of Origin:	Lymphoid tissue
Site of Finding:	Lymph node
Appearance:	Tumor
Sample Diagnosis (from Pathology Verification):	Lymphoma, Hodgkin
Normal:	0%
Lesional:	0%
Tumor:	80%
Tumor Hypo/Acellular Stroma:	10%
Tumor Hypercellular Stroma:	0%
Necrosis:	10%
Pathology Verification notes from H&E review:	Tumor: This lymph node is involved by two lymphoproliferative processes. Flow cytometric analysis demonstrated that in addition to Hodgkin lymphoma, there is also about 9% of small B-cell lymphoma present.
Bioanalyzer Ratio (28S/18S):	1.51



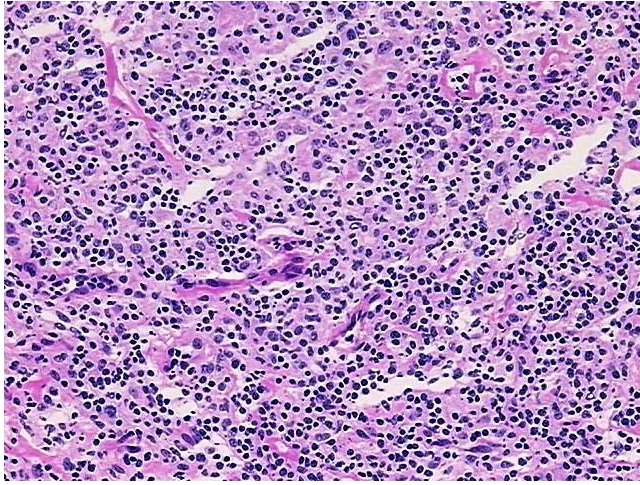
[View online »](#)

CASE Diagnosis (from medical center path report):	Lymphoma, Hodgkin
Age:	82
Gender:	Female
Tumor Grade:	Not Reported
Minimum Stage Grouping:	I
T (Extent of Primary Tumor):	Not applicable
N (Lymph node metastasis):	Not applicable
M (Distant metastasis):	Not applicable
Diagnostic Test Results:	CD3 ~ Leu4 ~ UCHT1 ! by IHC,Negative; CD15 ~ Lewis X ~ Leu M1 ! by IHC,Positive; CD20 ~ B1 ~ Leu16 ! by IHC,Negative; CD30 ~ Ki1 ! by IHC,Positive
Storage:	Store tissue total RNA at -80°C.
Stability:	These products are stable for one year from date of shipping when stored at -80°C without repeated freeze/thaws.

### Product images:



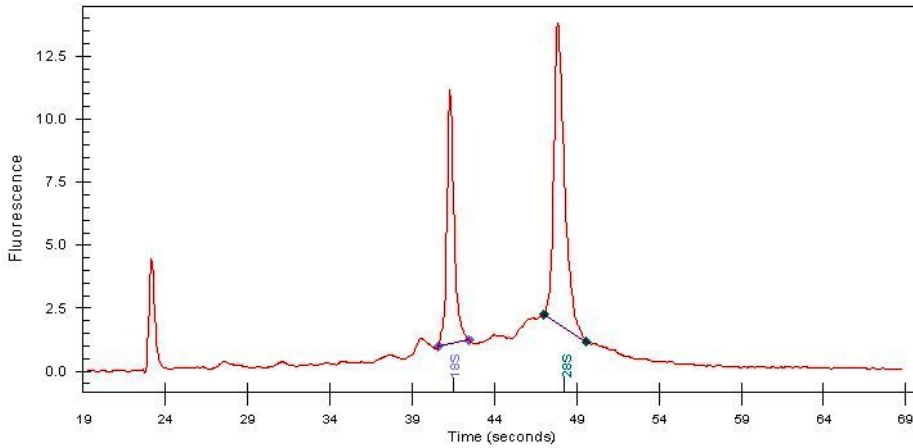
4x Image



20x Image



RNA Gel Image



RNA Electropherogram Image



RNA RT-PCR Image