

## Product datasheet for CR561422

### Tissue Total RNA, Kidney

#### Product data:

Product Type:	Total RNA
Disease State:	Cancer
Diagnosis Category:	Renal Cell Carcinoma
Tissue:	Kidney
Frozen Sample ID:	FR65EE0035
Case ID:	CU0000005834
Prep:	1
Vial ID:	RN000034DD
Tissue of Origin:	Kidney
Site of Finding:	Liver
Appearance:	Tumor
Sample Diagnosis (from Pathology Verification):	Carcinoma of kidney, renal cell, metastatic
Normal:	0%
Lesional:	0%
Tumor:	95%
Tumor Hypo/Acellular Stroma:	5%
Tumor Hypercellular Stroma:	0%
Necrosis:	0%
Pathology Verification notes from H&E review:	Tumor: clear and granular cell type
Bioanalyzer Ratio (28S/18S):	2.46



[View online »](#)

**CASE Diagnosis (from medical center path report):** Carcinoma of kidney, renal cell, clear and granular cell

**Age:** 35

**Gender:** Female

**Tumor Grade:** Fuhrman G2: Nuclei slightly irregular

**Minimum Stage** IV

**Grouping:**

**T (Extent of Primary Tumor):** T2

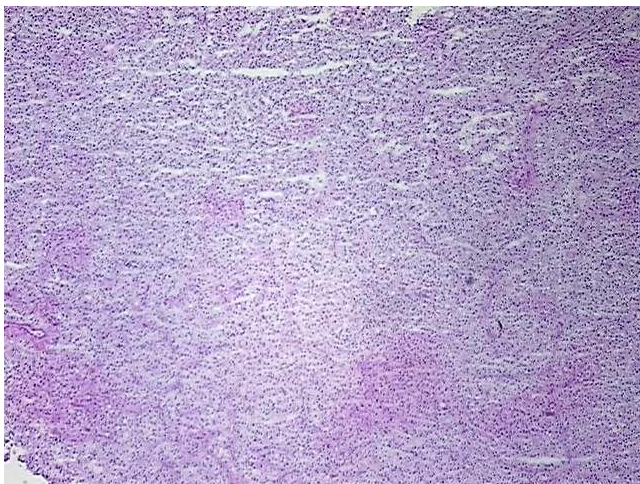
**N (Lymph node metastasis):** N0

**M (Distant metastasis):** M1

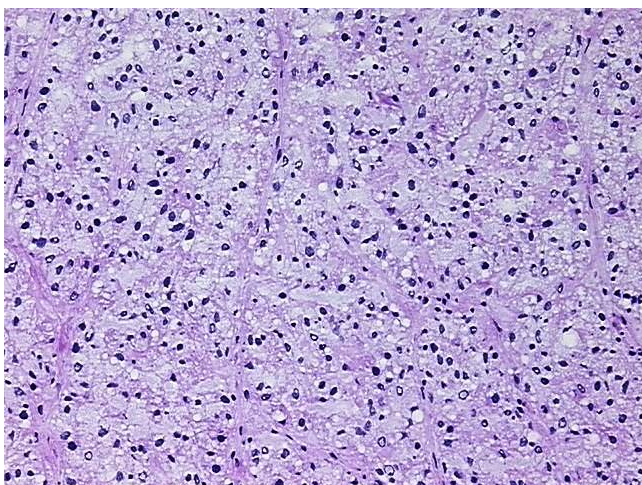
**Storage:** Store tissue total RNA at -80°C.

**Stability:** These products are stable for one year from date of shipping when stored at -80°C without repeated freeze/thaws.

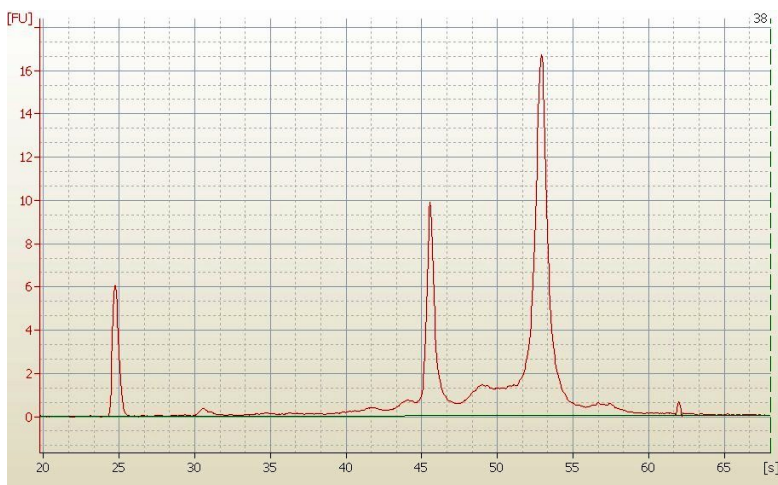
### Product images:



4x Image



20x Image



RNA Electropherogram Image



RNA RT-PCR Image