

Product datasheet for CR561412

Tissue Total RNA, Lymphoid tissue

Product data:

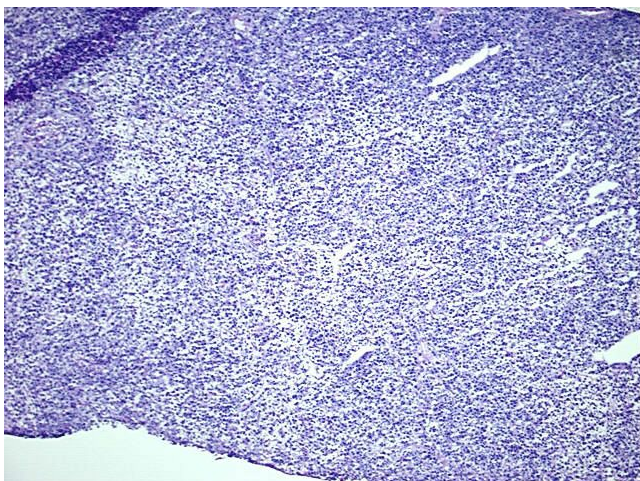
| | |
|---|-----------------------------|
| Product Type: | Total RNA |
| Disease State: | Cancer |
| Diagnosis Category: | Lymphoma |
| Tissue: | Lymphoid tissue |
| Frozen Sample ID: | FR0001A718 |
| Case ID: | CU0000005765 |
| Prep: | 2 |
| Vial ID: | RN000010F9 |
| Tissue of Origin: | Lymphoid tissue |
| Site of Finding: | Testis |
| Appearance: | Tumor |
| Sample Diagnosis (from Pathology Verification): | Lymphoma, peripheral T-cell |
| Normal: | 1% |
| Lesional: | 0% |
| Tumor: | 95% |
| Tumor Hypo/Acellular Stroma: | 0% |
| Tumor Hypercellular Stroma: | 4% |
| Necrosis: | 0% |
| Bioanalyzer Ratio (28S/18S): | 1.34 |
| CASE Diagnosis (from medical center path report): | Lymphoma, peripheral T-cell |
| Age: | 51 |



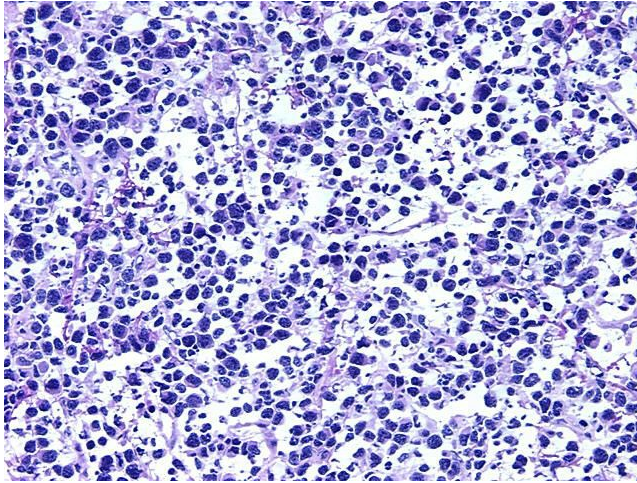
[View online »](#)

| | |
|------------------------------|---|
| Gender: | Male |
| Tumor Grade: | See pathology report |
| Minimum Stage Grouping: | IE |
| T (Extent of Primary Tumor): | Not applicable |
| N (Lymph node metastasis): | Not applicable |
| M (Distant metastasis): | Not applicable |
| Diagnostic Test Results: | CD3 ~ Leu4 ~ UCHT1 ! by FC,Positive; CD19 ~ B4 ~ Leu12 ! by IHC,Negative; CD22 ~ Leu14 ! by IHC,Negative; CD33 ~ My9 ! by IHC,Negative; Kappa light chain ! by IHC,Negative; CD8 ~ Leu2a ~ T8 ! by IHC,Negative; Lambda light chain ! by IHC,Ne |
| Storage: | Store tissue total RNA at -80°C. |
| Stability: | These products are stable for one year from date of shipping when stored at -80°C without repeated freeze/thaws. |

Product images:



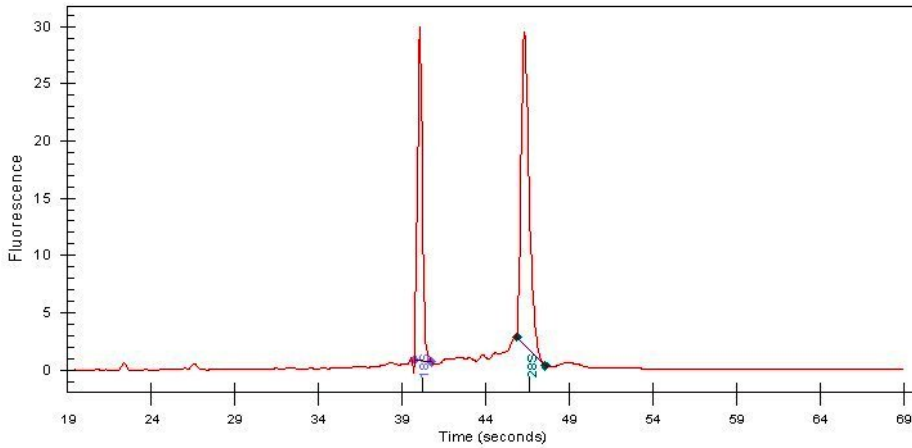
4x Image



20x Image



RNA Gel Image



RNA Electropherogram Image



RNA RT-PCR Image