

Product datasheet for **CR561403**

Tissue Total RNA, Soft tissue

Product data:

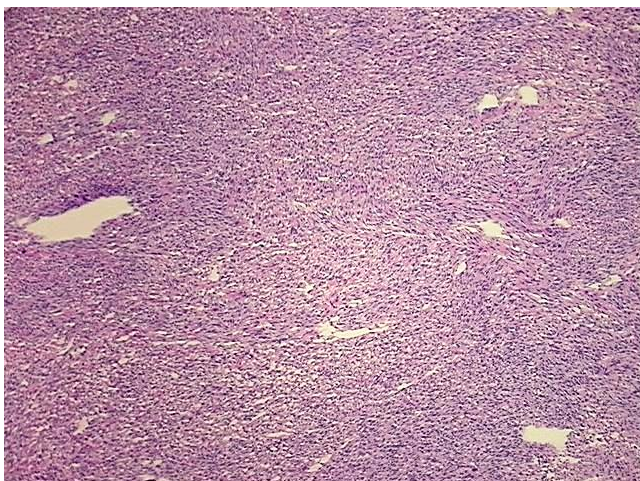
Product Type:	Total RNA
Disease State:	Cancer
Diagnosis Category:	Sarcoma
Tissue:	Soft tissue
Frozen Sample ID:	FR0001D0D7
Case ID:	CU0000005784
Prep:	1
Vial ID:	RN00003269
Tissue of Origin:	Soft tissue
Site of Finding:	Chest wall
Appearance:	Tumor
Sample Diagnosis (from Pathology Verification):	Sarcoma, synovial, monophasic
Normal:	0%
Lesional:	0%
Tumor:	99%
Tumor Hypo/Acellular Stroma:	1%
Tumor Hypercellular Stroma:	0%
Necrosis:	0%
Bioanalyzer Ratio (28S/18S):	1.35
CASE Diagnosis (from medical center path report):	Sarcoma, synovial, monophasic
Age:	28



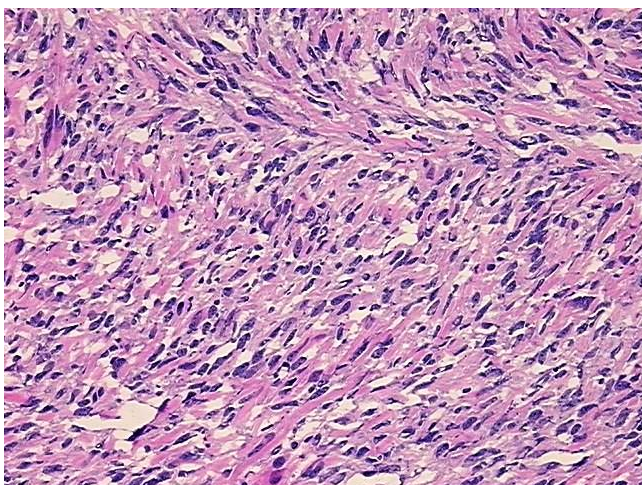
[View online »](#)

Gender:	Male
Tumor Grade:	AJCC G3: Poorly differentiated
Minimum Stage Grouping:	II
T (Extent of Primary Tumor):	TX
N (Lymph node metastasis):	NX
M (Distant metastasis):	MX
Diagnostic Test Results:	CD227 ~ MUC1 ~ EMA ~ CA15-3 ! by IHC,Negative; Cytokeratin (Pan) ~ Keratin, Pan ! by IHC,Negative; S100 protein,Negative; HMB45 melanoma antigen ~ GP100 ! by IHC,Negative; BCL2 oncoprotein ! by IHC,Positive; CD99 ~ MIC2 ! by IHC,Positive; CD34
Storage:	Store tissue total RNA at -80°C.
Stability:	These products are stable for one year from date of shipping when stored at -80°C without repeated freeze/thaws.

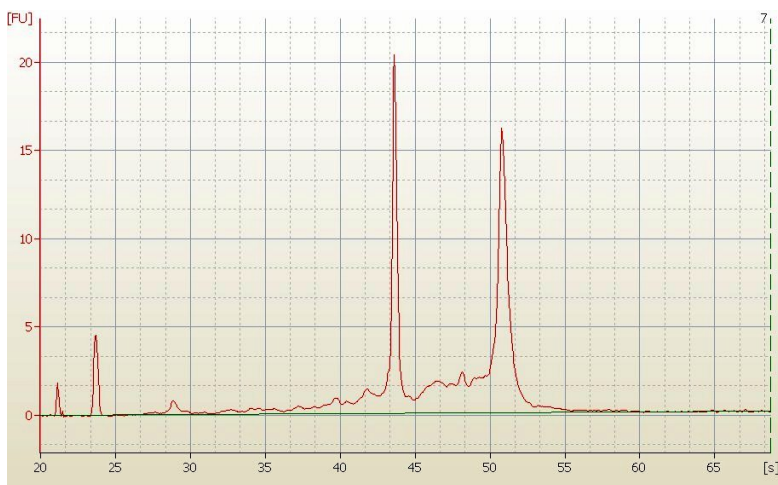
Product images:



4x Image



20x Image



RNA Electropherogram Image



RNA RT-PCR Image