

Product datasheet for **CR561393**

Tissue Total RNA, Breast

Product data:

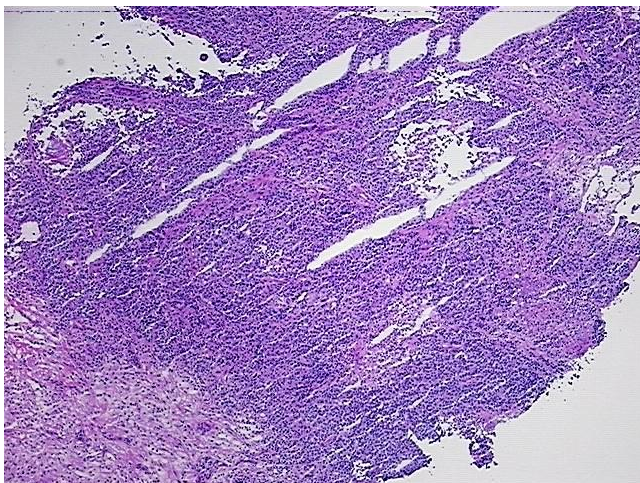
Product Type:	Total RNA
Disease State:	Cancer
Diagnosis Category:	Breast Cancer
Tissue:	Breast
Frozen Sample ID:	FR0001CECD
Case ID:	CU0000005776
Prep:	1
Vial ID:	RN000031EA
Tissue of Origin:	Breast
Site of Finding:	Breast
Appearance:	Tumor
Sample Diagnosis (from Pathology Verification):	Adenocarcinoma of breast, ductal
Normal:	20%
Lesional:	0%
Tumor:	65%
Tumor Hypo/Acellular Stroma:	8%
Tumor Hypercellular Stroma:	0%
Necrosis:	7%
Pathology Verification notes from H&E review:	5% lymphocytic infiltrate present in hypercellular stroma
Bioanalyzer Ratio (28S/18S):	1.11



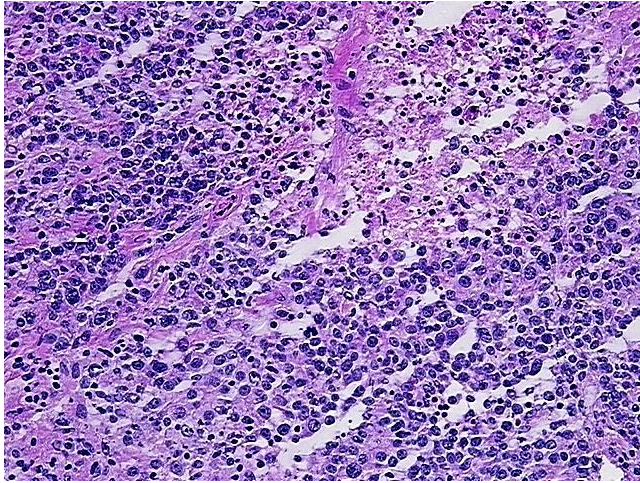
[View online »](#)

CASE Diagnosis (from medical center path report):	Adenocarcinoma of breast, ductal
Age:	41
Gender:	Female
Tumor Grade:	NSABP Grade: Nuclear 3 of 3 & Histologic 3 of 3
Minimum Stage Grouping:	I
T (Extent of Primary Tumor):	T1c
N (Lymph node metastasis):	N0
M (Distant metastasis):	MX
Diagnostic Test Results:	Progesterone receptor ~ PR ! by IHC,Positive; HER2 ~ ERBB2 ~ Neu ! by IHC,Negative
Storage:	Store tissue total RNA at -80°C.
Stability:	These products are stable for one year from date of shipping when stored at -80°C without repeated freeze/thaws.

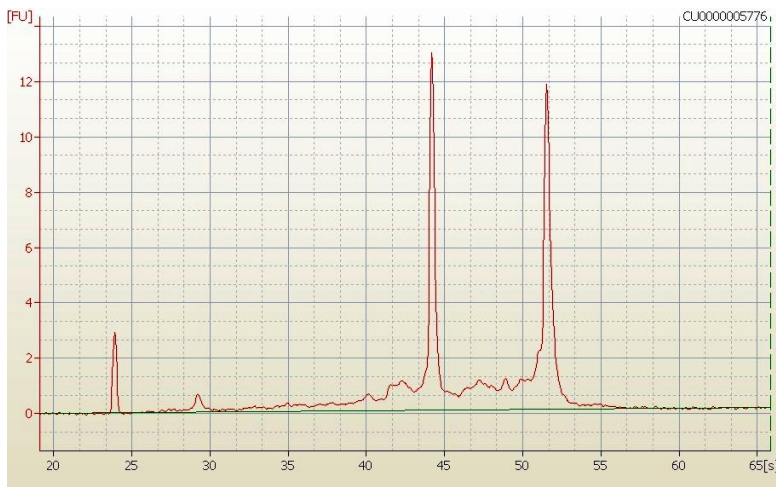
Product images:



4x Image



20x Image



RNA Electropherogram Image



RNA RT-PCR Image