

## Product datasheet for CR561389

### Tissue Total RNA, Lung

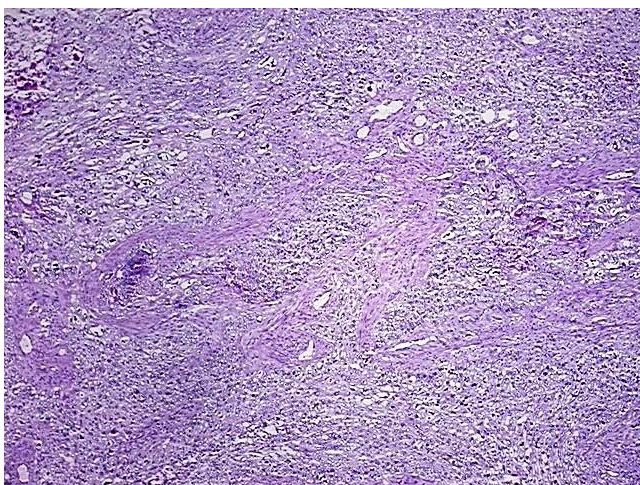
#### Product data:

Product Type:	Total RNA
Disease State:	Cancer
Diagnosis Category:	Lung Cancer
Tissue:	Lung
Frozen Sample ID:	FR00020F03
Case ID:	CU0000005967
Prep:	1
Vial ID:	RN00001334
Tissue of Origin:	Lung
Site of Finding:	Lung
Appearance:	Tumor
Sample Diagnosis (from Pathology Verification):	Carcinoma of lung, squamous cell
Normal:	0%
Lesional:	0%
Tumor:	55%
Tumor Hypo/Acellular Stroma:	40%
Tumor Hypercellular Stroma:	0%
Necrosis:	5%
Bioanalyzer Ratio (28S/18S):	1.53
CASE Diagnosis (from medical center path report):	Carcinoma of lung, squamous cell
Age:	80

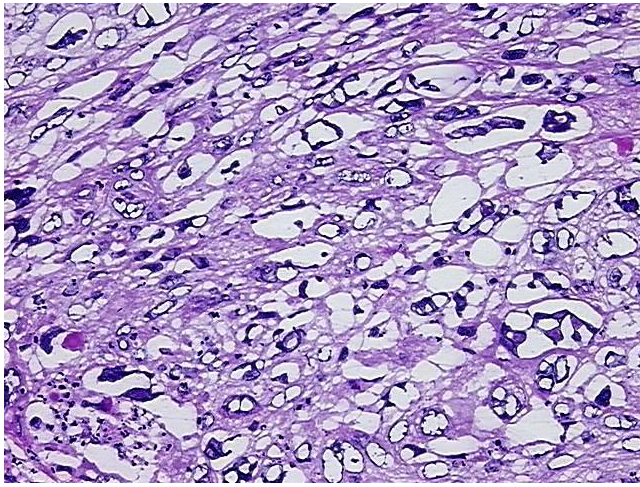


[View online »](#)

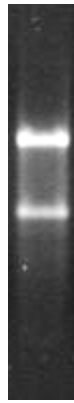
Gender:	Male
Tumor Grade:	AJCC G3: Poorly differentiated
Minimum Stage Grouping:	IIB
T (Extent of Primary Tumor):	T2
N (Lymph node metastasis):	N1
M (Distant metastasis):	MX
Storage:	Store tissue total RNA at -80°C.
Stability:	These products are stable for one year from date of shipping when stored at -80°C without repeated freeze/thaws.

**Product images:**

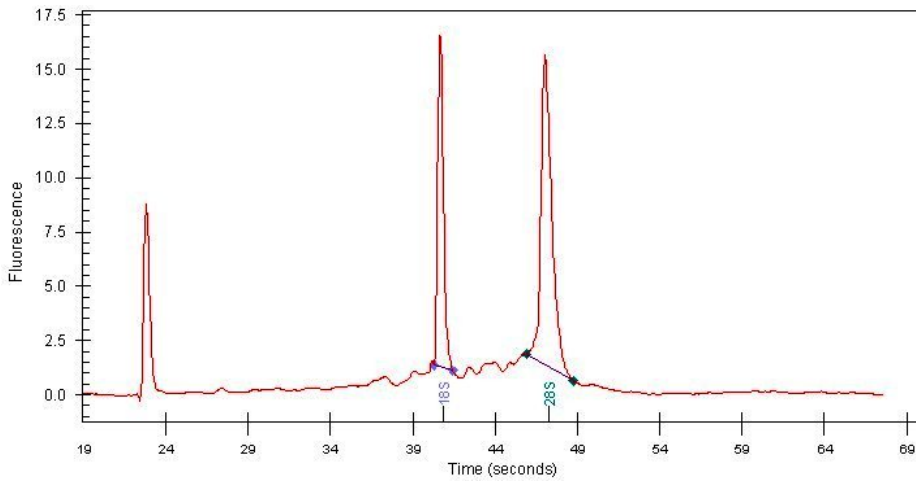
4x Image



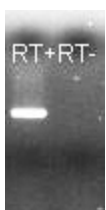
20x Image



RNA Gel Image



RNA Electropherogram Image



RNA RT-PCR Image