

## Product datasheet for CR561382

### Tissue Total RNA, Thyroid gland

#### Product data:

|   |   |
|---|---|
| Product Type:                                   | Total RNA   |
| Disease State:                                  | Cancer  |
| Diagnosis Category:                             | Thyroid Cancer                                      |
| Tissue:   | Thyroid gland                                       |
| Frozen Sample ID:                               | FR000214D5  |
| Case ID:  | CU00000005988                                       |
| Prep:   | 1   |
| Vial ID:  | RN00002C13  |
| Tissue of Origin:                               | Thyroid gland                                       |
| Site of Finding:                                | Thyroid gland                                       |
| Appearance:                                     | Tumor   |
| Sample Diagnosis (from Pathology Verification): | Carcinoma of thyroid, papillary, follicular variant |
| Normal:   | 0%  |
| Lesional:                                       | 5%  |
| Tumor:  | 90%   |
| Tumor Hypo/Acellular Stroma:                    | 0%  |
| Tumor Hypercellular Stroma:                     | 5%  |
| Necrosis:                                       | 0%  |
| Pathology Verification notes from H&E review:   | Lesion (5%): Thyroiditis, lymphocytic 100%          |
| Bioanalyzer Ratio (28S/18S):                    | 0.92  |


[View online »](#)

**CASE Diagnosis (from medical center path report):** Carcinoma of thyroid, papillary, follicular variant

**Age:** 29

**Gender:** Female

**Tumor Grade:** Not Reported

**Minimum Stage Grouping:** I

**T (Extent of Primary Tumor):** T1

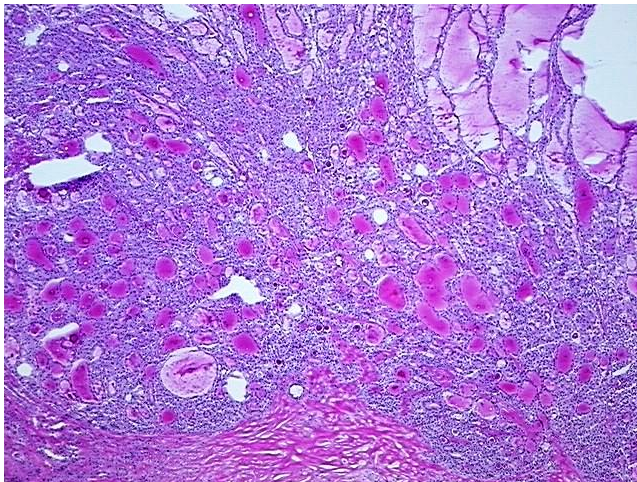
**N (Lymph node metastasis):** N0

**M (Distant metastasis):** MX

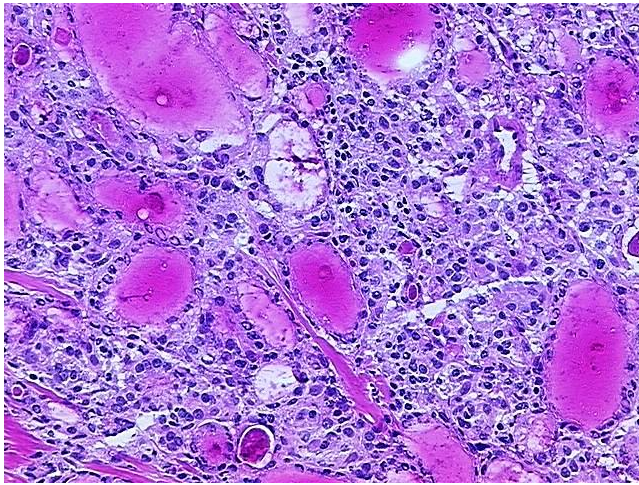
**Storage:** Store tissue total RNA at -80°C.

**Stability:** These products are stable for one year from date of shipping when stored at -80°C without repeated freeze/thaws.

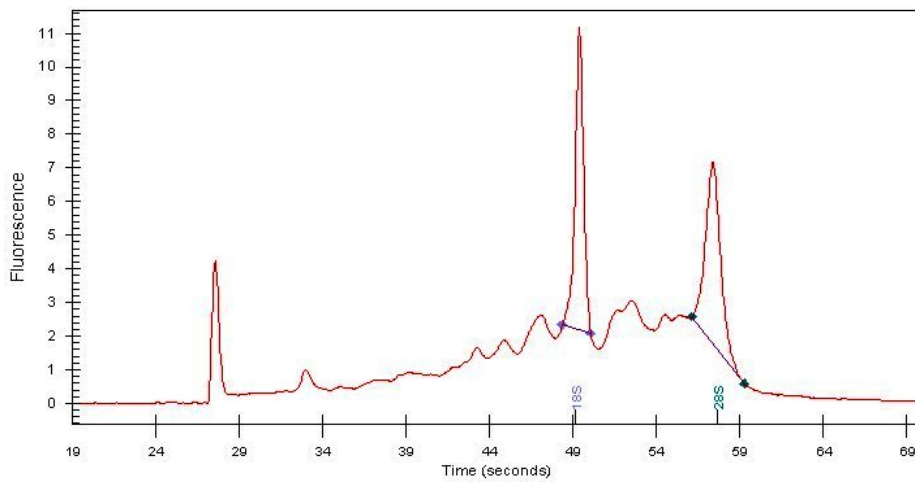
### Product images:



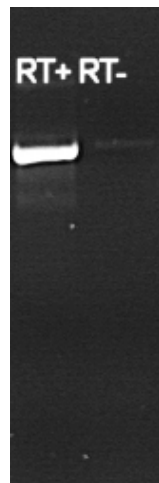
4x Image



20x Image



RNA Electropherogram Image



RNA RT-PCR Image