

Product datasheet for CR561377

Tissue Total RNA, Pancreas

Product data:

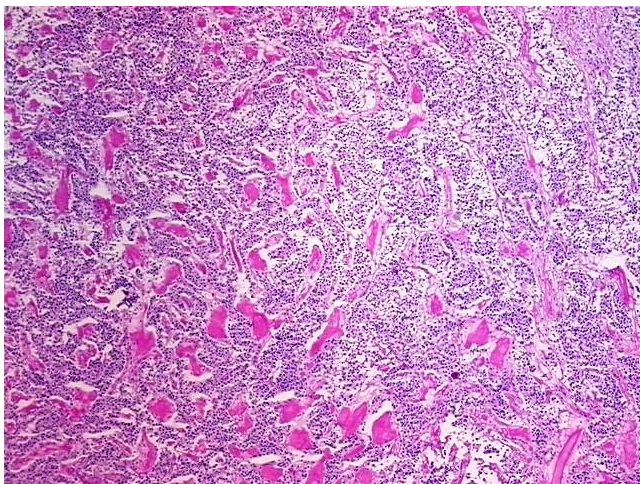
Product Type:	Total RNA
Disease State:	Cancer
Diagnosis Category:	Carcinoid/Neuroendocrine Tumors
Tissue:	Pancreas
Frozen Sample ID:	FR0002174B
Case ID:	CU0000005996
Prep:	2
Vial ID:	RN0000164A
Tissue of Origin:	Pancreas
Site of Finding:	Pancreas
Appearance:	Tumor
Sample Diagnosis (from Pathology Verification):	Tumor of pancreas, neuroendocrine
Normal:	0%
Lesional:	0%
Tumor:	75%
Tumor Hypo/Acellular Stroma:	0%
Tumor Hypercellular Stroma:	25%
Necrosis:	0%
Pathology Verification notes from H&E review:	tumor stroma: 100% fibrosis
Bioanalyzer Ratio (28S/18S):	1.29



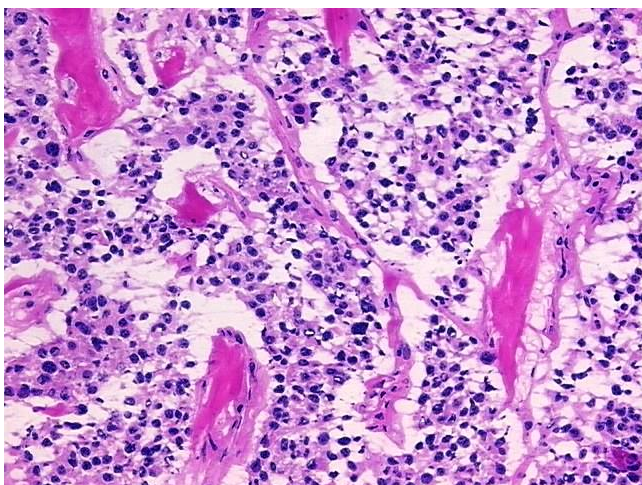
[View online »](#)

CASE Diagnosis (from medical center path report):	Tumor of pancreas, Islet cell
Age:	57
Gender:	Female
Tumor Grade:	Not Reported
Minimum Stage Grouping:	Not Reported
T (Extent of Primary Tumor):	Not Reported
N (Lymph node metastasis):	Not Reported
M (Distant metastasis):	Not Reported
Storage:	Store tissue total RNA at -80°C.
Stability:	These products are stable for one year from date of shipping when stored at -80°C without repeated freeze/thaws.

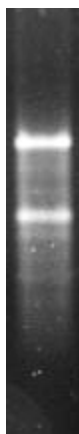
Product images:



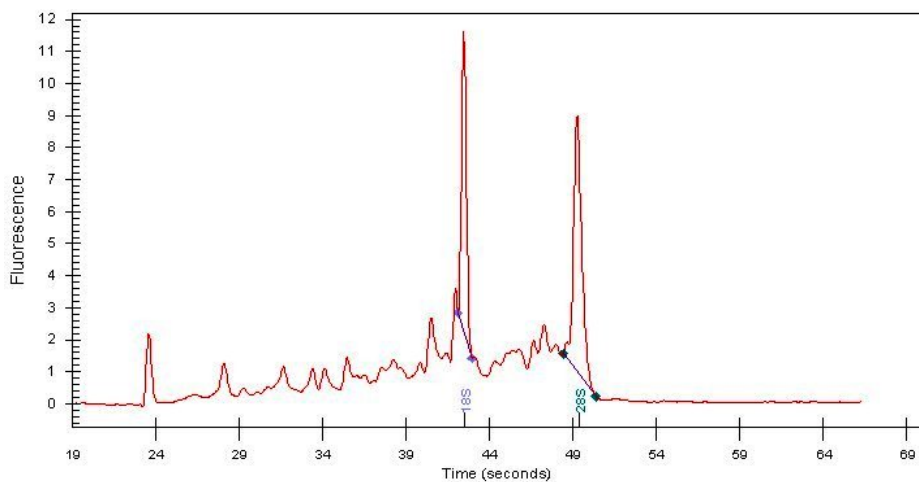
4x Image



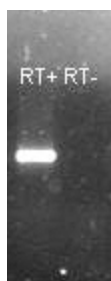
20x Image



RNA Gel Image



RNA Electropherogram Image



RNA RT-PCR Image