

Product datasheet for **CR561357**

Tissue Total RNA, Ovary

Product data:

Product Type:	Total RNA
Disease State:	Cancer
Diagnosis Category:	Ovarian Cancer
Tissue:	Ovary
Frozen Sample ID:	FR000204A9
Case ID:	CU0000005866
Prep:	1
Vial ID:	RN000033E2
Tissue of Origin:	Ovary
Site of Finding:	Omentum
Appearance:	Tumor
Sample Diagnosis (from Pathology Verification):	Adenocarcinoma of ovary, papillary serous, metastatic
Normal:	0%
Lesional:	0%
Tumor:	70%
Tumor Hypo/Acellular Stroma:	25%
Tumor Hypercellular Stroma:	0%
Necrosis:	5%
Pathology Verification notes from H&E review:	Tumor Stroma (Cellular): Desmoplastic reaction, Fibroblastic cells, Inflammatory cells
Bioanalyzer Ratio (28S/18S):	1.3



[View online »](#)

CASE Diagnosis (from medical center path report): Adenocarcinoma of ovary, papillary serous

Age: 63

Gender: Female

Tumor Grade: FIGO G3: Poorly differentiated

Minimum Stage IV

Grouping:

T (Extent of Primary Tumor): T3a

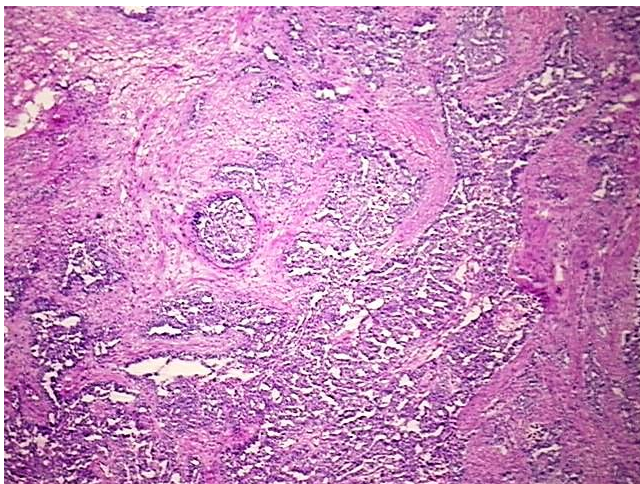
N (Lymph node metastasis): NX

M (Distant metastasis): M1

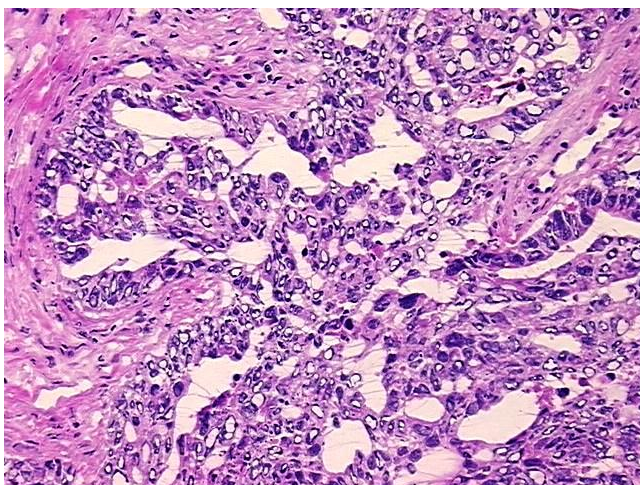
Storage: Store tissue total RNA at -80°C.

Stability: These products are stable for one year from date of shipping when stored at -80°C without repeated freeze/thaws.

Product images:



4x Image



20x Image