

Product datasheet for CR561344

Tissue Total RNA, Lung

Product data:

Product Type:	Total RNA
Disease State:	Cancer
Diagnosis Category:	Lung Cancer
Tissue:	Lung
Frozen Sample ID:	FR0001C92E
Case ID:	CU0000005921
Prep:	1
Vial ID:	RN000038C9
Tissue of Origin:	Lung
Site of Finding:	Lung
Appearance:	Tumor
Sample Diagnosis (from Pathology Verification):	Carcinoma of lung, squamous cell
Normal:	5%
Lesional:	0%
Tumor:	40%
Tumor Hypo/Acellular Stroma:	45%
Tumor Hypercellular Stroma:	0%
Necrosis:	10%
Pathology Verification notes from H&E review:	Tumor: tumor shows necrosis and degenerative changes, and has a very prominent stromal reaction
Bioanalyzer Ratio (28S/18S):	1.95



[View online »](#)

CASE Diagnosis (from medical center path report): Carcinoma of lung, squamous cell

Age: 67

Gender: Female

Tumor Grade: AJCC G3: Poorly differentiated

Minimum Stage Grouping: IIB

T (Extent of Primary Tumor): T2

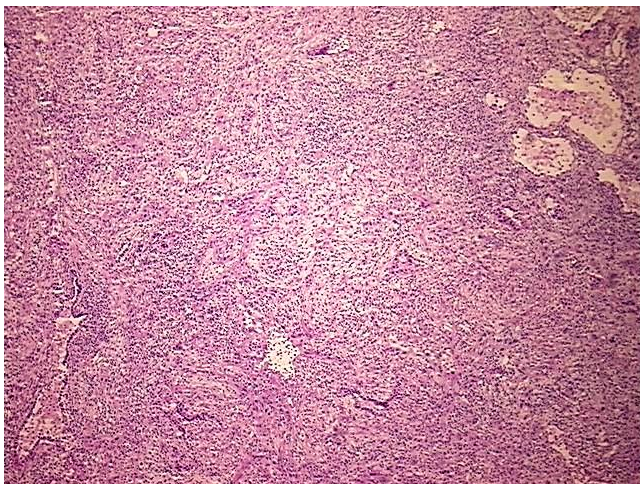
N (Lymph node metastasis): N1

M (Distant metastasis): MX

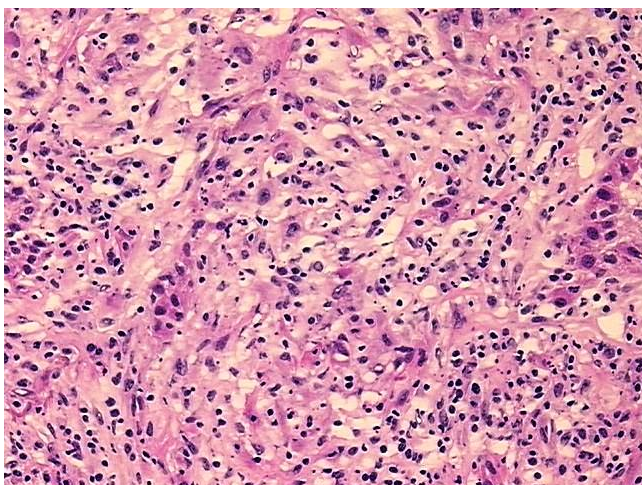
Storage: Store tissue total RNA at -80°C.

Stability: These products are stable for one year from date of shipping when stored at -80°C without repeated freeze/thaws.

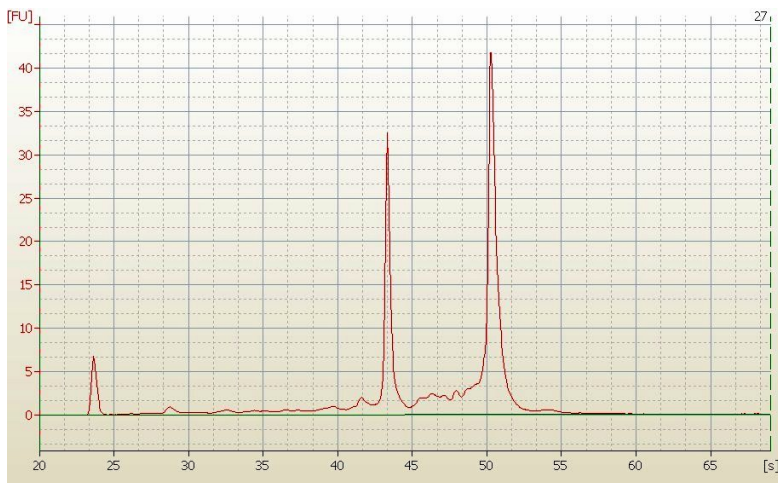
Product images:



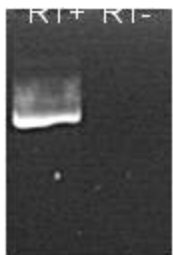
4x Image



20x Image



RNA Electropherogram Image



RNA RT-PCR Image