

Product datasheet for CR561343

Tissue Total RNA, Cervix

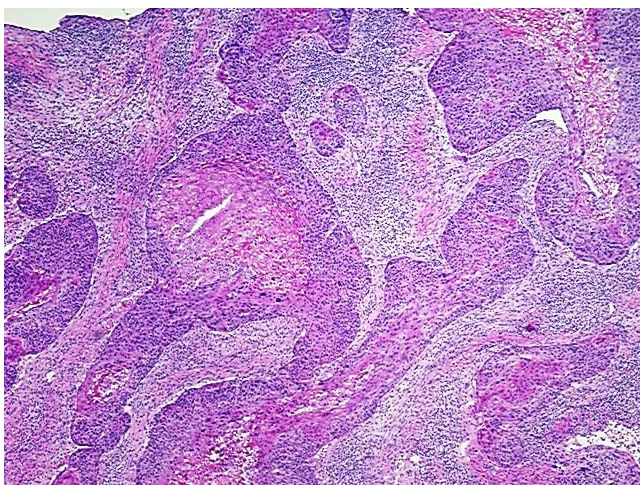
Product data:

Product Type:	Total RNA
Disease State:	Cancer
Diagnosis Category:	Cervical Cancer
Tissue:	Cervix
Frozen Sample ID:	FR0001CACC
Case ID:	CU0000005927
Prep:	1
Vial ID:	RN00000A7F
Tissue of Origin:	Cervix
Site of Finding:	Cervix
Appearance:	Tumor
Sample Diagnosis (from Pathology Verification):	Carcinoma of cervix, squamous cell
Normal:	0%
Lesional:	0%
Tumor:	60%
Tumor Hypo/Acellular Stroma:	30%
Tumor Hypercellular Stroma:	0%
Necrosis:	10%
Bioanalyzer Ratio (28S/18S):	1.21
CASE Diagnosis (from medical center path report):	Carcinoma of cervix, squamous cell
Age:	65

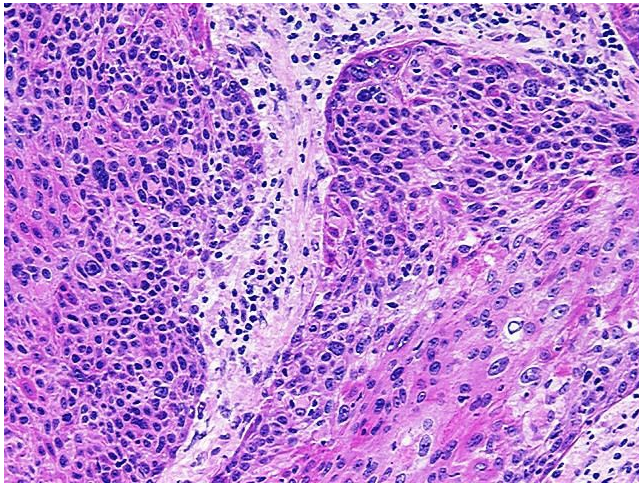


[View online »](#)

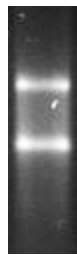
Gender:	Female
Tumor Grade:	FIGO G3: Poorly differentiated
Minimum Stage Grouping:	IVB
T (Extent of Primary Tumor):	T2b
N (Lymph node metastasis):	N0
M (Distant metastasis):	M1
Storage:	Store tissue total RNA at -80°C.
Stability:	These products are stable for one year from date of shipping when stored at -80°C without repeated freeze/thaws.

Product images:

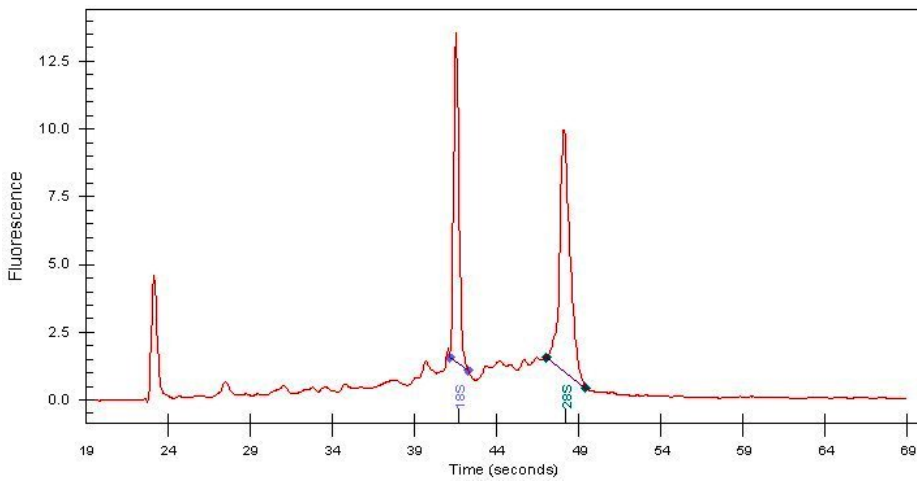
4x Image



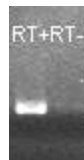
20x Image



RNA Gel Image



RNA Electropherogram Image



RNA RT-PCR Image