

## Product datasheet for CR561299

### Tissue Total RNA, Ovary: left

#### Product data:

Product Type:	Total RNA
Disease State:	Cancer
Diagnosis Category:	Ovarian Cancer
Tissue:	Ovary
Frozen Sample ID:	FR000205DC
Case ID:	CI0000007875
Prep:	1
Vial ID:	RN00002295
Tissue of Origin:	Ovary: left
Site of Finding:	Ovary: left
Appearance:	Tumor
Sample Diagnosis (from Pathology Verification):	Adenocarcinoma of ovary, papillary serous
Normal:	0%
Lesional:	0%
Tumor:	60%
Tumor Hypo/Acellular Stroma:	10%
Tumor Hypercellular Stroma:	10%
Necrosis:	20%
Pathology Verification notes from H&E review:	Tumor Stroma (Cellular): Desmoplastic reaction; Tumor Stroma (Hypo/Acellular): Fibrosis
Bioanalyzer Ratio (28S/18S):	1.61



[View online »](#)

**CASE Diagnosis (from medical center path report):** Adenocarcinoma of ovary, papillary serous

**Age:** 58

**Gender:** Female

**Race:** White or Caucasian

**Tumor Grade:** FIGO G2: Moderately differentiated

**Minimum Stage Grouping:** IIIC

**T (Extent of Primary Tumor):** T3c

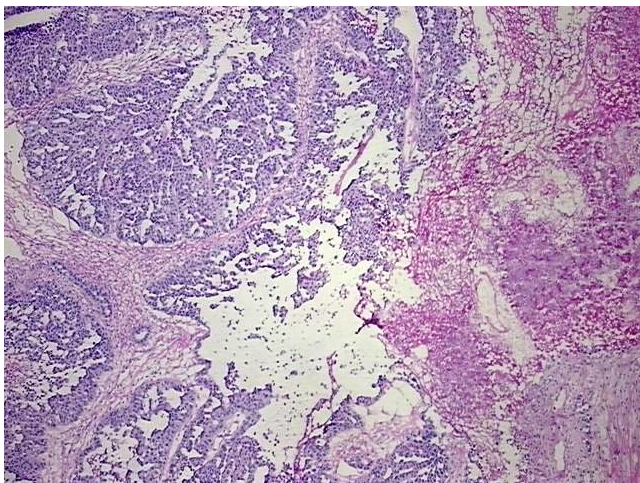
**N (Lymph node metastasis):** NX

**M (Distant metastasis):** MX

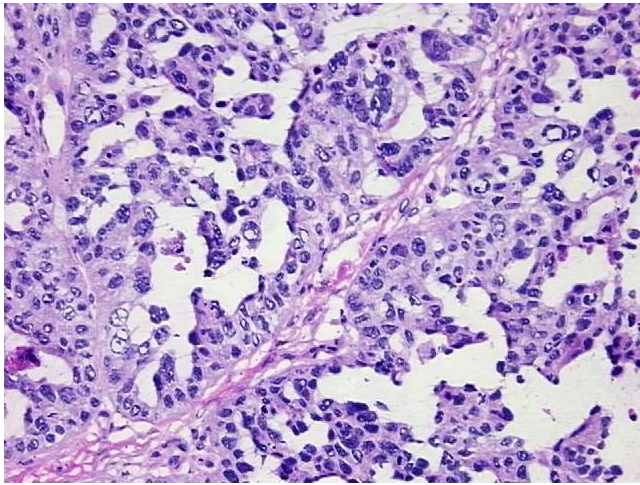
**Storage:** Store tissue total RNA at -80°C.

**Stability:** These products are stable for one year from date of shipping when stored at -80°C without repeated freeze/thaws.

### Product images:



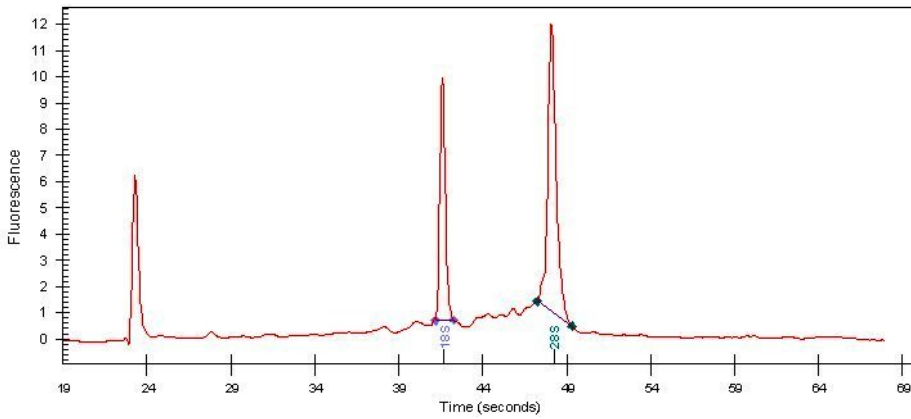
4x Image



20x Image



RNA Gel Image



RNA Electropherogram Image



RNA RT-PCR Image