

## Product datasheet for CR561294

### Tissue Total RNA, Pleura

#### Product data:

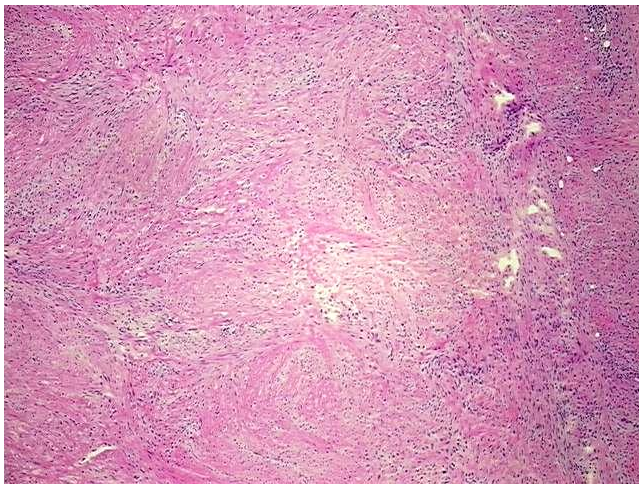
Product Type:	Total RNA
Disease State:	Cancer
Diagnosis Category:	Mesothelioma
Tissue:	Pleura
Frozen Sample ID:	FR0002081B
Case ID:	CI0000007889
Prep:	1
Vial ID:	RN00001FOA
Tissue of Origin:	Pleura
Site of Finding:	Lung
Appearance:	Tumor
Sample Diagnosis (from Pathology Verification):	Mesothelioma of pleura
Normal:	0%
Lesional:	0%
Tumor:	80%
Tumor Hypo/Acellular Stroma:	0%
Tumor Hypercellular Stroma:	20%
Necrosis:	0%
Pathology Verification notes from H&E review:	Tumor Stroma (Hypo/Acellular): Fibrosis; Other Features/Comments: Pleural mesothelioma with extension along interlobular septa
Bioanalyzer Ratio (28S/18S):	1.47



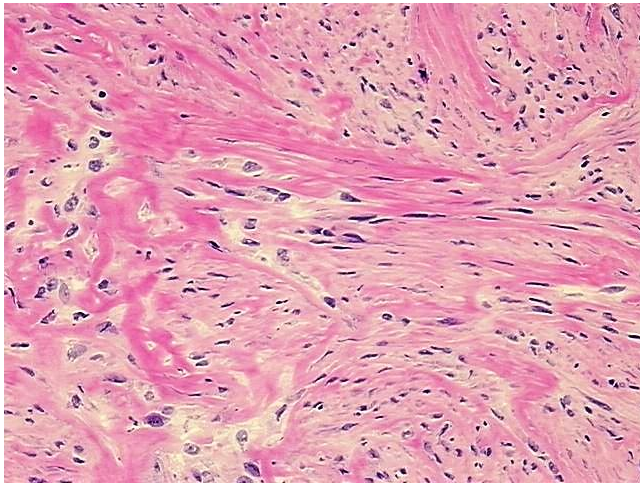
[View online »](#)

CASE Diagnosis (from medical center path report):	Mesothelioma of pleura
Age:	53
Gender:	Male
Race:	White or Caucasian
Tumor Grade:	Not Reported
Minimum Stage Grouping:	IV
T (Extent of Primary Tumor):	T3
N (Lymph node metastasis):	N1
M (Distant metastasis):	M1
Diagnostic Test Results:	Cytokeratins (5 and 6) ~ CK5,6 ! by IHC,Reported as Performed or Reviewed; Epithelial specific antigen ~ BerEP4 ~ MOC31 ! by IHC,Reported as Performed or Reviewed; CD66e ~ CEACAM5 ! by IHC,Reported as Performed or Reviewed; Tumor associated glycop
Storage:	Store tissue total RNA at -80°C.
Stability:	These products are stable for one year from date of shipping when stored at -80°C without repeated freeze/thaws.

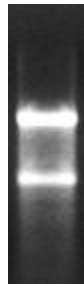
### Product images:



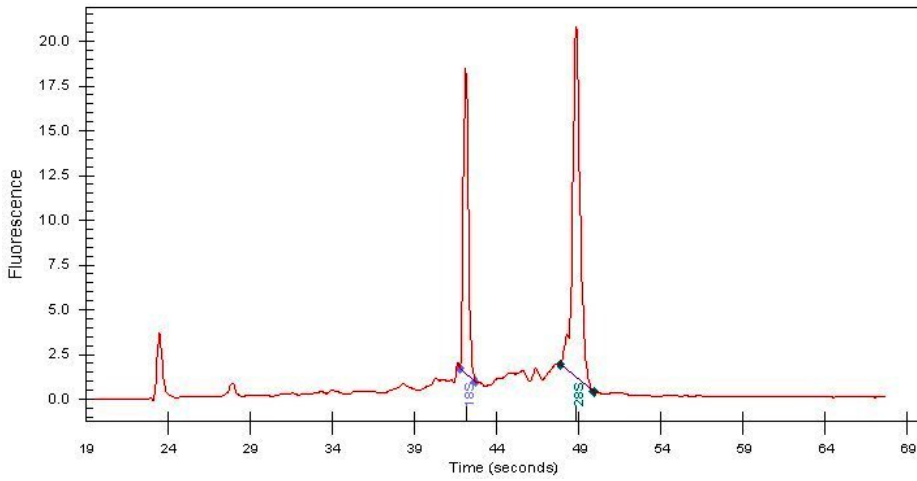
4x Image



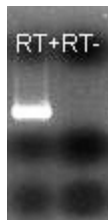
20x Image



RNA Gel Image



RNA Electropherogram Image



RNA RT-PCR Image