

## Product datasheet for CR561281

### Tissue Total RNA, Pancreas

#### Product data:

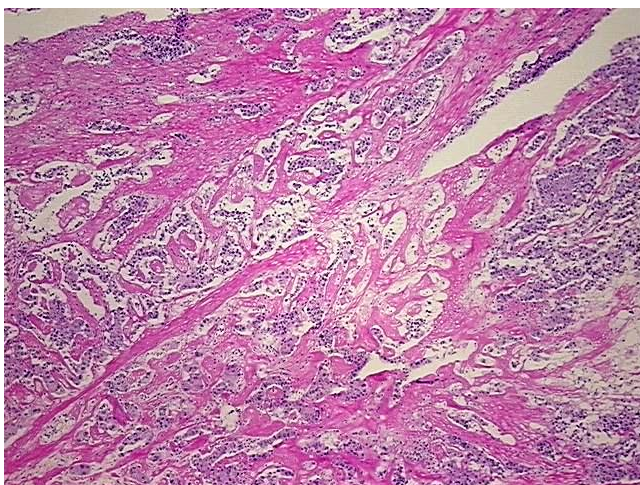
Product Type:	Total RNA
Disease State:	Cancer
Diagnosis Category:	Carcinoid/Neuroendocrine Tumors
Tissue:	Pancreas
Frozen Sample ID:	FR000207C4
Case ID:	CI0000008064
Prep:	1
Vial ID:	RN00000DEC
Tissue of Origin:	Pancreas
Site of Finding:	Pancreas
Appearance:	Tumor
Sample Diagnosis (from Pathology Verification):	Tumor of pancreas, neuroendocrine
Normal:	0%
Lesional:	0%
Tumor:	70%
Tumor Hypo/Acellular Stroma:	10%
Tumor Hypercellular Stroma:	20%
Necrosis:	0%
Pathology Verification notes from H&E review:	tumor contains 20% acellular stroma with hyalinization consistent with post-chemotherapy effect
Bioanalyzer Ratio (28S/18S):	1.07



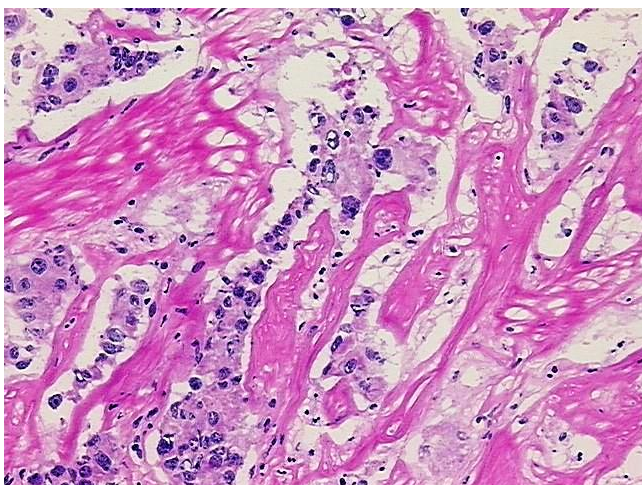
[View online »](#)

CASE Diagnosis (from medical center path report):	Tumor of pancreas, Islet cell
Age:	51
Gender:	Male
Race:	Black or African American
Tumor Grade:	Not Reported
Minimum Stage Grouping:	Not Reported
T (Extent of Primary Tumor):	Not Reported
N (Lymph node metastasis):	Not Reported
M (Distant metastasis):	Not Reported
Diagnostic Test Results:	Congo red,Negative; Cytokeratin (Pan) ~ Keratin, Pan ! by IHC,Positive; Synaptophysin ~ SYN ! by IHC,Positive; Somatostatin ~ SOMA,Negative; Glucagon ! by IHC,Negative; Insulin ! by IHC,Negative; Chromogranin A ~ Parathyroid secretory protein 1 !
Storage:	Store tissue total RNA at -80°C.
Stability:	These products are stable for one year from date of shipping when stored at -80°C without repeated freeze/thaws.

### Product images:



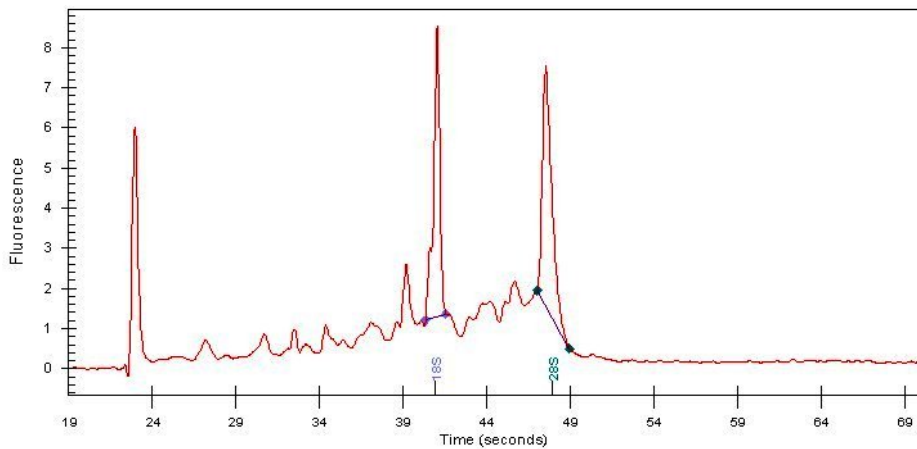
4x Image



20x Image



RNA Gel Image



RNA Electropherogram Image



RNA RT-PCR Image