

## Product datasheet for CR561258

### Tissue Total RNA, Soft tissue

#### Product data:

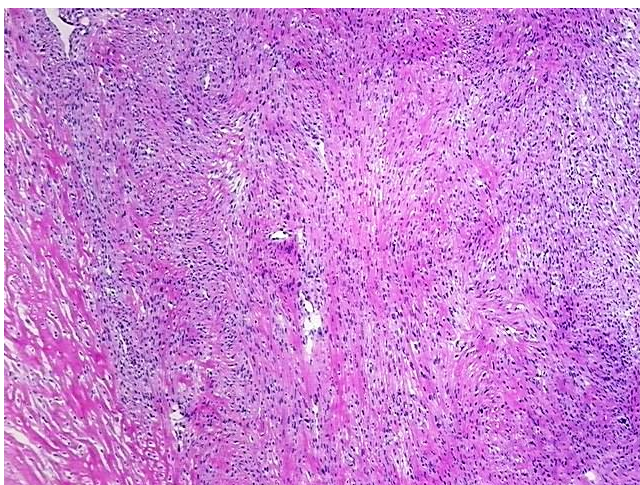
Product Type:	Total RNA
Disease State:	Cancer
Diagnosis Category:	Sarcoma
Tissue:	Soft tissue
Frozen Sample ID:	FR00020325
Case ID:	CI0000007960
Prep:	1
Vial ID:	RN00003B81
Tissue of Origin:	Soft tissue
Site of Finding:	Buttock
Appearance:	Tumor
Sample Diagnosis (from Pathology Verification):	Histiocytoma, malignant fibrous
Normal:	0%
Lesional:	0%
Tumor:	55%
Tumor Hypo/Acellular Stroma:	0%
Tumor Hypercellular Stroma:	45%
Necrosis:	0%
Pathology Verification notes from H&E review:	Tumor Stroma (Hypo/Acellular): Fibrosis
Bioanalyzer Ratio (28S/18S):	1.48



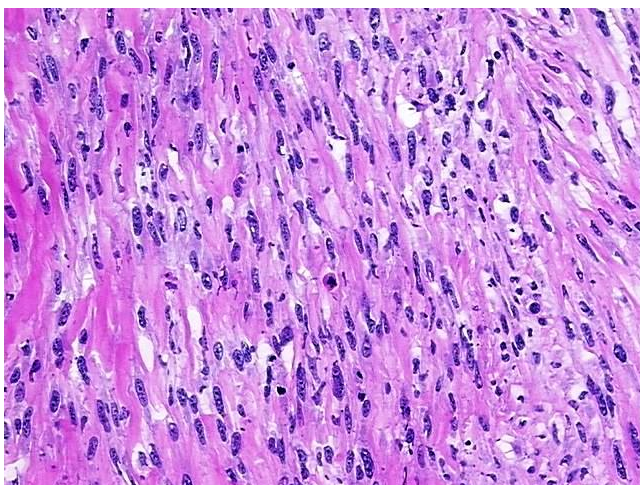
[View online »](#)

<b>CASE Diagnosis (from medical center path report):</b>	Histiocytoma, malignant fibrous
<b>Age:</b>	58
<b>Gender:</b>	Female
<b>Race:</b>	Black or African American
<b>Tumor Grade:</b>	AJCC G3: Poorly differentiated
<b>Minimum Stage Grouping:</b>	II
<b>T (Extent of Primary Tumor):</b>	T2a
<b>N (Lymph node metastasis):</b>	NX
<b>M (Distant metastasis):</b>	MX
<b>Diagnostic Test Results:</b>	CD227 ~ MUC1 ~ EMA ~ CA15-3 ! by IHC,Negative; Cytokeratin (Pan) ~ Keratin, Pan ! by IHC,Negative; Vimentin ~ VIM ! by IHC,Positive; S100 protein,Positive, focal; CD99 ~ MIC2 ! by IHC,Negative; CD31 ~ PECAM1 ! by IHC,Negative; CD68 ~ KP1 !
<b>Storage:</b>	Store tissue total RNA at -80°C.
<b>Stability:</b>	These products are stable for one year from date of shipping when stored at -80°C without repeated freeze/thaws.

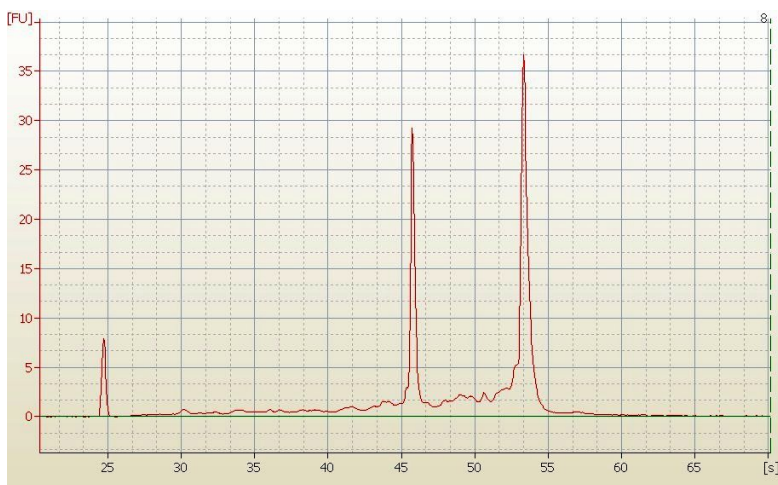
### Product images:



4x Image



20x Image



RNA Electropherogram Image



RNA RT-PCR Image